



### UNI-T Installation Testers

3 YEAR WARRANTY

**UNI-T**

#### Compliance Tester - Multi Functional

**UT593**

AC Voltage: 440V  
Insulation Test: 250/500/1000V  
Prospective Short Circuit: 26kA  
RCD Test Current: 10/30/  
100/300/500mA  
Phase Rotation Test  
Low Ohm Measurement  
Loop Impedance  
ELCB Test (Time & Sensitivity)  
APO



**R10 829.00**  
R9416.52 EXCL VAT

#### PV Insulation Tester

**UT503PV**

Insulation Test Voltage: 125V / 250V /  
500V / 1000V  
DC Voltage:  
5 ~1000V  
AC Voltage:  
5 ~600V  
Continuous  
Measurement  
Compare Function  
Time Measurement



**R8389.00**  
R7294.78 EXCL VAT

#### 2000Ω Earth Ground Tester

**UT521**

Earth Resistance Testing (2/3 Wire)  
Range: 0 ~ 2000Ω  
AC Earth Voltage (V) 0 ~ 200V  
Frequency (Hz):  
50Hz/60Hz  
Data Storage: 20  
Manual Range  
LCD Backlight  
Double Insulation  
Protection  
Poor Contact Display



**R4139.00**  
R3599.13 EXCL VAT

#### Socket Tester

**THR-ELT**

AC Voltage: 230V CATII 300V  
Correct Light Indication  
Live Neutral Reverse Indication  
Live Earth Reverse Indication  
No Neutral Indication  
No Earth Indication  
No Live Indication  
ELCB Trip Test: 10-35mA



**R419.00**  
R364.35 EXCL VAT

#### 1kV Insulation Tester

**UT501A**

Insulation Test Voltage:  
100V/250V/500V/1000V  
Short Circuit Current: < 2mA  
AC Voltage: 750V  
Auto Ranging  
LCD Backlight  
Alarm Buzzer



**R1679.00**  
R1460 EXCL VAT

#### Single Phase Digital RCD (ELCB) Tester

**UT582+**

RCD Measurement: 10mA ~ 500mA  
Operating Voltage: 195V ~ 253V  
Voltage Range: 600VAC  
Phase Switch: 0° and 180°  
Lead Sequence Check  
AUTO RAMP  
Disconnect buzzer  
Mis-Operation Buzzer  
Over-range Display  
Data Hold



**R3199.00**  
R2781.74 EXCL VAT

### Tester Accessories

#### Alligator Clips

**UT-C02A**

Through Hole Alligator Clip  
Length: 80mm  
Clip Opening: 36mm



**R209.00**  
R181.74 EXCL VAT

#### Hook Type Test Clamp

**UT-C01**

Rod Length: 62mm  
Hook can Extend to 7.5mm  
Safety Handle and Spring Hook



**R99.00**  
R86.09 EXCL VAT

#### Double Insulated Test Leads

**UT-L27**

Cable Length: 900mm  
Rod Length: 130mm  
Tip Length: 16.3mm Threaded  
Removeable Tip Shield  
Double Insulation  
UL Authenticated Material



**R149.00**  
R129.57 EXCL VAT

#### Thermocouple

**UT-T01**

Accuracy: ±0.75%  
Test Range: -40°C ~ 260°C  
Teflon Covered Insulation  
Through Hole Input  
Used for General Temperature  
Measurement  
NOT for Liquid Measurement



**R79.00**  
R68.70 EXCL VAT

#### Automotive Battery Tester

**UT675A**

12V Battery Test: 7 ~ 16V DC  
12V/24V Cranking System  
Test: 7 ~ 30V DC  
12V/24V Charging  
system test: 7 ~ 30V DC  
Battery Type: Lead Acid,  
Gel, AGM, Flooded  
Battery Capacity: 3 ~ 250Ah  
USB & Printing Function



**R2589.00**  
R2251.30 EXCL VAT

#### Network Cable Tester

**UT681L**

Cable Tester for RJ45/RJ11  
Fast-speed Test Mode  
Slow-speed Test Mode  
Test for Short Circuit,  
Crossover, Open Circuit etc  
Ethernet Cable -  
Shielded / Unshielded  
Manual / Auto Power Off  
Single Key Operation



**R249.00**  
R216.52 EXCL VAT

# RE-AMP

## UNI-T Voltage Testers

Dual Mode AC Voltage Detector **PRO**

**UT12E**

High (90 - 1000VAC) and Low (24 - 1000VAC) Voltage Modes  
Non Contact Voltage  
Audible/Visual Alarm  
Flashlight  
Vibration Mode

**R299.00**

**R260.00 EXCL VAT**

**IP67**



Dual Mode AC Voltage Detector **PRO**

**UT12M**

High (90 - 1000VAC) and Low (24 - 1000VAC) Voltage Modes  
Non Contact Voltage  
Audible/Visual Alarm  
Flashlight  
Vibration Mode  
Magnetic Solenoid Detection

**R349.00**

**R303.00 EXCL VAT**

**IP67**



**3 YEAR WARRANTY**

**UNI-T**

Waterproof Voltage Tester

**UT15C**

LED AC/DC Voltage Indication (V) 12V ~ 690V  
LCD AC/DC Voltage Display (V) 24V ~ 690V  
Phase Rotation Test  
Single Lead (L2) Voltage Detection  
Continuity Test: Resistance 0~400kΩ,  
Beeper LED Light Indicator  
Polarity Detection  
IP65 Waterproof

**R909.00**

**R790.43 EXCL VAT**

**IP65**



## UNI-T MultiMeters

Palm Size Multimeter

**UT33B+**

AC/DC Voltage: 600 V  
DC Current: 10A  
Resistance: 20MΩ  
Battery Test: 1.5V/9V/12V  
APO  
Diode / Continuity Test  
2m Drop Test

**R299.00**

**R260.00 EXCL VAT**



Pocket Size Multimeter

**UT125C**

AC/DC Voltage: 600V  
DC Current: 400mA  
Resistance: 40MΩ  
Frequency: 60kHz  
Capacitance: 100μF  
Diode / Continuity Test  
Non Contact Voltage Test

**R549.00**

**R477.39 EXCL VAT**



TRMS Digital Multimeter

**UT60EU**

AC/DC Voltage: 999.9 V  
AC/DC Current: 10A  
Resistance: 99.99MΩ  
Frequency: 99.99Hz ~ 9.999MHz  
Capacitance: 99.9mF  
Duty Cycle: 0.1~99.9%  
Temperature: -40°C ~ 1000°C  
Backlit Display  
Auto Ranging  
Relative Measurement  
NCV / Diode / Continuity Test

**R889.00**

**R773.04 EXCL VAT**



2000V AC/DC High Voltage Digital Multimeter

**UT892**

AC/DC Voltage: 2000 V  
Variable Frequency Voltage: 600V  
Resistance: 60MΩ  
Frequency: 10Hz ~ 10kHz  
Capacitance: 60mF  
Auto / Manual Ranging  
Live Test (Single Lead)  
MAX/MIN

Diode / Continuity Test  
Relative Mode  
NCV Testing  
Data Hold  
Low Battery Indication  
Auto Power Off  
Accurate Measurement on  
VFD's & Inverters



**R899.00**

**R781.74 EXCL VAT**



## UNI-T Clamp Meters

400A TRMS Clamp Meter -  
28mm Jaw

**UT201+**

AC Current: 400A  
AC/DC Voltage: 600V  
Resistance 40MΩ  
NCV / MAX / MIN  
Diode / Continuity Test

**R619.00**

**R538.26 EXCL VAT**



400A TRMS Clamp Meter -  
28mm Jaw

**UT202+**

AC Current: 400A  
AC/DC Voltage: 600V  
Resistance 40MΩ  
Capacitance: 4000μF  
Temperature: -40°C ~ 1000°C  
NCV / MAX / MIN  
Relative Mode

**R939.00**

**R816.52 EXCL VAT**



1000A TRMS Clamp Meter -  
33mm Jaw

**2117R**

AC Current: 1000A  
AC/DC Voltage: 1000V  
Resistance: 60MΩ  
Capacitance: 6mF  
Frequency: 10kHz  
Auto Range / NCV  
LCD Backlight

**R1109.00**

**R964.35 EXCL VAT**



1000A TRMS Clamp Meter -  
45mm Jaw

**UT206A+**

AC Current: 1000A (600A Inrush)  
AC/DC Voltage: 1000V  
Resistance: 60MΩ  
Capacitance: 60mF  
Frequency: 10MHz  
Temperature: -40°C ~ 1000°C  
Duty Cycle / MAX / MIN / NCV

**R1329.00**

**R1155.65 EXCL VAT**



1000A TRMS Clamp Meter -  
42mm Jaw

**UT206B**

AC Current: 1000A  
AC/DC Voltage: 1000V  
Resistance: 60MΩ  
Capacitance: 60mF  
Frequency: 10Hz ~ 1MHz  
Temperature: -40°C ~ 1000°C  
LOZ Mode / Low Pass Filter

**R2299.00**

**R1999.13 EXCL VAT**



600A TRMS Clamp Meter -  
30mm Jaw

**UT216C**

AC/DC Current: 600A  
AC Voltage: 750V  
DC Voltage: 1000V  
Resistance: 60MΩ  
Capacitance: 60mF  
Frequency: 1MHz  
V.F.C Mode / NCV / Flash Light

**R2679.00**

**R2329.57 EXCL VAT**





### UNI-T Instruments

3 YEAR WARRANTY

UNI-T

#### 1CH Linear Power Supply

##### UTP3315TFL-II

Output Voltage: 0-30V  
Output Current: 0-5A  
Output Power: 150W  
Display Mode: LED Voltage and Current Dual Display  
Resolution: 10mV/1mA



**R2589.00**  
R2251.30 EXCL VAT

#### Dual-Channel Digital Storage Oscilloscope

##### UTD2052CL+

Channels: 2 (Analogue) | Sample rate: 500MS/s  
Memory Depth: 64kpts  
Trigger Modes: Edge, Pulse, Alternate  
Bandwidth: 50MHz  
Waveform Capture Rate: 5000wfms/s  
Auto Strategy  
XY Mode / Zoom Function  
Math Function



**R7909.00**  
R6877.39 EXCL VAT

#### Borescope

##### UT665

Resolution: 640 x 480 Pixels  
Field of View: 60°  
Adjustable Image Saturation & Illumination  
Focal Length: 20mm ~ 100mm  
4 LED Lights  
Probe Length: 1m



**R2229.00**  
R1938.26 EXCL VAT

### UNI-T Measurement Tools

#### Wall Scanner

##### UT387D

Detects Wooden Beams, Metal Objects, Electrical Wire  
Metals Scan Depth: 100mm - Iron Pipe  
80mm - Brass Pipe  
Stud-scan Depth (Wood): 38mm  
AC Electric Wire Depth: 50mm



**R1269.00**  
R1103.48 EXCL VAT

#### Laser Distance Meter

##### LM100A

Range: 100m (MAX)  
Measurement Units: m/ft/in  
Min. Display Unit: 0.001m  
Measurement Basis: Front/Rear  
Single / Continuous Measurement  
MAX/MIN/AVG  
Pythagoras Function  
Add/Subtract Function



**R1019.00**  
R886.09 EXCL VAT

#### Angle Meter

##### LM320F

Measurement Range: 4 x 90°  
Accuracy: +/- 0.2°  
Laser Indication: 3 Lines  
Magnet Base: Four-side Magnets  
Relative / Absolute Measurement  
Rechargeable Lithium Battery  
Angle Hold Function



**R979.00**  
R851.30 EXCL VAT

#### Mini Sound Level Meter

##### UT353BT

Range: 30dB ~ 130dB  
Accuracy: +/- 1.5dB  
Frequency Response: 31.5Hz ~ 8kHz  
Fast / Slow Sampling  
Data Hold/MAX/MIN  
Bluetooth Transfer of Data to iENV Smart Phone App



**R649.00**  
R564.35 EXCL VAT

#### Mini Anemometer

##### UT383BT

Wind Speed: 0 ~ 30m/s  
Temperature Range: -10°C ~ 50°C  
Wind Speed Resolution 0.1m/s  
Temperature Resolution 0.1°C  
Bluetooth Transfer of Data to iENV Smart Phone App  
Data Hold/MAX/AVG



**R639.00**  
R555.65 EXCL VAT

#### Mini Light Meter

##### UT363BT

Illuminance Measurement (Lux): 0 ~ 199,900 Lux  
Sampling Rate: 0.5/s  
Data Hold/MAX/MIN  
Bluetooth Transfer of Data to iENV Smart Phone App



**R599.00**  
R520.87 EXCL VAT

#### Infrared Thermometer

##### UT306S

Single Laser  
Temperature: -50°C ~ 500°C  
Emissivity: 0.1 ~ 1.0 Adjustable  
°C/°F Selection  
High/Low Temperature Alarm  
MAX/MIN/AVG/DIF Modes



**R309.00**  
R268.70 EXCL VAT

#### Pinless Moisture Meter

##### UT377C

Non Damaging Test of Wood and Building Material  
Measurement: 4 - 99% (Dependant on Material)  
Temperature Measurement: 20°C - 70°C  
Simulation Bar Indicator  
Audible Alarm Indication  
Flashlight



**R959.00**  
R833.91 EXCL VAT

#### Mini Non-Contact Tachometer

##### UT373

RPM Range: 10 ~ 9999RPM  
Rotation Counting: 0 - 99999  
Laser-on Indication  
Data Hold/MAX/MIN/APO



**R539.00**  
R468.70 EXCL VAT

# FOLLOW US ON SOCIAL MEDIA



FACEBOOK



LINKEDIN



# STRAP DOWN TO STRAP IN & WIN a trip to ITALY

## HOW TO ENTER:



## WIN:

### STEP 1:

Buy Any SapiSelco Product

### STEP 2:

Take a photo of your invoice

### STEP 3:

Scan the QR code or go to [www.three-d.co.za](http://www.three-d.co.za)

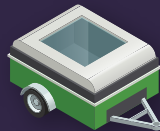
### STEP 4:

Upload your details and picture of invoice to enter



A TRIP TO ITALY

### A TRAILER



A CONTRACTORS KIT



## SCAN TO ENTER



T&C's Apply

JOHANNESBURG

Tel: +27 11 392 3804

DURBAN

Tel: +27 31 263 7800

CAPE TOWN

Tel: +27 21 552 5242

[sales@three-d.co.za](mailto:sales@three-d.co.za) | [www.three-d.co.za](http://www.three-d.co.za) | Valid 01 Jul - 30 Sep 2026 or while stocks last. E & OE

