

INDEX

<i>Cable and Wire Cutters - Hand held</i>	2
<i>Conduit and Duct (Trunking) Cutters</i>	5
<i>Cable Ties Tensioning Tools</i>	6
<i>Wire Strippers</i>	7
<i>Weicon</i>	9
<i>Crimping Tools - Pre-Insulated Terminals</i>	13
<i>Crimping Tools - Bootlace Ferrules (End sleeves)</i>	15
<i>Crimping Tools - Brass Terminals</i>	17
<i>Crimping Tools - Copper Lugs and Ferrules</i>	18
<i>Crimping Tools - Coaxial Connectors</i>	21
<i>Crimping Tools - Modular Connectors</i>	21
<i>Crimping Tools - Molex Terminals</i>	22
<i>Crimping Tools - Deutsch Terminals</i>	22
<i>Hydraulic Tools - Cutters</i>	23
<i>Hydraulic Tools - Crimping - Copper Lugs and Ferrules</i>	25
<i>Hydraulic Tools - Hole Punch Drivers</i>	27
<i>Hydraulic Tools - Foot pumps</i>	28
<i>Battery Operated Tools - Crimping - Copper Lugs and Ferrules</i>	28
<i>Battery Operated Tools - Cable Cutters</i>	30
<i>Stanley Power Tools</i>	31
<i>Dewalt Power Tools</i>	35
<i>Black and Decker Power Tools</i>	38
<i>Stanley Hand Tools</i>	45
<i>Stanley FATMAX Hand Tools</i>	62
<i>Ross Hand Tools</i>	66
<i>Cable Knives</i>	74
<i>MaxTorque Screwdrivers</i>	75
<i>MaxTorque Supreme Screwdrivers</i>	76
<i>MaxTorque Supreme Torches</i>	78
<i>Miscellaneous</i>	80

LK-22A - Cable and wire cutter for CU/AL

Cutting Range:	Up to 25mm ²
Length:	160mm
Max Diameter:	15mm
Weight:	0.19kg

Notes:

- Not Suitable for cutting steel wire, armoured cable and steel rope

LK-38A - Cable and wire cutter for CU/AL

Cutting Range:	Up to 35mm ²
Length:	190mm
Max Diameter:	7mm
Weight:	0.3kg

Notes:

- Not Suitable for cutting steel wire, armoured cable and steel rope

LK-60A - Cable and wire cutter for CU/AL

Cutting Range:	Up to 60mm ²
Length:	210mm
Max Diameter:	20mm
Weight:	0.4kg

Notes:

- Not Suitable for cutting steel wire, armoured cable and steel rope

HS-50A - Cable and wire cutter for CU/AL

Cutting Range:	Up to 35mm ²
Length:	200mm
Max Diameter:	11mm
Weight:	0.1kg

Notes:

- Not Suitable for cutting steel wire, armoured cable and steel rope

VK-60 - Cable and wire cutter for CU/AL

Cutting Range:	Up to 60mm ²
Length:	200mm
Max Diameter:	20mm
Weight:	0.3kg

Notes:

- Not Suitable for cutting steel wire, armoured cable and steel rope

HS-95A - Cable and wire cutter for CU/AL

Cutting Range:	Up to 70mm ²
Length:	220mm
Max Diameter:	15mm
Weight:	0.29kg

Notes:

- Not Suitable for cutting steel wire, armoured cable and steel rope

HS-325A - Ratchet cable core cutter for CU/AL



Cutting Range:	Up to 240mm ²
Length:	260mm
Max Diameter:	32mm
Weight:	0.7kg

Notes:

- Not Suitable for cutting steel wire, armoured cable and steel rope

LK-450A - Ratchet cable core cutter for CU/AL



Cutting Range:	Up to 400mm ²
Length:	240mm
Max Diameter:	45mm
Weight:	1.06kg

Features:

- Not Suitable for cutting steel wire, armoured cable and steel rope

VC-500B - Heavy duty ratchet cable core cutter for CU/AL



Cutting Range:	Up to 500mm ²
Length:	235mm
Max Diameter:	50mm
Weight:	1.02kg

Notes:

- Extendable handles
- Not Suitable for cutting steel wire, armoured cable and steel rope

HS-765 - Ratchet cable core cutter for CU/AL



Cutting Range:	Up to 400mm ²
Length:	310mm
Max Diameter:	40mm
Weight:	1.02kg

Notes:

- Not Suitable for cutting steel wire, armoured cable and steel rope

HST75 - Ratchet cable core cutter for CU/AL

Cu/Al Cable	Armoured Cable	Marine Cable
Wire Rope	Rebar/Chain	Steel Strand
ACSR Cable		



Cutting Range:	Armoured CU Up to 120mm ² Armoured AL up to 75mm ²
Length:	420mm
Max Diameter:	75mm
Weight:	3.6kg

Notes:

- Suitable for cutting steel wire, armoured cable and steel rope
- Extendable hand grips

HST100 - Ratchet cable core cutter for CU/AL

Cu/Al Cable	Armoured Cable	Marine Cable
Wire Rope	Rebar/Chain	Steel Strand
ACSR Cable		



Cutting Range:	Armoured CU Up to 300mm ² Armoured AL up to 100mm ²
Length:	490mm
Max Diameter:	100mm
Weight:	6.4kg

Notes:

- Suitable for cutting steel wire, armoured cable and steel rope
- Extendable hand grips

LK-250 - Heavy duty cable cutter with long handles

Cutting Range:	Up to 250mm ²
Length:	600mm
Weight:	1.2kg

Notes:

- Not Suitable for cutting steel wire, armoured cable and steel rope

LK-500 - Heavy duty cable cutter with long handles

Cutting Range:	Up to 500mm ²
Length:	800mm
Weight:	2.8kg

Notes:

- Not Suitable for cutting steel wire, armoured cable and steel rope

L71060SC - Heavy duty wire rope cutters with long handles

Cutting Range:	7mm Ø steel rope or 5mm steel rod or up to 60mm ² copper cable
Length:	300mm
Weight:	0.80kg

Notes:

- Not Suitable for cutting steel wire and armoured cable

L71200SC - Heavy duty wire rope cutter with long handles

Crimping Range:	14mm Ø steel rope or 9mm steel rod or up to 200mm ² copper cable
Length:	600mm
Weight:	1.70kg

Notes:

- Not Suitable for cutting steel wire and armoured cable

L71400SC - Energy saving heavy duty wire rope and cable cutter with long handles

Cutting Range:	16mm Ø steel rope or up to 200mm ² copper cable
Length:	780mm
Weight:	3.2kg

Notes:

- Suitable for cutting steel wire, armoured cable and steel rope



CABLE & WIRE CUTTERS

HS-104C - Multi-function cutter and wire stripper



Length:	170mm
Weight:	0.328kg

Notes:

- Thin blade cutter
- Automatic rebound spring
- No damaging of the conductor core

FS-09 - Thin side cutter and wire stripper



Cutting Capacity:	1.3mm / 16AWG
Length:	170mm
Weight:	0.1kg
Material:	Stainless Steel

Features:

- Applicable to cut off different kinds of thin wire, circuit board, plastic left over material

HAND HELD

CONDUIT AND WIRING DUCT (TRUNKING) CUTTERS

WT-1 - PVC wiring duct cutter for cutting solid and slotted pvc wiring ducts



Length:	210mm
PVC Diameter:	34mm
Weight:	0.328kg

Features:

- Portable slotted cable duct cutter designed for use with small sizes slotted plastic wiring ducts and covers.
- Cuts EASCO Slotted Wiring Duct & Covers
- Locks into a slim, compact position for easy storage inside your tool box.
- Ratchet Release

L-42N - PVC wiring duct cutter for cutting solid and slotted PVC and PVC conduit wiring duct adaptor



Length:	240mm
PVC Diameter:	34mm
Weight:	0.28kg

Features:

- Locks into a slim, compact position for easy storage inside your tool box.
- Portable slotted cable duct cutter designed for use with small sizes slotted plastic wiring ducts and covers.
- Cuts EASCO Slotted Wiring Duct & Covers
- Ratchet Release



HS-600A - Metal cable tie tensioning tool with automatic tensioning and cut-off for Nylon 6.6 cable ties



Cable Tie widths:	2.3mm - 4.8mm
Length:	165mm
Weight:	0.3kg

Features:

- Handles cable ties from 2.3mm to 4.8mm
- Adjustable tension control
- Neatly cuts end of cable ties

HS-600P - Plastic cable tie tensioning tool with automatic tensioning and cut-off for Nylon 6.6 cable ties



Cable Tie widths:	2.3mm - 4.8mm
Length:	165mm
Weight:	0.2kg

Features:

- Light weight

D92137 - Heavy duty cable tie tensioning tool for Nylon 6.6 and Nylon 12 cable ties



Cable Tie widths:	2.5mm - 13mm
Length:	200mm
Weight:	0.25kg

Features:

- Adjustable tension control
- Neatly cuts end of cable ties

HS-519 - Metal heavy duty cable tie tensioning tool for Nylon 6.6 and Nylon 12 cable ties



Cable Tie widths:	2.4mm - 9mm
Length:	195mm
Weight:	0.26kg

Features:

- Manual cable tie cut off

D92134 - Cable tie tensioning tool with automatic tensioning and cut-off for stainless steel cable ties



Cable Tie widths:	Up to 7.9mm
Length:	178mm
Weight:	0.68kg

Features:

- Fastens and automatically cut ties with adjustable bundling pressure
- Tension adjusting indicator

D92134B - Cable tie tensioning tool for Stainless Steel cable ties



Cable Tie widths:	Up to 7.9mm
Length:	180mm
Weight:	0.70kg

Features:

- Suitable for self locking stainless steel cable ties
- Easy cut off process
- Light weight

LY-600M - Metal cable tie tensioning tool with automatic tensioning and cut-off

Cable Tie widths:	22mm - 48mm
Length:	300mm
Weight:	0.6kg

Features:

- Adjustable bundling pressure
- TPR trigger handle for increase comfort

**HS-700A** - Automatic wire stripper with spring return

Stripping Range:	0.5mm ² - 2mm ²
Length:	175mm
Weight:	0.36kg

Features:

- Precise blade design that does not damage the conductor or cores
- During stripping the wire is held firmly by clamping jaws with adjustable length stop
- The spring returns the stripper to the starting position

HS-700B - Automatic wire stripper with spring return

Stripping Range:	1mm ² - 3.2mm ²
Length:	175mm
Weight:	0.36kg

Features:

- Precise blade design that does not damage the conductor or cores
- During stripping the wire is held firmly by clamping jaws with adjustable length stop
- The spring returns the stripper to the starting position

L45733A - Self-adjusting wire stripper, cutter and crimper

Stripping Range:	1mm ² - 3.2mm ²
Length:	205mm
Weight:	0.3kg

Features:

- Easy stripping without any adjustment
- For cutting & stripping wire and cable
- For crimping insulated and non-insulated terminals

HS-700D - Auto-adjustable duck-mouth wire stripper and cutter

Stripping Range:	0.6mm ² - 6mm ²
Length:	175mm
Weight:	0.22kg

Features:

- Automatic stripping diameter for different wire cross sections precise blade design facilitated stripping without damaging the conductor cores
- The spring returns the stripper to the starting position

L505 - Adjustable wire stripper



Cutting Range:	0.25mm ² - 6mm ²
Length:	150mm
Weight:	0.36kg

Features:

- Adjustable screw to facilitate accurate cutting
- The spring returns the stripper to the starting position

FSA-0626 - Multifunction cable stripper and cutter



Cutting Capacity:	Up to 25mm ²
Stripping Capacity:	0.9mm ² - 6mm ²
Length:	164.5mm
Weight:	0.4kg

Features:

- Automatic rebound spring
- Will not damage the conductor or core

FS-D3 - Self adjusting insulation wire stripper



Stripping Range:	0.8mm ² - 2.5mm ²
Length:	190mm
Weight:	0.148kg

Features:

- For stripping the plastic or rubber insulation of single, multiple cables and wires of 0.08 - 2.5mm²
- With wire cutter for copper and aluminium wires, multiple strands up to 6mm²
- Will not damage the conductor or core



No. 4-28 Multi - Cable stripper with integrated stripping function for all standard flexible and solid cable



Stripping Range:	0.5mm ² - 6mm ²
AWG:	20-10
Length:	145mm
Weight:	0.061kg

Features:

- Completely ergonomic & fully insulated
- Progressive regulation and easy to operate adjusting wheel
- Precise, quick and safe stripping

No. 5 - Automatic wire stripper with lock function



Stripping Range:	0.2mm ² - 6mm ²
AWG:	24-10
Length:	170mm
Weight:	0.107kg

Features:

- Precise work with adjustable length stop (5 - 12 mm)
- Integrated, well accessible side cutter up to 2 mm Ø
- Automatic Wire Stripper

No. 6 - Fully insulated wire stripper



Stripping Range:	0.2mm ² - 6mm ²
AWG:	24-10
Length:	170mm
Weight:	0.107kg

Features:

- Precise work with adjustable length stop (5 - 12 mm)
- Saves space by locking the strippers
- Fully insulated, automatic Wire Stripper

No. 7 - All round wire stripper for flexible and solid cable



Stripping Range:	Flexible 0.5mm ² - 16mm ² Solid: 0.5mm ² - 10mm ²
AWG:	20-6 / 20-8
Length:	170mm
Weight:	0.217kg

Features:

- Precise work with optical length scale
- Integrated, well accessible side cutter up to 3 mm Ø
- For many different cable types in building installation

No. 7F - Wire stripper for standard flat cable



Stripping Range:	0.75mm ² - 4mm ²
AWG:	18-11
Length:	170mm
Weight:	0.220kg

Features:

- Precise work with adjustable length stop (up to 26mm) (5/16 - 1")
- Integrated, well accessible side cutter up to 3 mm Ø (1/8")
- Automatic Wire Stripper

No. 1F - Quick coaxial cable stripper



Stripping Range:	4.8mm ² - 7.5mm ²
Length:	125mm
Weight:	0.047kg

Features:

- Gripping jaws for screwing F-connectors on the cable
- Space-saving mounting or dismounting of F-connectors by integrated open hexagon with 11 mm wrench size (SW 11)
- Stripping without adjusting the blades with length stop for all common F-connectors (6/4 mm)

No. 2 - Ergonomically designed coaxial cable stripper



Stripping Range:	4.8mm ² - 7.5mm ²
Length:	110mm
Weight:	0.028kg

Features:

- There is no need to adjust the cutting depth
- Also suitable for flexible cables
- Two-level stripping of all common coaxial cables

No. 3 - Multi level stripper for coaxial cable



Stripping Range:	4.8mm ² - 7.5mm ²
Length:	125mm
Weight:	0.055kg

Features:

- Also suitable for flexible cables
- Integrated and well accessible side cutter up to 8 mm Ø
- Allows two- or three-level stripping of all common coaxial cables

No. 13 - Round cable stripper



Stripping Range:	8mm ² - 13mm ²
Length:	120mm
Weight:	0.044kg

Features:

- Flush stripping even in hard-to-reach areas
- It is not necessary to adjust the cutting depth
- For all standard round cables

No. 10 - Data cable stripper (Cat5, Cat6, Cat7)



Stripping Range:	4.5mm ² - 10mm ²
Length:	140mm
Weight:	0.048kg

Features:

- Integrated length stop, adjustable to the required sheath opening of network outlets and other plugs (3-10 cm)
- Safe work with the ergonomic anti-slip handle shape

No. 300 Due Crimper - Cable stripper and crimper



Stripping Range:	0.5mm ² - 6mm ²
Crimping Range:	0.5mm ² - 2.5mm ² 4.0mm ² - 6.0mm ²
AWG:	20-10
Length:	160mm
Weight:	0.116kg

Features:

- Two crimping ranges are offered (0.5 - 2.5 mm² and 4.0 - 6.0 mm²) according to DIN 46228-2
- Integrated, well accessible side cutter up to 6 mm²

No. 30 - Multi purpose data cable stripper



Stripping Range:	0.05mm ² - 0.5mm ²
AWG:	30-20
Length:	125mm
Weight:	0.060kg

Features:

- Stripping of conductors and stranded wires e.g. telephones lines
- Precise stripping with adjustable length stop (3.5 - 14 mm)
- Integrated, well accessible side cutter up to 8 mm Ø
- Removal of the outer insulation on data cables

NO. 3 Mini Solar - Quick stripper for all common solar cables



Stripping Range:	1.5mm ² - 6mm ²
AWG:	15-9
Length:	125mm
Weight:	0.058kg

Features:

- Quick stripping of all common solar cables
- Precise work with adjustable length stop (6 - 28 mm)
- Integrated, well accessible side cutter up to 4 mm² (15 AWG)

No. 7 Solar - Automatic wire stripper for all common solar cables



Stripping Range:	1.5mm ² - 6mm ²
AWG:	15-9
Length:	170mm
Weight:	0.218kg

Features:

- Precise work with adjustable length stop (up to 26mm)
- Integrated, well accessible side cutter up to 3 mm Ø
- Automatic Wire Stripper

No. 35 - Cable scissors for cutting, stripping and crimping cables



Stripping Range:	CU/AL: <35mm ² CU/AL: <50mm ²
Length:	150mm
Weight:	0.090kg

Features:

- 2-Component handles for increased safety
- Blades made of special stainless steel

Easy Opener - Ideal for loosening switches, luminaires or similar components



Length:	180mm
Weight:	0.022kg

Features:

- Ideal for loosening switches, luminaires or similar components
- Slim and filigree design – flexible and stable at the same time
- Three surfaces with different material thickness

Starter Set Pro - Ideal selection for house installation

Strippers Included:	No. S4-28 Multi, No. 2, No. 5, No. 13
Case Size:	255mm x 20mm x 60mm
Weight:	0.575kg

Features:

- The Professional Starter Set is the basic equipment for craftsmen in the fields of electrical, heating and customer service, and is also suitable for the home and hobby.



Multi Opener - Ideal tool to gently open sensitive equipment and dismantling clipped housing



Length:	180mm
Weight:	0.22kg

Features:

- No scratching of sensitive surfaces
- Conductive ESD material protects against electrostatic discharge
- Flexible fibreglass-reinforced polyamide

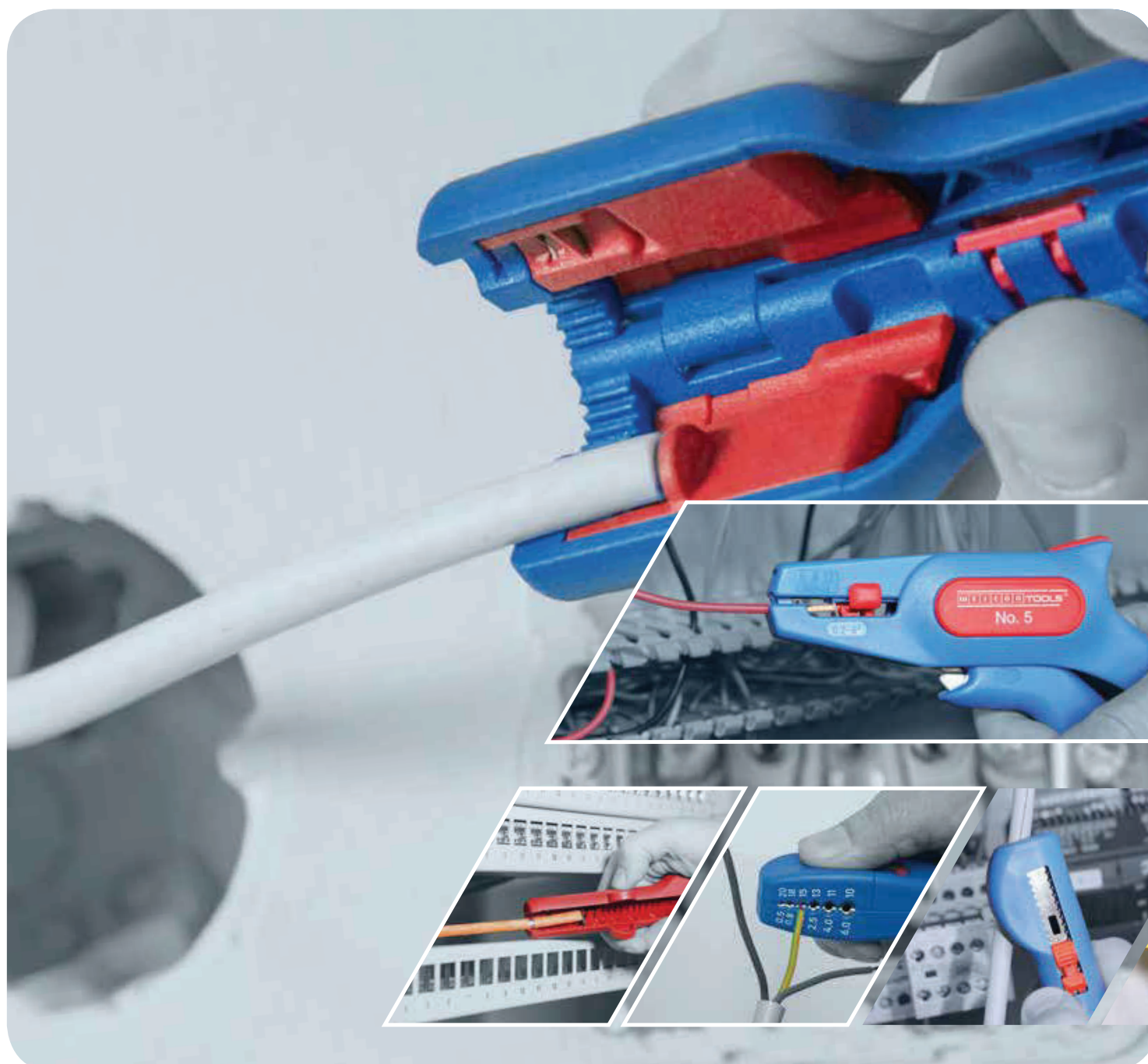
No. 400 - Multi level stripper



Stripping Range:	0.5mm ² - 6mm ²
Length:	155mm
Weight:	0.79kg

Features:

- Flush stripping, even in hard-to-reach areas
- Safe and space saving storage with closing clip
- Circular cutting - longitudinal cutting - stripping - cutting



YYT-1 - Ratchet crimping tool for pre-insulated terminals



Crimping Range:	0.5mm ² - 6mm ²
Length:	254mm
Weight:	0.603kg
AWG	20-11

Features:

- Pressure Adjustment
- Ratchet release

AP-03C - Ratchet energy saving crimping tool for pre-insulated terminals



Crimping Range:	0.5mm ² - 6mm ²
Length:	250mm
Weight:	0.55kg
AWG	20-10

Features:

- Continuous crimping at preset tension ensures accurate crimp
- Ratchet release
- Pressure adjustment

AP-07FL - Ratchet energy saving crimping tool for pre-insulated flag terminals



Crimping Range:	1.5mm ² - 2.5mm ²
Length:	250mm
Weight:	0.55kg
AWG	15-13

Features:

- Continuous crimping at preset tension ensures accurate crimp
- Ratchet release
- Pressure adjustment

AP-103 - Ratchet energy saving crimping tool for closed end connectors



Crimping Range:	0.5mm ² - 6mm ²
Length:	230mm
Weight:	0.57kg
AWG	20-10

Features:

- Continuous crimping at preset tension ensures accurate crimp
- Ratchet release
- Pressure adjustment

AP-30J - Ratchet energy saving crimping tool for pre-insulated terminals



Crimping Range:	1mm ² - 6mm ²
Length:	250mm
Weight:	0.55kg
AWG	17-10

Features:

- Continuous crimping at preset tension ensures accurate crimp
- Ratchet release

VH1-02C-1 - Mini ratchet crimping tool for pre-insulated terminals



Crimping Range:	0.5mm ² - 2.5mm ²
Length:	170mm
Weight:	0.305kg
AWG	20-13

Features:

- Ratchet Release
- Pressure adjustment

L6011 - Crimping tool for pre-insulated terminals with built-in wire stripper and screw cutter & ignition terminals



Crimping Range:	0.5mm ² - 6mm ²
Length:	203mm
Weight:	0.28kg
AWG	22-10

Features:

- Low cost

L6080 - Crimping tool for pre-insulated and uninsulated terminals with built-in wire-strippers and screw cutter & ignition terminal crimper



Crimping Range:	0.5mm ² - 6mm ²
Length:	230mm
Weight:	0.18kg
AWG	22-10

Features:

- Low cost

YYT21- Crimping plier for cable ferrules



Crimping Range:	0.75mm ² - 10mm ²
Length:	180mm
Weight:	0.20kg
AWG	22-20

Features:

- Plier type with spring assist

LAS-005 - Ratchet universal crimping tool for all terminals (Interchangeable jaws)



Crimping Range:	0.5mm ² - 10mm ² (end sleeves) 0.5mm ² - 6mm ² (Pre-ins) 0.5mm ² - 10mm ² (Copper)
Length:	230mm
Weight:	0.68kg
AWG	20-8

Features:

- Pressure Adjustment
- Ratchet release

AP-04WFL - Ratchet energy saving crimping tool for bootlace ferrules (end sleeves)



Crimping Range:	0.5mm ² - 6mm ²
Length:	250mm
Weight:	0.6kg
AWG:	20-11

Features:

- Ratchet Release
- Pressure Adjustment

AP-26TW - Ratchet energy saving crimping tool for double bootlace ferrules (end sleeves)



Crimping Range:	2 x 0.5mm ² - 2 x 6mm ²
Length:	250mm
Weight:	0.73kg
AWG:	2 x 20-10

Features:

- Ratchet Release
- Pressure Adjustment

YAC-5 - Ratchet crimping tool for bootlace ferrules (end sleeves)



Crimping Range:	0.5mm ² - 6mm ²
Length:	200mm
Weight:	0.4kg
AWG:	12-4

Features:

- Ratchet Release
- Pressure Adjustment

YAC-6 - Ratchet crimping tool for bootlace ferrules (end sleeves)



Crimping Range:	0.5mm ² - 16mm ²
Length:	203mm
Weight:	0.4kg
AWG:	12-4

Features:

- Ratchet Release
- Pressure Adjustment

HSC8 6-4 - Ratchet square crimping tool for bootlace ferrules (end sleeves)



Crimping Range:	0.25mm ² - 6mm ²
Length:	175mm
Weight:	0.38kg
AWG:	23-11

Features:

- Ratchet Release
- Pressure Adjustment
- Self adjusting

HSC8 6-6 - Ratchet hexagonal crimp crimping tool for bootlace ferrules (end sleeves)



Crimping Range:	0.25mm ² - 6mm ²
Length:	175mm
Weight:	0.38kg
AWG:	23-10

Features:

- Ratchet Release
- Pressure Adjustment
- Self adjusting

VH2-35WFL - Spring operated crimping tool for bootlace ferrules (end sleeves)



Crimping Range:	10mm ² - 35mm ²
Length:	200mm
Weight:	0.5kgkg
AWG:	7-2

Features:

- Ratchet Release
- Pressure Adjustment

YAC-8 - Square ratchet crimping tool for bootlace ferrules (end sleeves)



Crimping Range:	0.08mm ² - 6mm ²
Length:	175mm
Weight:	038kg
AWG:	28-10

Features:

- Ratchet Release
- Pressure Adjustment
- Self adjusting

YAC-9 - Hexagonal ratchet crimping tool for bootlace ferrules (end sleeves)



Crimping Range:	0.08mm ² - 6mm ²
Length:	170mm
Weight:	0.38kg
AWG:	28-10

Features:

- Ratchet Release
- Pressure Adjustment
- Self adjusting

HSC8 16-4 - Ratchet square crimp crimping tool for bootlace ferrules (end sleeves)



Crimping Range:	4mm ² - 6mm ²
Length:	210mm
Weight:	0.52kg
AWG:	12-6

Features:

- Ratchet Release
- Pressure Adjustment
- Self adjusting

VH1-06WF - Mini ratchet crimping tool for bootlace ferrules (end sleeves)



Crimping Range:	0.25mm ² - 6mm ²
Length:	170mm
Weight:	0.305kg
AWG:	23-11

Features:

- Ratchet Release
- Pressure Adjustment

YYT-22 - Spring operated crimping tool for bootlace ferrules (end sleeves)



Crimping Range:	0.5mm ² - 2.5mm ²
Length:	150mm
Weight:	0.18kg
AWG:	24-14

Features:

- Spring operated

VH1-48B - Mini ratchet crimping tool for brass roll-in terminals (open barrel terminals)

Crimping Range:	0.5mm ² - 2.5mm ²
Length:	170mm
Weight:	0.34kg
AWG:	20-13

Features:

- Ratchet Release
- Pressure Adjustment

AP-03B - Ratchet energy crimping tool for brass roll-in terminals (open barrel terminals)

Crimping Range:	0.5mm ² - 6mm ²
Length:	250mm
Weight:	0.55kg
AWG:	20-13

Features:

- Ratchet Release
- Pressure Adjustment

HS-03B - Ratchet crimping tool for brass roll-in terminals (open barrel terminals)

Crimping Range:	1.5mm ² - 6mm ²
Length:	230mm
Weight:	0.6kg
AWG:	28-15

Features:

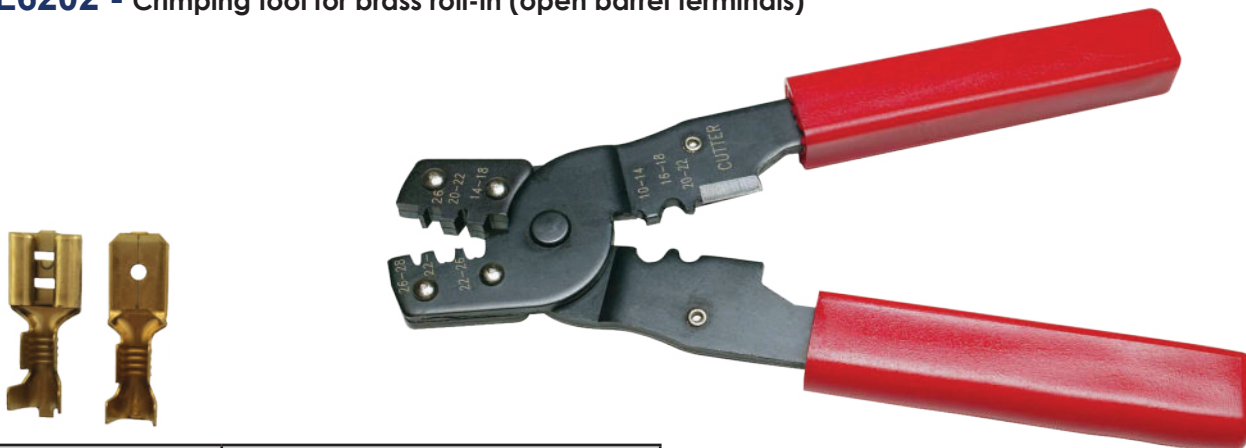
- Ratchet Release
- Pressure Adjustment

YYT11 - Ratchet crimping tool for brass roll-in terminals (open barrel terminals)

Crimping Range:	0.5mm ² - 6mm ²
Length:	227mm
Weight:	0.56kg
AWG:	22-10

Features:

- Ratchet Release
- Pressure Adjustment

L6202 - Crimping tool for brass roll-in (open barrel terminals)

Crimping Range:	0.8mm ² - 2.5mm ²
Length:	170mm
Weight:	0.22kg
AWG:	28-15

Features:

- Spring operated

AP-101 - Ratchet energy saving crimping tool for copper lugs and ferrules

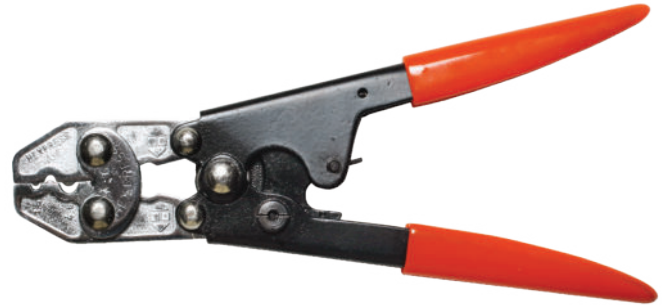


Crimping Range:	0.5mm ² - 10mm ²
Length:	250mm
Weight:	0.60kg

Features:

- Suitable for crimping non-insulated connector
- Carbon steel with hardened and tempered jaws ensures accurate crimp
- Perfect handle gripping position and structure guarantee high crimping quality

HEXA6-10 - Ratchet indent crimping tool for copper lugs and ferrules



Crimping Range:	0.5mm ² - 6mm ²
Length:	200mm
Weight:	0.38kg

Features:

- Ratchet Release

HEXB-16 - Ratchet indent crimping tool for copper lugs and ferrules



Crimping Range:	1.5mm ² - 16mm ²
Length:	330mm
Weight:	0.66kg

Features:

- Ratchet Release

HS-8 - Ratchet indent crimping tool for copper lugs and ferrules



Crimping Range:	1.25mm ² - 8mm ²
Length:	270mm
Weight:	0.60kg

Features:

- Ratchet Release

HS-16 - Ratchet indent crimping tool for copper lugs and ferrules



Crimping Range:	1.25mm ² - 16mm ²
Length:	270mm
Weight:	0.70kg

Features:

- Ratchet Release

HS-22 - Ratchet indent crimping tool for copper lugs and ferrules



Crimping Range:	5.5mm ² - 25mm ²
Length:	360mm
Weight:	0.84kg

Features:

- Ratchet Release

HS-38 - Ratchet indent crimping tool for copper lugs and ferrules

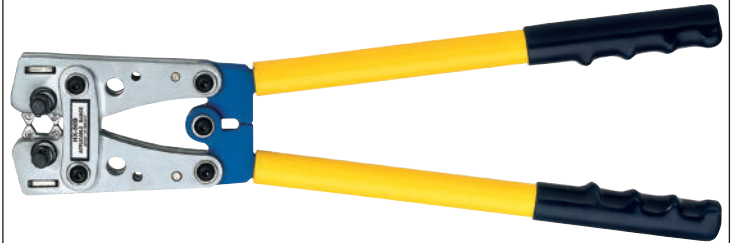


Crimping Range:	6mm ² - 38mm ²
Length:	354mm
Weight:	0.86kg

Features:

- Ergonomic handle design and providing a comfortable grip, more convenient operation.
- Labor-saving ratchet device, easy operation, clear crimping effects.
- The small size, simple operation and lock-controlled switch ensure durability and good performance.

HX-50B - Hexagonal tool with moveable and revolving dies

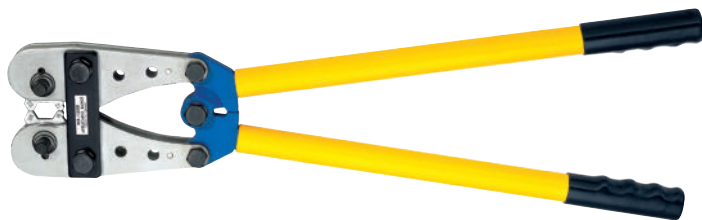


Crimping Range:	6mm ² - 50mm ²
Length:	390mm
Weight:	1.72kg

Features:

- Easy operation: press to rotate the inside dies
- Has an anti-slip handle for a safe application for heavy crimping works
- Used for non-welding and standard electrical connection
- Made of hardened steel, long life, accurate bore diameter and good crimping effect

HX-120B - Hexagonal tool with moveable and revolving dies

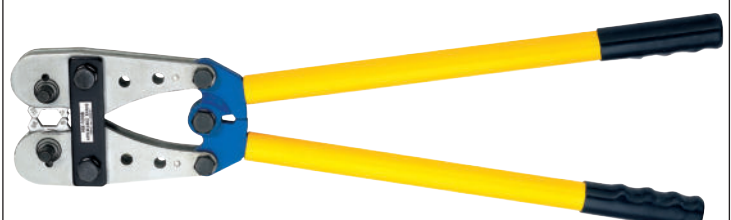


Crimping Range:	10mm ² - 120mm ²
Length:	620mm
Weight:	4.0kg

Features:

- Easy operation: press to rotate the inside dies
- Has an anti-slip handle for a safe application for heavy crimping works
- Used for non-welding and standard electrical connection
- Made of hardened steel, long life, accurate bore diameter and good crimping effect

HX-150B - Hexagonal tool with moveable and revolving dies



Crimping Range:	25mm ² - 150mm ²
Length:	620mm
Weight:	4.0kg

Features:

- Easy operation: press to rotate the inside dies
- Has an anti-slip handle for a safe application for heavy crimping works
- Used for non-welding and standard electrical connection
- Made of hardened steel, long life, accurate bore diameter and good crimping effect

HX4 - Ratchet hexagonal crimping tool for copper lugs and ferrules



Crimping Range:	1mm ² - 4mm ²
Length:	270mm
Weight:	0.45kg

Features:

- Ratchet Release

HX-10 - Ratchet hexagonal crimping tool for copper lugs and ferrules



Crimping Range:	2mm ² - 10mm ²
Length:	270mm
Weight:	0.55kg

Features:

- Ratchet Release

HX16 - Ratchet hexagonal crimping tool for copper lugs and ferrules



Crimping Range:	6mm ² - 16mm ²
Length:	270mm
Weight:	0.52kg

Features:

- Ratchet Release

HX25 - Ratchet hexagonal crimping tool for copper lugs and ferrules



Crimping Range:	6mm ² - 25mm ²
Length:	270mm
Weight:	0.80kg

Features:

- Ratchet Release

L6095YO - Indent crimping tool for copper lugs and ferrules



Crimping Range:	10mm ² - 120mm ²
Length:	570mm
Weight:	3.12kg

Features:

- Adjustable nest dies

YYT8 - Ratchet crimping tool for copper lugs and ferrules



Crimping Range:	1.5mm ² - 10mm ²
Length:	262mm
Weight:	0.58kg

Features:

- Ratchet Release

VH2-12 - Oval terminal crimper



Crimping Range:	6mm ² - 10mm ²
Length:	200mm
Weight:	0.5kg
AWG:	10-7

Features:

- Ratchet Release
- Pressure Adjustment

HS-12 - Oval terminal crimper



Crimping Range:	0.5mm ² - 6mm ²
Length:	254mm
Weight:	0.600kg
AWG:	20-11

Features:

- Ratchet Release
- Pressure Adjustment

AP-02H - Ratchet energy saving crimping tool for SW5.4 + SW6.4B for screen COAX connectors


Length:	250mm
Weight:	0.6kg

	6.5mm	4.5mm		1.72mm	
55, 58, 59, 62, 140, 223, 303, 400, Fiber Optic, Belden 827					

Features:

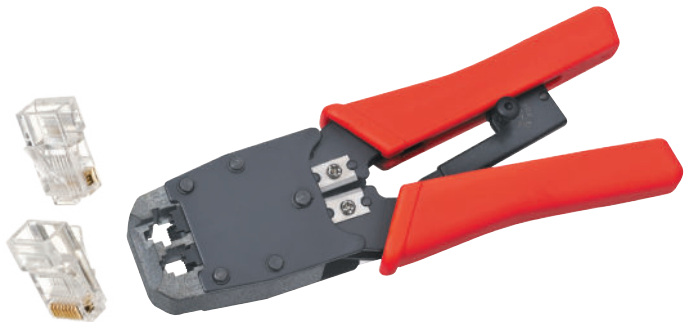
- Ratchet Release
- Pressure Adjustment

YAC-3 - Co-Axial hex crimping tool


Crimping Range:	1.72mm ² - 8.2mm ²
Length:	240mm
Weight:	0.52kg

Features:

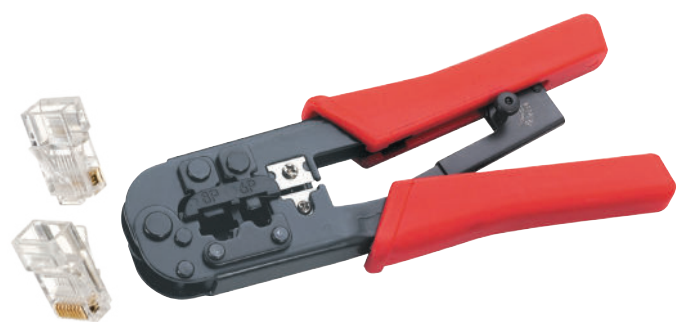
- Ratchet Release
- Pressure Adjustment

HT-500R - Ratchet modular crimping tool


Crimping Range:	RJ45, RJ11/12
Length:	190mm
Weight:	0.45kg

Features:

- Ratchet Release

HT-568R - Ratchet modular crimping tool


Crimping Range:	RJ11/12, FJ45
Length:	190mm
Weight:	0.51kg

Features:

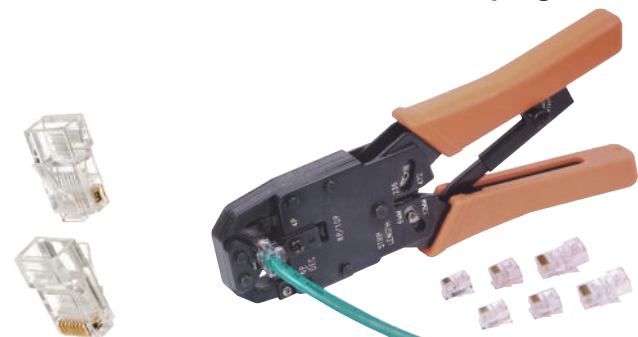
- Ratchet Release

HT-86 - Ratchet modular crimping tool


Crimping Range:	RJ11/12, FJ45
Length:	190mm
Weight:	0.28kg

Features:

- Ratchet Release

HT200R - Ratchet modular crimping tool


Crimping Range:	RJ10, RJ11/12, FJ45
Length:	205mm
Weight:	0.51kg

Features:

- Ratchet Release

CRIMPING TOOLS

MODULAR CONNECTORS

TL-2008R - Ratchet modular crimping tool

Crimping Range:	RJ45, PJ12, RJ11
Length:	185mm
Weight:	0.48kg

Features:

- Ratchet Release



CRIMPING TOOLS

MOLEX TERMINALS

YAC13 - Molex type terminal crimping tool (2.54/3.96)

Crimping Range:	0.08mm ² - 0.8mm ²
Length:	175mm
Weight:	0.42kg
AWG:	28-18

Features:

- Ratchet Release
- Pressure Adjustment



CRIMPING TOOLS

DEUTSCH TYPE TERMINALS

TC14402 - Ratchet crimping tool. For four mandrel turned contact. Deutsch type terminal crimper



Crimping Range:	0.5mm ² - 1.5mm ²
Length:	165MM
Weight:	0.28kg
AWG:	22-16

Features:

- Ratchet Release
- Self Adjusting

TDW1 - Ratchet crimping tool. For four mandrel turned contact. Deutsch type terminal crimper



Crimping Range:	0.33mm ² - 1.12mm ²
Length:	230mm
Weight:	0.68kg
AWG:	26-10

Features:

- Repetive, high crimping quality due to internal lock (Self releasing mechanism)
- Optimum transmission of force due to highly effective lever action for fatigue-reduced operation

TDW2 - Ratchet crimping tool. For four mandrel turned contact. Deutsch type terminal crimper

Crimping Range:	0.21mm ² - 3.16mm ²
Length:	230mm
Weight:	0.45kg
AWG:	24-12

Features:

- Repetive, high crimping quality due to internal lock (Self releasing mechanism)
- Optimum transmission of force due to highly effective lever action for fatigue-reduced operation



CPC-85FR - Cable and wire cutter for CU/AL

Cutting Range:	85mm
Length:	710mm
Output:	6.7 Tons
Weight:	12.5kg

Notes:

- For copper, aluminium cable and telephone cable.
- The head can be easily opened to allow the cutting of running cables
- NOT for armoured cable

CPC-85H - Cable and wire cutter for CU/AL

Cuts Copper Strands:	28mm
Aluminium Strands:	38mm
Telephone Cable:	85mm
Length:	510mm
Output:	6.7 Tons
Weight:	6.1kg

Notes:

- Two stage pumping action for rapid blade movement
- Head rotates 180°
- NOT for armoured cable

CPC-100H - Hydraulic cable cutter

Cutting Range:	Barb Cu Strand: 42mm Barb AL Strand: 46mm Telephone cable CCP:100mm Lead Sheathed Cable: 100mm Underground Cable: 75mm
Length:	560mm
Output:	7.5 Tons
Weight:	11kg

Features:

- NOT for armoured cable

CPC-130H - Hydraulic cable cutter

Cutting Range:	Cu/AL: 130mm
Length:	600mm
Output:	7 Tons
Weight:	13kg

Features:

- Bolt lock head
- NOT for armoured cable

CPC-105KH - Hydraulic cable cutter, scissor type blade

Cutting Range:	105mm ² Cu/AL
Length:	540mm
Output:	13.7 Tons
Weight:	10.50kg

Features:

- NOT for armoured cable

CPC-120KH - Hydraulic cable cutter, scissor type blade

Cutting Range:	120mm ² Cu/AL
Length:	620mm
Output:	13.7 Tons
Weight:	12.96kg

Features:

- NOT for armoured cable

CPC-65A - Hydraulic cable cutter, scissor type blade

Cutting Range:	65mm ² Cu/AL
Length:	600mm
Output:	6.7 Tons
Weight:	4.08kg

Features:

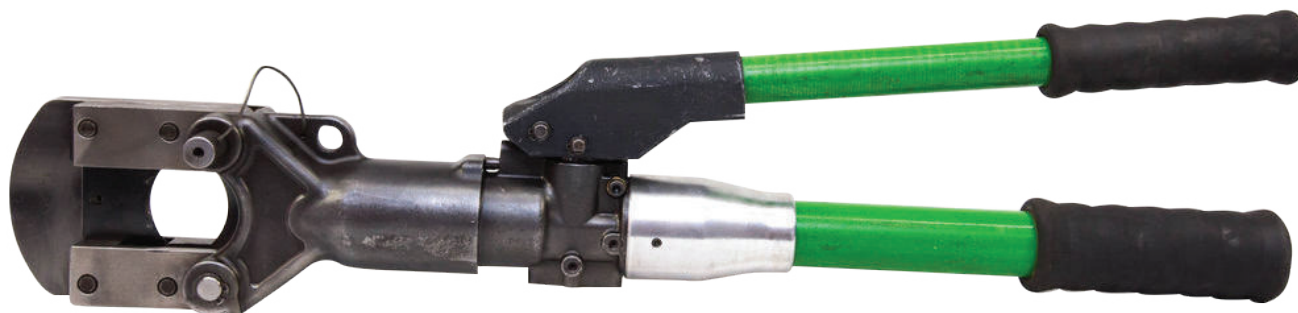
- NOT for armoured cable

CPC-85K - Hydraulic cable cutter

Cutting Range:	85mm ² Cu/AL
Length:	600mm
Output:	6.7 Tons
Weight:	4.5kg

Features:

- NOT for armoured cable
- Metal Case included

CGG40 - Hydraulic cutting tool (hand-held)

Cutting Range:	40mm ²
Length:	645mm
Weight:	5.88kg

Features:

- Carry bag included
- NOT for armoured cable

HP-210D - Hydraulic crimping tool (hand-held) indent crimp



Crimping Range:	16mm ² - 240mm ²
Length:	460mm
Output:	12 Tons
Accessories:	Case and Dies
Weight:	4.5kg
Dies Included:	25mm, 35mm, 50mm, 70mm, 95mm, 120mm, 150mm, 185mm, 240mm

Features:

- Manual release

HP-240 - Hydraulic crimping tool (hand-held)



Crimping Range:	16mm ² - 240mm ²
Length:	480mm
Output:	12 Tons
Accessories:	Case and Dies
Weight:	3.8kg
RAM Stroke:	18mm
Dies Included:	16mm, 25mm, 35mm, 50mm, 70mm, 95mm, 120mm, 150mm, 185mm, 240mm

Features:

- Manual release

HP-240F - Hydraulic crimping tool (hand-held)



Crimping Range:	16mm ² - 240mm ²
Length:	380mm
Output:	5 Tons
Accessories:	Case and Dies
Weight:	3kg
RAM Stroke:	15mm
Dies Included:	16mm, 25mm, 35mm, 50mm, 70mm, 95mm, 120mm, 150mm, 185mm, 240mm

Features:

- Auto pressure valve

HP-300 - Hydraulic crimping tool (hand-held)



Crimping Range:	16mm ² - 300mm ²
Length:	480mm
Output:	12 Tons
Accessories:	Case and Dies
Weight:	3.9kg
RAM Stroke:	18mm
Dies Included:	16mm, 25mm, 35mm, 50mm, 70mm, 95mm, 120mm, 150mm, 185mm, 240mm, 300mm

Features:

- Manual Release

CO-630A for use with CFP800 - Hydraulic crimping tool head

Crimping Range:	150mm ² - 630mm ²
Output:	35 Tons/10000PSI working Pressure
Length:	360mm
Weight:	16.5kg
RAM Stroke:	25mm
Accessories:	Case and Dies
Dies included:	150mm, 185mm, 240mm, 300mm, 400mm, 500mm, 630mm

Features:

- Case Included



CYO-430 - Hydraulic crimping tool

Crimping Range:	50mm ² - 400mm ²
Length:	620mm
Output:	12 Tons
Weight:	6.5kg
RAM Stroke:	30mm
Dies Included:	50mm, 70mm, 95mm, 120mm, 150mm, 240mm, 300mm, 400mm

Features:

- Twist release

CYO-510B - Hydraulic hexagon crimping tool

Crimping Range:	50mm ² - 400mm ²
Length:	650mm
Output:	13 Tons
Weight:	7.2kg
RAM Stroke:	38mm
Dies included:	50mm, 70mm, 95mm, 120mm, 150mm, 185mm, 240mm, 300mm, 400mm

Features:

- Twist Release

CYO-430H for use with CFP800 - Hydraulic crimping tool head

Crimping Range:	50mm ² - 400mm ²
Output:	12 Tons
Weight:	4kg
Length:	340mm
RAM Stroke:	30mm
Accessories:	Case and Dies
Dies included:	50mm, 70mm, 95mm, 120mm, 150mm, 185mm, 240mm, 300mm, 400mm

Features:

- Case included

CYO-510H - Hydraulic crimping tool head

Crimping Range:	50mm ² - 400mm ²
Length:	340mm
Output:	13 Tons
Weight:	5kg
RAM Stroke:	38mm
Dies Included:	50mm, 70mm, 95mm, 120mm, 150mm, 240mm, 300mm, 400mm

Features:

- Case included

MPL050OA4000 - Hydraulic operated dieless crimping tool

Crimping Range:	10mm ² - 500mm ² CU/AL
Length:	650mm
Output:	50kN
Weight:	4.3kg

Features:

- Auto release

MAP-8W - Hydraulic hole punch 360° adjustable head for punching holes in electrical switchboards and panels



Max Thickness:	Mild Steel: 3.2mm ² Staninless steel: 1.6mm ²
Punching Force:	8.9 Tons
Dies Included:	21.8mm, 22.6mm, 54.1mm, 42.7mm, 48.7mm, 60.2mm

Notes:

- Includes plastic carry case
- It contain hydraulic punch driver, with 360 degree rotatable head for flexible operation in place.
- With the help of hydraulic system, making holes by hand become fast and easy

MAP-8RA - Hydraulic hole punch with extended head 360° adjustable for punching holes in electrical switchboards and panels



Max Thickness:	Mild Steel: 3.2mm ² Stainless Steel: 16mm ²
Punching Force:	16 Tons
Dies Included:	21.8mm, 22.6mm, 54.1mm, 42.7mm, 48.7mm, 60.2mm

Notes:

- Includes plastic carry case

MAP-8A - Inline hydraulic hole punch 360° adjustable for punching holes in electrical switchboards and panels



Max Thickness:	Mild Steel: 3.2mm ² Staninless steel: 1.6mm ²
Punching Force:	16 Tons
Dies Included:	21.8mm, 22.6mm, 54.1mm, 42.7mm, 48.7mm, 60.2mm

Notes:

- Includes plastic carry case
- It contain hydraulic punch driver.
- With straight head, compact and easy carrying.
- With the help of hydraulic system, making holes by hand become fast & easy
- 360 degree head design for flexible operation in place.

MAP-8ZA- Hydraulic hole punch with swivel head (90° Head) for punching holes in electrical switchboards and panels



Max Thickness:	Mild Steel: 3.2mm ² Staninless steel: 1.6mm ²
Punching Force:	8.9 Tons
Dies Included:	21.8mm, 22.6mm, 54.1mm, 42.7mm, 48.7mm, 60.2mm

Notes:

- Includes plastic carry case

SYK-15 - Compact, light and fast hydraulic hole punch 360° adjustable for punching holes in electrical switchboards and panels

Punching Range:	Mild Steel: below 3mm (Ø 16.5 - 115.5mm) Staninless steel: 1.6mm ²
Punching Force:	15 Tons
Dies Included:	Round Punch: Ø 22..0mm, 27.5mm, 34.3mm, 43.0mm, 60.8mm, up to 115.5mm Square Punch: 32.0 x 32.0mm

Notes:

- Small rod, large rod and O-ring set
- Includes plastic carry case



CFP-800 - Foot operated, 2 stage, hydraulic pump complete with hose and female coupling

Pressure:	700 Bar 10 000psi
Weight:	17.7kg

Features:

- Single-acting foot pump
- With pressure release lever with wide bottom frame
- High pressure oil pipe supplied
- Foot operated style
- Quick couple kept fast connection with compatible tools
- Double speed unit: for quick operation, allow quick oil delivery under no load condition (12.26cc/stroke) and then build sufficient working pressure under load condition (20-700 bar)
- Safety valve: automatically relieves pressure when rated pressure is reached, to protect hydraulic system from over pressure
- Packed with steel case packing for easy carrying and protect pumps well during shipping


BPL550A1120 - Inline Hydraulic crimping tool, battery operated hand grip crimping tool


Crimping Range:	6mm² - 240mm² CU/AL
Weight:	2.9kg
Battery:	18V
Length:	128mm
Accessories:	Case and Charger
Dies Available:	6/35; 10/50; 16/70; 25/95; 4/120; 150; 185; 240

Features:

- Robust plastic housing with rubber grip handle
- Quick opening and closing head, 180° rotatable with interchangeable dies and wide crimping
- Maximum operating speed with high performance motor
- Quick motor stop function for high user safety
- Simple display panel with light diode for battery charge level, crimping failure and maintenance control
- Manual retraction when crimp is complete
- Large and ergonomics triggers
- Pressure safety system to prevent over pressure failures
- Energy saving function by stopping tool after 10 min unused
- USB connection for data analysis & preventive maintenance with dedicate software
- Workplace illumination by LED

BPL620A1120 - Inline hydraulic crimping tool, battery operated hand grip crimping tool


Crimping Range:	6mm² - 300mm² CU/AL
Weight:	2.9kg
Battery:	18V
Length:	128mm
Accessories:	Case and Charger
Dies available:	6, 10, 16, 25, 35, 50, 70, 95, 120, 150, 185, 240, 300

Features:

- Robust plastic housing with rubber grip handle
- Quick opening and closing head, 180° rotatable with interchangeable dies and wide crimping
- Maximum operating speed with high performance motor
- Quick motor stop function for high user safety
- Simple display panel with light diode for battery charge level, crimping failure and maintenance control
- Manual retraction when crimp is complete
- Large and ergonomics triggers
- Pressure safety system to prevent over pressure failures
- Energy saving function by stopping tool after 10 min unused
- USB connection for data analysis & preventive maintenance with dedicate software
- Workplace illumination by LED

BPE0500A1120 - Battery operated open type dieless crimping tool



Crimping Range:	10mm ² - 5000mm ² CU/AL
Weight:	4.75kg
Battery:	18V
Length:	370mm
Force:	50kN

Features:

- Carry case and charger included
- Rotative head - 360°
- Simple hydraulic system
- Lighter & smaller

BPP0500B1320 - Battery operated dieless crimping tool head



Crimping Range:	10mm ² - 240mm ² CU/AL
Weight:	6.1kg
Battery:	18V
Length:	430mm
Force:	50kN

Features:

- Carry case and charger included
- Rotative head - 360°
- 2 Speed hydraulic system

EMT-400C - Battery operated crimping tool



Crimping Range:	16mm ² - 400mm ² CU/AL
RAM:	42mm
Weight:	7.7kg
Battery:	18V, 3Ah
Accessories:	Plastic case, 1 Charger, 2 batteries
Dies included:	16mm, 25mm, 35mm, 50mm, 70mm, 95mm, 120mm, 150mm, 185mm, 240mm, 300mm, 400mm

Features:

- C-Shape Tool Head design allows operator to directly place cable between dies, do not need to remove locking bolt or open tool head
- Automatically releases pressure and retracts ram when crimping is complete
- Immediately stop motor and do not retract ram when operator releases switch during operation
- LED illumination for easier operation in dark place, LED indicator let operator charge battery in time
- Powerful motor ensures sufficient working force
- High-performance battery allows longer working time with one charge

BPE0550A1120 - Battery operated pistol grip dieless crimping tool



Crimping Range:	16mm ² - 240mm ²
Length:	480mm
Weight:	3.15kg
Battery:	18V
Output:	12 Tons
Accessories:	Case and Dies
Dies available:	16mm, 25mm, 35mm, 50mm, 70mm, 95mm, 120mm, 150mm, 185mm, 240mm, 300mm

Features:

- Light weight, turnable head
- Pistol design in a solid housing

BPP1301B1320 - Battery operated pistol grip dieless crimping tool

Crimping Range:	6mm ² - 400mm ² CU/AL
Weight:	6.5kg
Battery:	18V
Length:	400mm

Features:

- Robust plastic housing with rubber grip handle
- Open C crimping head, 360° rotatable with interchangeable dies and wide crimping
- Maximum operating speed with high performance motor, with
- Quick motor stop function for high user safety
- Manual retraction when crimp is complete
- Rocking triggers system to prevent improper usage
- Pressure safety system to prevent over pressure failures
- Energy saving function by stopping tool after 10 min unused
- USB connection for data analysis & preventive maintenance with dedicated software
- Handling ring for safety cable or transportation

BPP1303B1320 - Battery operated pistol grip dieless crimping tool

Crimping Range:	6mm ² - 400mm ² CU/AL
Weight:	7kg
Battery:	18V
Length:	430mm
Accessories:	Case and charger

Features:

- Robust plastic housing with rubber grip handle
- Open C crimping head, 360° rotatable with interchangeable dies and wide crimping
- Quick motor stop function for high user safety
- Manual retraction when crimp is complete
- Rocking triggers system to prevent improper usage
- Pressure safety system to prevent over pressure failures
- Energy saving function by stopping tool after 10 min unused
- USB connection for data analysis & preventive maintenance with dedicated software

BCP045G - Battery operated cutting tool with pistol grip, guillotine type

Crimping Range:	40mm ² - 180mm ² CU/AL
Weight:	8.5kg
Battery:	18V
Length:	510mm

Features:

- Carry Case included
- New reinforced blades
- Identical blade & counter blade
- Interchangeable blades
- Rotative head - 220°
- Locking pin

BCP040G - Battery operated cutting tool with pistol grip

Crimping Range:	40mm ² - 180mm ² CU/AL
Weight:	7.4kg
Battery:	18V
Length:	480mm

Features:

- Carry Case included
- New reinforced blades
- Identical blade & counter blade
- Interchangeable blades
- Rotative head - 180°
- Locking pin

SBH20S2K - 18V 1.5AH Brushless Li-Ion hammer drill


Measurements:	210mm x 208mm
Weight:	1.6kg
Battery:	Li-Ion
Voltage:	18V
Max Torque (Nm):	55
No Load Speed (rpm)	0-430/0-1700
Chuck Capacity (mm)	13
Max. Drilling Capacity (wood) (mm)	35
Max. Drilling Capacity (metal)(mm)	13

Features:

- Brushless motor technology for enhanced performance
- 2 Speed motor with forwards and reverse function allows for optimal performance in all applications
- Optimum ergonomic design and rubber grip for superior user comfort
- Twin sleeve clutch collar allows you to set and forget your clutch setting

STDH6513-B9 - 650W 13mm Percussion drill


Measurements:	270mm x 255mm
Weight:	1.75kg
Power Input(W):	650
Max Torque (Nm):	20
No Load Speed (rpm)	0-2800
Chuck Capacity (mm)	1.5-13
Max. Drilling Capacity (wood) (mm)	30
Max. Drilling Capacity (metal)(mm)	13

Features:

- Side handle & rubber grips to provide additional control.
- Lock-on button & Ergonomic hold curve for one hand operation
- Hammer action for drilling into brick and masonry
- Durable chuck prevents the bit from coming loose during operation
- Variable speed control with forward & reverse mode to suit different materials
- Depth guide for making correct measurement

STDH7213K-B9 - 720W 13mm Percussion drill

Measurements:	240mm x 203mm
Weight:	2.4kg
Power Input(W):	720
Max Torque (Nm):	22
No Load Speed (rpm)	0-3000
Chuck Capacity (mm)	1.5-13
Max. Drilling Capacity (wood) (mm)	32
Max. Drilling Capacity (metal)(mm)	13

Features:

- High working efficiency due to excellent rotary and impact speed
- Kit box for safe storage of power tool and all accessories
- Hammer action for drilling into brick and masonry
- Lock-on button for one hand control and user safety
- Durable chuck prevents the bit from coming loose during operation
- Adjustable variable speed dial allows to pre-set speeds for more control
- Depth guide for making correct measurement
- Durable metal gear housing for a long life



STDR5510 - 550W 10mm Rotary drill

Measurements:	240mm x 203mm
Weight:	1.55kg
Power Input(W):	550
Max Torque (Nm):	14
No Load Speed (rpm)	0-2800
Chuck Capacity (mm)	1.5-10
Max. Drilling Capacity (wood) (mm)	25
Max. Drilling Capacity (metal)(mm)	10

Features:

- Durable powerful motor for excellent performance & long durability
- Adjustable variable speed dial allows pre-set speeds for more control
- Durable chuck prevents the bit from coming loose during operation
- Ergonomic hold curve for easy one hand operation
- Integrated belt clip allows tool to be carried while freeing up both hands
- Lock-on button for one hand control and user safety
- Reverse function for convenient screw driving
- Key holder to securely maintain chuck key

STGL2023-B9 - 2000W 230mm Large angle grinder

Measurements:	525mm x 133mm
Weight:	6kg
Power Input (W):	2000
Max. Disc Diameter (mm):	230
Spindle Thread	M14
No Load Speed (rpm)	6500

Features:

- Multi-angle rotation gear box allows for ideal balance in surface and edge grinding applications
- Two step safety switch prevents accidental starts
- Powerful motor designed for professional applications
- Spindle lock for quick and easy change of accessories

STGL2223-B9 - 2200W 230mm Large angle grinder

Measurements:	540mm x 133mm
Weight:	6kg
Power Input (W):	2000
Max. Disc Diameter (mm):	230
Spindle Thread	M14
No Load Speed (rpm)	6500

Features:

- Multi-angle rotation gear box allows for ideal balance in surface and edge grinding applications
- Two step safety switch prevents accidental starts
- Powerful motor designed for professional applications
- Spindle lock for quick and easy change of accessories

STPT600-B9 - 600W variable speed blower

Measurements:	470mm x 225mm
Weight:	1.7kg
Power Input(W):	600
Air Flow (m3/min)	3.5
No Load Speed (rpm)	16000

Features:

- Suction mode used in restricted application areas
- Lock-on button for one hand control and user safety
- 600W powerful motor for higher tool performance
- 2 Tools in 1: Blower and vacuum cleaner
- Light and compact design for ease of handling
- Optimized fan structure for better air flow
- Variable speed option for easy control of airflow
- Rubber nozzle for greater flexibility during work

STGS7115-B9 - 710W 115mm Small angle grinder


Measurements:	310mm x 105.5mm
Weight:	1.9kg
Power Input(W):	710
Max. Disc Diameter (mm)	115
Spindle Thread	M14
No Load Speed (rpm)	11000

Features:

- Optimized air vents for best cooling
- Powerful motor for carrying out a large variety of tasks
- Compact housing shape design allows comfortable gripping
- Long endurance by high quality commutator & durable carbon brush
- Spindle lock for quick and easy change of accessories
- Spiral bevel gears provide less vibration, lower noise level and longer life span
- Burst proof guard ensures maximum user safety
- On/Off slide switch for one hand control and user safety

STGS9115-B9 - 900W 115mm Small angle grinder


Measurements:	310mm x 101mm
Weight:	2.2kg
Power Input(W):	900
Max. Disc Diameter (mm)	115
Spindle Thread	M14
No Load Speed (rpm)	11000

Features:

- Optimized air vents for best cooling
- Powerful motor for carrying out a large variety of tasks
- Compact housing shape design allows comfortable gripping resulting in superior ergonomics
- Long endurance by high quality commutator & durable carbon brush
- Spindle lock for quick and easy change of accessories
- Spiral bevel gears provide less vibration, lower noise level & longer life span
- Burst proof guard ensures maximum user safety

STHM5KS-B9 - 5kg SDS-MAX chipping hammer


Measurements:	476mm x 238mm
Weight:	6.3kg
Power Input(W):	1010
Impact Energy (J):	8.5

Features:

- ON/OFF rocker switch for hassle-free continuous usage
- Carbon brush access caps for easy access and quick change
- SDS Max chuck suitable for most common accessories
- Class-leading 1010W motor delivers outstanding performance for light demolition, surface preparation or chiseling
- Large hammer mechanism delivers extreme durability and excellent concrete breaking performance
- Anti Vibration handle with spring delivers extremely low vibration and more comfort
- Rubber grip handle improve user comfort lowering fatigue during extended use
- 360 Degree side handle maintains user comfort in any application

**STHR202K-B9 - 20mm 620W 2 mode
SDS-PLUS hammer**


Measurements:	330mm x 210mm
Weight:	2.8kg
Power Input(W):	620
Max. Drill Capacity (concrete) (mm)	20
No Load Speed (rpm)	0-1250
Max. Drilling Capacity (wood) (mm)	25
Max. Drilling Capacity (metal) (mm)	13
Impact Energy (J)	1.34

Features:

- Ideal for drilling anchor and fixing holes into concrete and masonry from up to 20 mm in diameter
- 2 Modes: Rotary drilling and hammer drilling
- Safety clutch eliminates sudden high-torque reaction should the bit jam
- Electronic variable speed for total control in any application
- Ergonomic rubber grip handle for improved comfort in long duration usage
- Rounded ergonomic industrial design allows easy and comfortable handling in any application
- Depth guide for drilling accurate pre-determined depths

**STHR223K-B9 - 22mm 720W 3 mode
SDS-PLUS hammer**


Measurements:	363mm x 217mm
Weight:	3.0kg
Power Input(W):	720
Max. Drilling Capacity (concrete)(mm)	22
No Load Speed (rpm)	0-980
Max. Drilling Capacity (wood)(mm)	30
Max. Drilling Capacity (metal) (mm)	13
Impact Energy (J)	2

Features:

- Ideal for drilling anchor and fixing holes into concrete and masonry from up to 22mm in diameter
- Safety clutch eliminates sudden high-torque reaction should the bit jam
- Electronic variable speed for total control in any application
- Depth guide for drilling accurate pre-determined depths
- 3 Modes: Rotary drilling, hammer drilling and chiseling mode for all job-site applications

STHR263K-B9 - 26mm 800W 3 mode SDS-PLUS hammer


Measurements:	375mm x 270mm
Weight:	3.3.kg
Power Input (W):	800
Max. Drilling Capacity (concrete)(mm):	26
No Load Speed (rpm)	0-1050
Max. Drilling Capacity (wood)(mm)	30
Max. Drilling Capacity (metal)(mm)	13
Impact Energy (J)	2.7

Features:

- Electronic variable speed for total control in any application
- Depth guide for drilling accurate pre-determined depths
- 3 Modes: Rotary drilling, hammer drilling and chiseling mode for all job-site applications
- Safety clutch eliminates sudden high-torque reaction should the bit jam
- Ideal for drilling anchor and fixing holes into concrete and masonry from up to 26mm in diameter

DCF887NT - 18V Body only brushless impact driver



Voltage:	18V
Max Torque:	203Nm
Power Output(W):	250
No Load Speed:	0-2300
Max. Bolt Diameter:	M16
Measurements:	147 x 240
Weight:	1.62kg

Features:

- Ultra compact, light weight design ideal for use in confined spaces
- All metal gearing for efficient power transmission and long tool life
- Aluminium front housing provides greater heat dispersion increasing motor life
- 1/2 (12.7mm) square socket retention for effective, efficient torque delivery in application.

DCH25133K-ZA - 1" SDS Pistol grip hammer



Amps:	7
Impact Energy:	2.6 joules
Chipping:	Yes
No Load Speed:	0-1500
Optimal Concrete Drilling	5/32 - 5/8 IN
Vibration Measurements:	15.4 m/s ²
Weight:	5.7 LBS

Features:

- 2.6 joules of impact energy for fast drilling and chipping speed
- 8.0 amp high performance motor
- Rotating brush ring delivers full speed/torque in forward & reverse
- Integral clutch reduces sudden, high torque reactions if bit jams
- Compatible with D25301D drilling dust extraction system.

DWD024-B5 - 13mm percussion drill 220V



Power Output(W):	302
Max Torque(Nm):	8.6
Chuck Capacity:	1.5-13mm
No Load Speed:	0-2800
Max Drilling Capacity (Wood)	25
Max Drilling Capacity (steel)	13
Max Drilling Capacity (concrete)	16mm
Weight:	1.82kg

Features:

- Low weight ensures the drill is easy to use & it reduces user fatigue
- Compact design enables comfortable use & allows access to tight spaces
- An excellent power to size ratio results in a powerful, durable drill in a compact size
- Trigger sensitive variable speed switch allows a user to drill slowly for precision accuracy when starting to drill a hole

D25033C-ZA - 22mm SDS-PLUS hammer



No Load Speed:	0-1550 min-1
Single Impact Energy (NON EPTA)	2.1 J
Max. Drilling Range Steel(mm):	13
Max. Drilling Range Wood (mm):	30
Max. Drilling Range Concrete (mm):	22
Weight:	2.5kg
Power Input:	710W
Voltage:	220-240 V

Features:

- Rotation-stop for light chiselling applications in brick, soft masonry and occasionally concrete. Impact-stop for drilling in wood, steel, ceramic and screwdriving applications
- Large hammer mechanism delivers high performance with low stress to the critical components resulting in better durability
- Mechanical clutch eliminates sudden high-torque reaction should the bit jam
- Electronic variable speed for total control in any application

DCD996P2-QW - 5Ah - 20V Max XR Lithium ION brushless 3-speed hammerdrill kit

DCD996D2-QW - 2Ah - 20V Max XR Lithium ION brushless 3-speed hammerdrill kit

	DCD996P2-QW	DCD996D2-QW
Voltage:	18V	18V
Max Torque:	95Nm	80Nm
Power Output:	820W	650
No Load Speed:	0-450/1300-2000rpm	
Max. Drilling Capacity (wood) (mm):	55	50
Max. Drilling Capacity (metal)(mm):	15	13
Max. Drilling Capacity (masonry)	16	16
Weight:	2.1kg	2.13kg

Features - DCD996P2-QW:

- NEW Automatic high speed hammer drill driver at 38,250 BPM increasing users masonry drilling speed of application
- NEW 3 Position LED torch, High/Medium/Low settings with High output 20min LED delay lighting up your work place
- Electronic Clutch with 11 position adjustable torque control for optimised precision when screw driving
- Includes a TSTAK Compatible Kitbox to organise you tools and accessory storage
- 13mm ratcheting keyless chuck with automatic spindle lock for fast bit changes
- Multi voltage charger for use with 18V, 14.4V and 10.8V XR Li-Ion battery packs



Features - DCD996D2-QW:

- Tough 3 speed all metal transmission for increased runtime & longer tool life
- Electronic Clutch with 11 position adjustable torque control for optimized precision when screw driving
- 13 mm ratcheting keyless chuck with automatic spindle lock for fast bit changes
- Efficient intelligent trigger allowing total control over all applications
- Foot LED with delay feature for improved visibility and flashlight functionality
- Li-Ion battery packs allows for superior insertion and removal with state of charge indicator
- Multi voltage charger for use with 18V; 14.4V and 10.8V XR Li-Ion battery packs

DCD796P2-QW2 - 5Ah - 18V XR Li-Ion Brushless compact hammer drill driver

DCD796D2-QW2 - 2Ah - 18V XR Li-Ion Brushless compact hammer drill driver

	DCD796P2-QW2	DCD796D2-QW2
Voltage:	18V	20V
Max. Torque:	70Nm	70NM
Power Output:	460W	460W
No Load Speed:	0-550/2000	0-550/2000
Max. Drilling Capacity (wood)(mm)	40	40
Max. Drilling Capacity (metal)(mm)	13	13
Max. Drilling Capacity (masonry)	13	13
Weight:	1.8kg	2.1kg

Features:

- Brushless Motor Technology for excellent efficiency
- Two speed all metal transmission for increased runtime and longer tool life
- Drill Driver and Hammer feature for multiply applications
- NEW 3 Position LED torch, High/Medium/Low settings with High output 20min LED delay lighting up your work place
- Li-Ion battery packs allows for superior insertion and removal with state of charge indicator
- Multi voltage charger for use with 18V, 14.4V and 10.8V XR Li-Ion battery packs



DCG412NT-XJ - 18V angle grinder



Voltage:	18V
Max Disc Diameter:	125mm
Power Output(W):	405
No Load Speed:	7000
Spindle Thread	M14

Features:

- Powerful & Highly Efficient PM58 DEWALT fan cooled motor with replaceable brushes, delivers up to 7000 rotations per minute for fast cutting and grinding applications
- Steel cut spiral bevel gears provide highest level of durability and low vibration, increasing user productivity
- Low profile jam pot gear case improves gear durability and ergonomics
- Quick change wheel release allows quick and easy wheel removal

DWE492-ZA - Large angle grinder



Power Input	2200
Max. Disc Diameter:	230
Spindle Thread:	M14
No Load Speed:	6600
Weight:	5.2kg
Measurement:	490 x 151

Features:

- Abrasion protected motor for increased durability
- Two position side handle allows the user to optimise handle position to give maximum comfort
- Spindle lock for quick wheel changes

DWE4050-ZA - 115mm 800W angle grinder



Power Input(W):	800
No Load Speed:	11800
Max Disc Diameter:	115mm
Spindle Thread:	M14
Weight:	1.8kg
Measurements:	270 x 80

Features:

- Small girth allows comfortable gripping resulting in superior ergonomics
- Independent box and spring brush holder design increases brush life
- The low profile gear case allows access in confined areas
- Fully leaded stator windings for increased motor durability
- 100% Ball bearing design increases efficiency and durability
- Pop off brushes protect the armature from damage at the end of brush life resulting in greater motor durability
- Top positioned spindle lock allows maximum depth of cut
- Abrasion protected motor for increased durability

EPC14CA - 18V Cordless drill

Voltage:	18V
Max Torque:	12.1Nm
Power Output(W):	250
No Load Speed:	0-750rpm
Chuck size:	10mm
Weight:	kg

Features:

- 24 torque clutch - For perfect screwdriving into a variety of materials with different screws sizes
- Spring Loaded Slide Pack Battery System - For quick and easy battery change and a more secure fit
- Reverse switch for added versatility
- Variable speed - For ultimate finger tip control for all drilling applications

BDCDD12 - 10.8V Ultra Compact Lithium-ion Drill

Voltage:	10.8V
Max Torque:	26Nm
Power Output(W):	250
No Load Speed:	0-550rpm
Chuck size:	10mm
Weight:	kg

Features:

- Ultra compact and lightweight - ideal for use in those hard to reach confined areas.
- Spring loaded battery system for quick and simple battery change and a more secure fit.
- Lithium Ion battery holds over 80% of its charge over 90 days whilst idle. No need to charge unit before each use.
- Provides precise control for drilling into wood, metal, plastic and all screwdriving tasks.
- Variable speed for ultimate fingertip control for all drilling and screwdriving applications.
- LED worklight illuminates the work area when drill is in use.
- Anti slip soft grip which provides comfort when drill is in use.

BDCDC18 - 18V Drill Driver with 200mA Charger and 1 battery

Voltage:	18V
Max Torque:	30Nm
No Load Speed:	0-650rpm
Chuck size:	10mm
Weight:	kg

Features:

- The power and speed to drill into wood, metal and for all screwdriving tasks.
- 10 position clutch provides precise control for drilling into wood, metal, plastic and all screwdriving tasks.
- Lithium Ion battery holds over 80% of its charger over 90 days whilst idle. No Need to charge unit before each use.
- Variable speed for ultimate finger tip control for all drill and screwdriving applications.
- Spring loaded battery system for quick and simple battery change and a more secure fit.
- Anti slip soft grip which provides comfort when drill is in use.



BDCIM18N - 18V platform - Impact drill


Voltage:	18V
Max Torque:	155Nm
Power Output(W):	250
No Load Speed:	0-3000rpm
Chuck size:	6mm
Weight:	kg

Features:

- Spring Loaded Slide System is Durable & Prevents dust ingress
- Durable Metal Gear Casing.
- Compact, Lightweight & Easy to use.
- Cordless Power & convenience. Part of the 18V Lithium-Ion System.
- Impact Driver: 155Nm Torque, For effortless driving & removal of screws & bolts.
- Anti slip soft grip which provides comfort when using the drill.

BDCDD18N - 18V drill


Voltage:	18V
Max Torque:	28Nm
Power Output(W):	250
No Load Speed:	0-650rpm
Chuck size:	10mm
Weight:	kg

Features:

- Spring loaded slide pack battery system for quick and easy battery change and a secure fit.
- 10 torque settings for perfect screwdriving into a variety of materials with different screw sizes.
- The power and speed to drill into wood, metal and for all screwdriving tasks.
- Cordless Power & convenience. Part of the 18V Lithium-Ion System.
- Compact & Lightweight, For greater comfort and control in use.
- Variable speed for ultimate fingertip control for all drilling and screwdriving applications.
- Anti slip soft grip which provides comfort when using the drill.

BDCH188N - 18V Hammer drill

Voltage:	18V
Max Torque:	28Nm
Beats per minute:	20250bpm
No Load Speed:	0-1350rpm
Chuck size:	10mm
Weight:	kg

Features:

- Spring loaded slide pack battery system for quick and easy battery change and a secure fit.
- 11 torque settings for perfect screwdriving into a variety of materials with different screw sizes.
- Variable speed for ultimate fingertip control for all drilling and screwdriving applications.
- The power and speed to drill into masonry, steel and wood.
- Cordless convenience, great performance & easy to use.
- Cordless Power & convenience. Part of the 18V Lithium-Ion System.
- Compact & Lightweight, For greater comfort and control in use.
- Anti slip soft grip which provides comfort when using the drill.



KR554CRES - 550W Percussion hammer drill

Power Output(W):	550
Beats per minute:	47600bmp
Chuck Size:	13mm
No Load Speed:	0-2800rpm
Max Drilling Capacity (Wood)	20mm
Max Drilling Capacity (steel)	10mm
Max Drilling Capacity (masonry)	10mm
Weight:	

Features:

- 550W power suitable for home drilling
- Hammer action suitable for drilling into masonry
- Spindle lock for easy bit change and maximum accessory grip
- Variable speed offers more control and is essential for screwdriving
- 13mm, high quality keyless chuck
- Secondary handle to provide additional control
- Lock on button for greater comfort

KR5010V - 550W Variable speed hammer drill

Power Output(W):	550
Beats per minute:	47600bmp
Chuck Size::	10mm
No Load Speed:	0-2800rpm
Max Drilling Capacity (Wood)	20mm
Max Drilling Capacity (steel)	10mm
Max Drilling Capacity (masonry)	10mm
Weight:	

Features:

- 10mm keyed chuck
- Hammer drill or drill/driver selector allows drilling into a variety of materials
- Lock-on switch for continuous use

CS3652LC - 3.6V Lithium Screwdriver with Right Angle Attachment

Power rating	3.6V
Max. Torque:	5.5Nm
Chuck Size::	6.25mm
No Load Speed:	0-180rpm
Weight:	

Features:

- Compact size enables easy screwdriving in all areas.
- LED work light for visibility in dark areas, hidden corners, edges and inside furniture.
- Right Angle Attachment allows for 8 pivoting positions to access all areas.
- 1.5Ah battery which once charged holds it charge for up to 18 months when idle.
- 5.5Nm of torque provides optimum force and performance for all screwdriving tasks.

CD714REK - 710W Percussion hammer drill


Power Output(W):	710
Max Torque(Nm):	4.5Nm
Chuck Size::	13mm
No Load Speed:	0-2800rpm
Max Drilling Capacity (Wood)	25mm
Max Drilling Capacity (steel)	13mm
Max Drilling Capacity (masonry)	13mm
Weight:	

Features:

- 710W power suitable for home drilling
- Hammer action suitable for drilling into masonry
- Variable speed offers more control and is essential for screwdriving
- 13mm, high quality keyed chuck
- Secondary handle to provide additional control
- Lock on button for greater comfort

CD714CRES - 710W VSR keyless hammer drill


Power Output(W):	710
Beats per minute:	47600bpm
Chuck Size::	13mm
No Load Speed:	0-2800rpm
Max Drilling Capacity (Wood)	25mm
Max Drilling Capacity (steel)	13mm
Max Drilling Capacity (masonry)	13mm
Weight:	

Features:

- 710W power suitable for home drilling
- Hammer action suitable for drilling into masonry
- Spindle lock for easy bit change and maximum accessory grip
- Variable speed offers more control and is essential for screwdriving
- 13mm, high quality keyless chuck
- Secondary handle to provide additional control
- Lock on button for greater comfort

KR504 - 500W Percussion hammer drill


Power Output(W):	500
Beats per minute:	47600bpm
Chuck Size::	10mm
No Load Speed:	0-2800rpm
Max Drilling Capacity (Wood)	20mm
Max Drilling Capacity (steel)	10mm
Max Drilling Capacity (masonry)	10mm
Weight:	

Features:

- 500W power suitable for home drilling
- Hammer action suitable for drilling into masonry
- 10mm, high quality keyed chuck
- Lock on button for greater comfort

BDGL2223 - 2200W Large angle grinder

Weight:	kg
Power Input (W):	2200
Max. Disc Diameter (mm):	230
Spindle Thread	M14
No Load Speed (rpm)	6500rpm

Features:

- 2200 Watt Powerful Motor with high working efficiency, designed for heavy duty job.
- Longest Durability in its class (450 Hrs).
- Ergonomic design for easy control & long time usage

Includes

- 1 Guard
- 1 Flange set
- 1 Spanner
- 1 Handle

KG915 - 900W 115mm small angle grinder

Weight:	kg
Power Input (W):	900
Max. Disc Diameter (mm):	115mm
Spindle Thread	M14
No Load Speed (rpm)	10000rpm

Features:

- 115mm disc size - useful when working in confined spaces
- 900W motor provides an ideal balance between power, weight and size
- 2 position side handle for additional control and safety
- Spindle lock makes accessory changing quick and easy
- Tool free safety guard makes guard adjustment quick and easy
- Lock on switch assists with comfort and control

KG8215 - 820W small angle grinder

Weight:	kg
Power Input (W):	820
Max. Disc Diameter (mm):	115mm
Spindle Thread	M14
No Load Speed (rpm)	12000rpm

Features:

- Cable
- Slider switch
- Tool free guard
- Body grip
- Spindle lock button
- Side handle (2 positions)

KX1650 - 1750W Heat gun


Power Output(W):	1750
Heat settings:	2
Temperature range:	460 - 600°C
Air flow:	570 / 740 l/min
Weight:	

Features:

- Ideal for stripping paint, varnishes & adhesives
- Built in stand for hands free applications and cooling
- 2 heat & airflow settings for more control in different applications

KX2200K - 2000W High performance heat gun


Power Output(W):	2000
Heat settings:	Variable
Temperature range:	65 - 645°C
Air flow:	360 / 720 l/min
Weight:	

Features:

- Powerful 2000W, 2 speed heat gun with variable heat control giving maximum control in all heat gun applications
- Complete kit including 8 accessories & kit box for all paint & varnish removal tasks
- Powerful heat gun kit for all applications, ideal for stripping paint, varnish, adhesives and a variety of other applications

MT300KA - Oscillating Tool with Kitbox and Accessories

Power Output(W):	300
Speed:	Variable
Tool free accessory fitment:	Yes
Weight:	

Features:

- Get the job done faster with the new Oscillating Multi Tool
- Variable Speed provides optimum control on all tasks
- Slim back handle design & Soft Grip provides greater comfort for longer use
- Robust Jam pot design provides durability and easy servicing
- Sanding platen includes Integrated Dust Extraction, for a cleaner working environment
- Tooled Accessory Adapter provides additional versatility to fit Bosch, Einhell & Worx Accessories in a tooled manner
- Superlok(TM) Tool Free Accessory change, Easier than competition, Faster Job completion, no Allen key required!

Includes

- 300w Oscillating Tool
- 1x Sanding Pad With integrated dust extraction
- 1x Precision Plunge Cut Blade
- 1x Segmented Flush Cut Blade
- 1x Rigid Scraper Blade
- 1x Flexible Scraper Blade
- 6x Sanding Sheets 60, 80 & 120 grit
- Tooled Accessory Adapter to fit Bosch, Einhell & Worx Tooled Accessories



MT350K - Corded Multievo™ Multi-Tool with Drill Driver Head

Weight:	kg
Power Input (W):	300
Speed:	0-700 rpm
Spindle Thread	M14
No Load Speed (rpm)	6500rpm

Features:

- The ultimate corded drill driver with the patented ability to convert into different power tools.
- This version of the Multievo™ multi-tool starter kit comes with a drill driver head which provides speed and strength to drill the largest holes (25mm) in wood, and metal (10mm). Additional power tool heads in the Multievo™ system can be bought separately.
- 10 torque settings for perfect screwdriving into a variety of materials with different screw sizes.
- Variable speed for ultimate fingertip control for all drilling and screwdriving applications.

Includes

- Double ended screwdriver bit
- Kitbox

MTS7 Multievo attachment
- Trimsaw



MTS12 Multievo Scissor



MTRS10 Multievo
Reciprocating saw



MTNF9 Multievo Inflator



MTRT8 Multievo Router



MTIM3 Multievo Impact
drill



MTSA2 Multievo Sander



MTJS1 Multievo Jigsaw



MTHD5 Multievo Hammer
drill



MTOS4 Multievo Oscillator



POWERLOCK Short tapes



STHT33238-8	Tape Powerlock 3m x 13mm
STHT33194-8	Tape Powerlock 5m x 19mm
STHT33168-8	Tape Powerlock 8m x 25mm
33-448	Tape Powerlock 10m x 23mm

Features:

- Compact case - easier to hold & Belt clip for ease of storage
- Tru zero end hook moves to compensate for accurate inside and outside measurements
- Mylar® coated 19mm blade is up to 10 times more resistant to abrasion
- Highly resistant chrome plated metal case
- Class II, Ribbon-blocking button

TYLON short tapes



STHT30687-8	Tape Tylon 3m x 13mm
STHT30697-8	Tape Tylon 5m x 19mm
STHT30657-8	Tape Tylon 8m 25mm

Features:

- Tylon coated blade provides anti-glare reading
- Soft touch case
- Tru-Zero hook for accurate inside and outside measurements

SHORT TAPES



STHT3027-8	Tape Basic short 3m x 13mm
STHT30279-8	Tape Basic short 5m x 19mm

Closed-case fibreglass blade long tape



STHT34260-8	Tape Fivreflass C/Case 15m
STHT34296-8	Tape Fibreglass C/Case 20m - 6
STHT34297-8	Tape Fibreglass C/Case 30m - 6
STHT34298-8	Tape Fibreglass C/Case 50m - 6

Features:

- High-impact case for durability
- Reinforced fibreglass blade for accurate measurements
- High visibility case make it easy to detect on the job site

Classic box-beam levels



STHT43102-8	Level Classic - Box 400mm
STHT43103-8	Level Classic - Box 600mm
STHT43104-8	Level Classic - Box 800mm
STHT43105-8	Level Classic - Box 1000mm

Features:

- Equipped with 2, 3 or 4 unbreakable vials depending on length
- Easy to clean epoxy finish for long life
- Solid block vials guaranteed against breakage and leakage for 5 years
- Ribbed tubular box section aluminium body for strength and rigidity
- Machined on bottom surface for maximum accuracy (up to 1200mm level)
- Supporting sides milled up to 1200mm and treated with epoxy for easy cleaning

Foam-cast levels

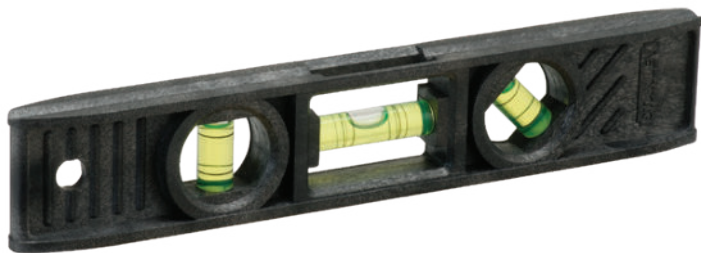


1-42-474	Level Foamcast 300mm
1-42-475	Level Foamcast 450mm
1-42-476	Level Foamcast 600mm
1-42-471	Level Foamcast 1200mm

Features:

- I-beam profile
- Injection moulded ABS body, lightweight and shock resistant
- 3 high visibility tubular vials: level, plumb and 45°
- Convenient metric graduation on top face
- Accuracy ± 2 mm/m
- Robust and non-deformable

ABS magnetic AMS torpedo level



STHT42264-8

Torpedo level 228mm 3 vial

Features:

- 3 tubular vials: 1 level, 1 plumb and a 45° vial
- Lightweight injection moulded ABS body for strength
- 200mm, 3 vials
- Available in non magnetic and magnetic

ABS ABS torpedo level



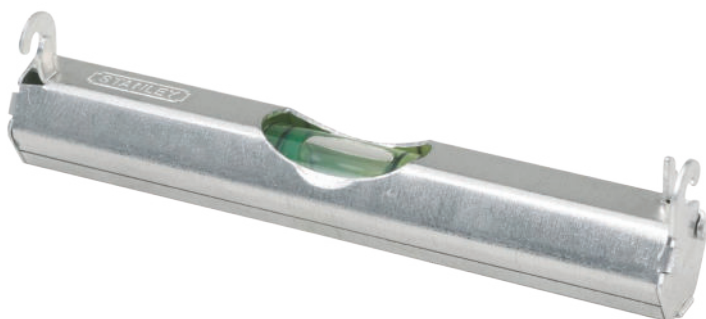
0-42-294

Level Torpedo ABS 203mm 3 Vial

Features:

- High visibility from above because of top-reading vial
- High-impact ABS body to provide durability
- Tinted 360° vials make measurements easy on the eyes
- Tinted 360° vials to provide distinct readability
- Top-reading feature allows visibility from above

Line levels



42-287

Level Line 83mm Alum

Features:

- Aluminum construction is lightweight and durable with flat base for surface leveling.
- Special hang hooks grip line which enables level to slide freely for positioning
- 360 degree vial for easy readability.
- Hexagon shape

Chalk Lines



STHT47443-8

1

Chalk Line Reel Set ABS 30m

STHT47440-8

2

Chalk Line Reel ABS 30m

STHT47403-8

3

Chalk Line Refill 115g Blue

STHT47404-8

4

Chalk Line Refill 115g Red

Features:

- High impact ABS case for durability
- Sliding door for quick and easy refill
- Stainless steel end hook for added durability and rust prevention

Squares 501-A



E-46038

Square 501-A 200mm/8"-10

E-46039

Square 501-A 250mm/10"-10

E-46040

Square 501-A 300mm/12"-10

Features:

- Hard wearing
- High impact ABS for long life

Square prof steel



E-46530

Square prof steel 150mm/6"-6

E-46532

Square prof steel 200mm/8"-6

E-46534

Square prof steel 250mm/10"-6

E-46536

Square prof steel 300mm/12"-6

Features:

- Anti corrosion coating

Square combination 300mm multiuse



2-46-017

Square combination 300mm multiuse

Features:

- Lightweight and durable metal body with 3 machined faces for accuracy
- Easy to read, long lasting engraved blade with 360° vial for all round visibility
- Scriber fitting for accuracy & convenience
- Can be used as a try and mitre square, depth or height gauge and spirit level
- Synthetic heel for light weight
- Integrated flask
- Graduation in mm

Square combination 300mm H/D STL-3



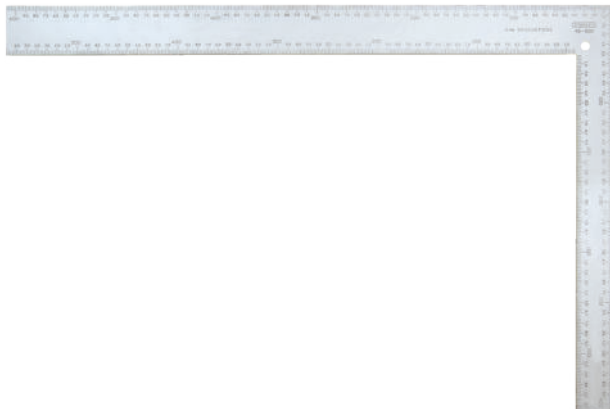
2-46-143

Square combination 300mm H/D STL -3

Features:

- Metric / imperial graduations
- High visibility reading etched and coated blade - rust resistant
- High quality brass nut and scriber fittings for long life
- 360° vial for all round visibility
- Can be used as a try and mitre square, depth or height gauge and spirit level
- Precision die cast body with 3 precision machined faces for accuracy

Square Builders/roofing



1-45-530

Square builders/roofing 600x400mm

Features:

- Face graduated every 2mm, reverse of blade every 1/8" th for detailed work
- Reverse reading scale and crisply embossed graduations for easy reading
- Steel square with buffed finish and protective lacquer coating for rust resistance



Laser Level

STHT1-77340	Cubix Cross-Line lasers
Levelling Type	Self
Accuracy	+/- 0.8mm@1m
Compensation Range	+/- 4°
Working Range	8m
Battery Life	20 hrs
Battery Type	2 x AA (1.5V)
Beam Colour	Red
Number of Lines	2
Line Direction	Vertical & Horizontal
Laser Class	Class 1
Laser Diode	635nm
Manual Mode	Yes



Features:

- Quicklink™ bracket system supplied
- Integrated slots in housing for quick connection to accessory bracket
- Visual warning / indication for "out of level" when in "self leveling mode"
- Single laser diode split with lens
- Self leveling cross line laser
- Can also be flipped on its back for ceiling application use

10-189C - Spring-back retractable knife



Features:

- Blade storage inside the handle
- Contoured handle with diagonal ribs for slip-resistant grip
- Zinc alloy body, very strong but lightweight
- The blade remains extended as long as the thumb is kept on the push button.
- Blade retracts automatically when the button is released
- Supplied with special round nose heavy duty blade for ultimate safety
- Safety knife with auto retracting blade
- Interlock nose locking system for greater safety during cutting
- Blade Extension 17 mm

0-10-088 - Light weight retractable knife



Features:

- No tools required to change the blade for quicker blade change
- Antishock resistant ABS body both lightweight and extremely strong
- Metal blade carrier carriage
- Fine adjustment allows 5 blade positions
- Rapid blade changing
- Knife with retractable blade

10-810 - Quickslide pocket retractable utility knife



Features:

- One handed operation blade slider – extends the blade easily and quickly
- Metal belt clip for convenient storage
- Push down and slide safety feature – ensures the blade is not accidentally extended
- All metal construction – solid, reliable and long lasting
- Pocket size for convenience

9-10-813 - Quickslide sport utility knife



Features:

- Zinc blade slider for durability and strength
- No tools needed to change utility blade – quick and easy to replace blades
- Interlock mechanism allows only one blade to be extended at any one time - for safety
- Thumb slider - for easy operation of utility blade
- Positive spine lock fixes blade when opened - for safe operation
- Separate traditional utility blade ideal for professional heavy duty cutting
- 3" / 75mm serrated blade for garden, hobby, and outdoor use
- Comes with holster and blades for better value

STHT10266-8 - Professional TP snap-off blade knife - 9mm

STHT10264-8 - Professional TP snap-off blade knife - 18mm



Features:

- Bi-material TPR handle with soft grip or full ABS version for durability
- Dial lock or auto slide lock for convenience and safety
- Ergonomic design of thumb pad & neck down create comfortable grip & control
- Fits application needs from light to heavy duty and specially designed to improve cutting performance
- Removable blade snapper in the knife cap
- Storage of spare blades

2-10-199 - Classis 199 fixed blade utility knife



Features:

- Over lapping nose blade locking system for greater safety during cutting
- Strong zinc alloy body with a grooved surface for comfortable, assured grip
- Blade holder inside the handle for safe storage
- Knife supplied with 3 blades

0-10-480 - Dynagrip cartridge snap-off blade knife - 18mm

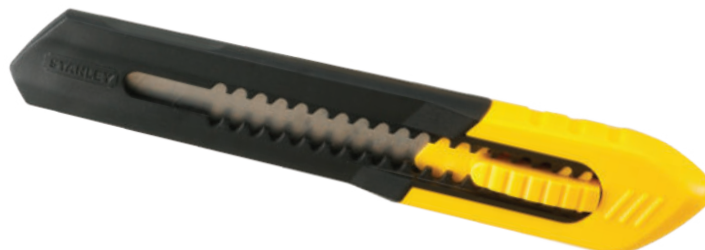


Features:

- Click action slider indicates when new blade auto feeds into position
- Storage for up to 6 blades

STHT10151-8 - Quick-point snap-off blade knife - 9mm

STHT10150-8 - Quick-point snap-off blade knife - 18mm



Features:

- Blade snapper included in handle for safety
- Multi-position push button for quick, easy use
- Two part moulded body that allows rapid blade changing.

Knife blades

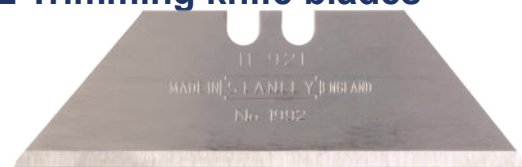


11-931	Extra Heavy Duty Knife Blades - 5 Pack
11-931A	Extra Heavy Duty Knife Blades - 10 Pack
0-11-911	1992 Trimming Knife Blades - 5 Pack
1-11-916	1992 Trimming Knife Blades - 20 Pack
1-11-911	1992 Trimming Knife Blades - 100 Pack
11-921T	1992 Trimming Knife Blades - 10 Pack Heavy Duty

Features:

- Ideal for carpet, vinyl & any other material requiring a stiffer & stronger blade
- The original and best heavy duty, general purpose blade - 0.65mm thick
- 2 cutting positions for a variety of applications, 2 point reversible blade
- Hardened & tempered utility blade for high sharpness & long life
- Blades fit all standard Stanley knives

1992 Trimming knife blades



0-11-911	1992 Trimming Knife Blades - 5 Pack
1-11-916	1992 Trimming Knife Blades - 20 Pack
1-11-911	1992 Trimming Knife Blades - 100 Pack
11-921T	1992 Trimming Knife Blades - 10 Pack Heavy Duty
0-11-921	1992 Trimming Knife Blades - 5 Pack Heavy Duty
1992-20	1992 Trimming Knife Blades - 20 Pack Heavy Duty
1-11-921	1992 Trimming Knife Blades - 100 Pack Heavy Duty
4-11-921	Heavy duty 400 pack

Features:

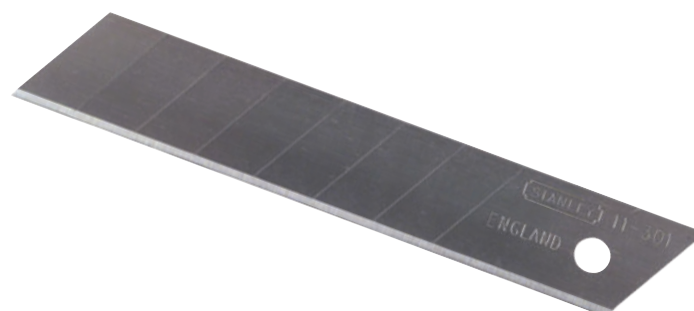
- Ideal for carpet, vinyl and any other material requiring a stiffer and stronger blade
- The original and best heavy duty, general purpose blade - 0.65mm thick
- Can be supplied as 5 units on a card, 10 units in a dispenser or 100 units in bulk
- 2 cutting positions for a variety of applications
- 2 point reversible blade
- Hardened and tempered utility blade for high sharpness and long life
- Blades fit all standard Stanley knives

Quick-point snap-off blades

0-11-300	Quick-point Snap-off Blades - 9mm 10 Pack
0-11-301	Quick-point Snap-off Blades - 18mm 10 Pack

Features:

- Replacement blade dispenser with blade breaker system and storage of used segments
- 0.55mm reinforced thickness - for everyday general PRO use



STHT65199-8 - Cushion grip screwdriver set - Magnetic tip - 4PC



Features:

- Phillips® PH1 x 100mm
- Phillips® PH2 x 150mm
- Slotted 6.5mm x 150mm
- Std Parallel 5mm x 100mm

0-65-242 - Cushion grip screwdriver set - Magnetic tip- 6PC



Features:

- Chrome plated blade ensuring resistance to corrosion
- Soft grip handle for excellent comfort and control
- Tip identification for easy choice of correct screwdriver

0-65-011 - Cushion grip screwdriver set - Magnetic tip - 8PC



Features:

- Soft grip handle for excellent comfort and control
- High grade steel bar reducing the risk of tip breakage
- Chrome plated bar ensuring resistance to corrosion
- Large diameter handle which offers great torque needed for driving wood screws
- Tip identification for easy choice of the correct screwdriver for each screw type
- Nickel plated bar protects from rusting
- Shot blasted magnetic tips ensure a stronger screw pick up

0-68-010 - Ratcheting screwdriver & Multibit set - 10PC



Features:

- Delivered with 10 x 1/4" hex tips
- Pawl mechanism with three positions (right, left, fixed)
- Patented bit storage in handle and cap for ease of visibility, access and security
- Ball bearing system with spring mechanism to facilitate access to the tips
- 3 Position ratchet mechanism
- Rust-proof chrome blade
- Tri lobular handle, bimaterial handle for torque and easy grip
- Parallel 5,6mm. Phillips n°1, 2. Pozi 1,2. Torx T10, T15. Square n°1, 2.

0-66-357 - Stubby screwdriver & Multibit set - 6PC



Features:

- Magnetic tip
- Twist off cap
- Durable ABS plastic
- Internal bit storage

66-052 - Precision screwdriver set - 6PC



Features:

- Slotted: 14; 2.0; 2.4; 3 Phillips: PH0; PH1
- Plastic storage case to easily index the products
- Tough plastic shafts and soft cushion grip allows for greater comfort
- Attractive bi-material handles designed for easy and comfortable grip
- Chrome vanadium steel parts in black oxide finished with hardened tips - HRC 53

4-69-261 - Folding HEX key set - 7PC 1.5mm - 6mm Metric

Features:

- Finish : Black Phosphate
- All keys stored in a size marked order for ease of access
- Silicium steel
- All keys stored in a size marked plastic holder
- 1.5 - 2 - 2.5 - 3 - 4 - 5 - 6 mm

4-69-262 - Folding HEX key set - 7PC 1.5mm - 10mm Metric

Features:

- Finish : Black Phosphate
- All keys stored in a size marked order for ease of access
- Silicium steel
- All keys stored in a size marked plastic holder
- 2.5-3-4-5-6-8-10mm

4-69-263 - Folding TORX key set - 8PC T9 - T40

Features:

- Finish : Black Phosphate
- All keys stored in a size marked order for ease of access
- Finish: burnished
- Silicium steel
- 8 piece Torx configured tips made from high tensile steel
- 9-10-15-20-25-27-30-40

0-69-257 - Clipcase HEX key set - 12PC 1.5mm - 12mm Metric

Features:

- Standard hex keys in high tensile steel for long life
- 1/16, 5/64, 3/32, 7/64, 3/8, 9/64, 5/32, 3/16, 7/32, 1/4, 5/16"

15-166 - Pro steel frame hacksaw 450mm

Features:

- Positive locking mechanism
- Two blade position 90°/55°
- Aluminium handle - 12" blades

E-15200 - Adjustable chrome-frame hacksaw

Features:

- Adjustable rigid steel frame
- Plastic handle for comfort
- Chrome plated

E-20206 - Fixed Hacksaw



Features:

- Full grip protects knuckles
- Sturdy, all steel pointed frame

STHT20807-8 - Mini-Hack utility saw - heavy duty



Features:

- Durable solid aluminum construction
- Ideal for hard-to-reach places
- 10" blades

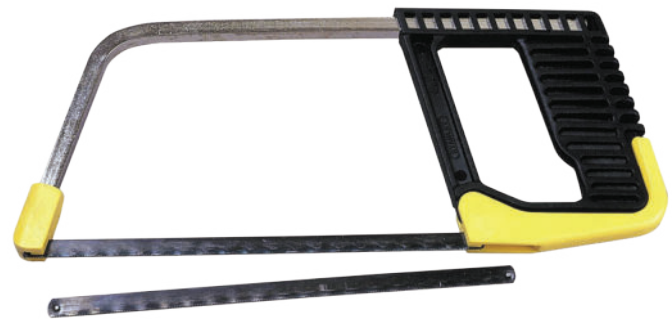
0-20-807 - Mini-Hack utility saw - standard duty



Features:

- Allows the use of truncated sections of blade
- Fine adjustment of the blade length gives greater range of applications
- Ergonomically designed grip with thumb rest for maximum comfort
- Back blade stop for safe handling and use
- 35mm cutting capacity
- Metal mini saw ideal for small areas with limited access

0-15-218 - Junior hacksaw - plastic handle



Features:

- Moulded handle - lightweight and strong
- Lever incorporated in the handle allowing a rapid change in the blade
- Rapid hardened steel blade for improved cutting efficiency
- Quick release hacksaw features a lever moulded into grip handle for easy blade change
- Deep throat for good work capacity
- Square rigid tube mounting for strength

0-20-092 - 3-in-1 Utility saw set



Features:

- Multi-Purpose 3-in-1 Saw Set offers end users the functionality of 3 different blades in one space saving design – universal pull saw blade, metal saw blade and compass saw blade
- The diamond pattern and rubber over-molding on the handle allows end users to use the 3 in 1 Saw with reduced grip slip
- The main blade utilizes a Pull Saw tooth configuration which is less likely to jam or bend while in use
- The turn knob allows the user to conveniently store all three blades, switch blades, and tilt each blade into 6 different positions
- 250mm / 10" aggressive tooth 11 teeth per inch universal wood saw blade cuts on the "pull" stroke – perfect for general woodworking and pruning
- 200mm / 8" compass saw blade 9 teeth per inch for more detailed work
- 150mm / 6" metal hacksaw blade 24 teeth per inch for cutting metal pipes and rods

Saw blade



0-15-842	Saw Blade 300mm 24 Teeth
15-928A	Saw Blade 300mm 18 Teeth

Features:

- Good value for general use
- High carbon steel blades cut mild steel, cast-iron, aluminum, copper
- Points per Inch 19
- Teeth per inch 18
- Blade Length 300mm

3-15-905 - Junior saw blade - 5PC


Features:

- Spare Blade for 0-15-218 and 0-15-405
- 5 blades

Graphite claw hammer



1-51-505	Graphite Claw Hammer - 450g
1-51-507	Graphite Claw Hammer - 540g

Features:

- Comfortable slip resistant grip
- Vibration dampener through the combination of a flexible elastomer coating and a graphite core
- Handle cannot be removed thanks to its exclusive unbreakable head-handle link, flat head and sharp angles
- Full length graphite core shaft for maximum strength and balance
- 5 times fewer vibrations than a wooden handle
- Fully heat treated and rim tempered striking face for strength and safety

Tubular steel handle claw hammer



STHT51081-8	Tubular Steel Handle - 450g
STHT51082-8	Tubular Steel Handle - 570g

Features:

- Flock-filled rubber grip for comfort and durability
- Hardened and tempered tubular steel shaft for strength
- Shaft 15% longer for better balance & control in usage

Ballpein hammer - Hickory wood handle



STHT54189-8	Ball Pein Hammer - Hickory Wood - 383g
STHT54190-8	Ball Pein Hammer - Hickory Wood - 480g
STHT54191-8	Ball Pein Hammer - Hickory Wood - 618g
54-193	Ball Pein Hammer - Hickory Wood - 910g

Features:

- Ball end used for riveting and poll used for normal striking
- Handle 25% longer in 16-32oz sizes for better balance and control
- Meets ANSI standards
- The hammer head is attached with 2 wedges for better durability

Hickory wood handle claw hammer



STHT51271-8	Hickory Wood Handle - 450g
STHT51274-8	Hickory Wood Handle - 570g

Features:

- Forged high-carbon steel head provides durability
- Fully heat-treated and polished bell face
- Light weight wooden handle

Club hammer - Hickory wood handle

57-554

Club Hammer - Hickory Wood Handle -
1000g**Features:**

- Black epoxy head with polished convex faces
- Securely fitted, moisture sealed hickory shaft

Rubber mallet - Hickory wood handle

STHT57528-8

Rubber Mallet - Hickory Wood Handle -
610g**Features:**

- Rubber head helps minimize marring and surface damage
- Tough rubber head molded to a wood handle

Pry bars- Wonder Bar pry bar

55-515:

Wonder bar pry bar

Features:

- Forged, high carbon steel for increased steel and durability
- Contoured bar makes pulling nails, prying and lifting easier
- Polished and beveled cutting edges
- Polished tips and bevelled nail slots – excellent for pulling nails, lifting or prying
- High visibility, powder coated finish
- Heat treated, forged high carbon steel for increased durability



4-84-489 - Maxsteel VDE plier set - 4 PC
Features:

- Interlocking joint assembly for smooth cutting
- Hand ground, induction hardened blade for long life and accuracy
- Heat treated high chrome steel forging for long life and durability
- Bi-material handle with secure grip grooving
- 1000V rated handle
- DIN/ASO/ANSI compliant, EN60900, IEC/CEI900, VDE0693
- Safe live line working to 1,000 V
- Individually tested to 10,000v
- Combination pliers - 165 mm, Half round long nose pliers - 160 mm, Diagonal copper wire cutting pliers - 175 mm & Wire stripper - 170 mm


0-84-002 - VDE combination plier - 200mm

Features:

- Safe live line working to 1,000v
- 1000V rated handle
- Bi-material handle with secure grip grooving
- Heat treated high chrome steel forging for long life and durability
- Hand ground, induction hardened blade for long life and accuracy
- Interlocking joint assembly for smooth cutting
- Individually tested to 10,000v
- Compliant to EN60900, IEC/CEI900, VDE0680

0-84-004 - VDE Diagonal plier - 195mm

Features:

- Safe live line working to 1,000v
- 1000V rated handle
- Bi-material handle with secure grip grooving
- Heat treated high chrome steel forging for long life and durability
- Hand ground, induction hardened blade for long life and accuracy
- Interlocking joint assembly for smooth cutting
- Individually tested to 10,000v
- Compliant to EN60900, IEC/CEI900, VDE0683

0-84-007 - VDE long nose pliers - 210mm

Features:

- Bi-material handle with secure grip grooving
- Hand ground, induction hardened blade for long life and accuracy
- Heat treated high chrome steel forging for long life and durability
- Individually tested to 10,000v
- Interlocking joint assembly for smooth cutting

Long nose pliers



0-84-053	Long Nose - 150mm
0-84-625	Long Nose - 200mm

Features:

- Close fit machined jaws for efficient cutting
- Induction hardened and tempered metal for longer performance
- Bi-material handles for comfort and grip even with oily hands
- Brushed steel finish
- Forged carbon steel jaws and handle for long life

Diagonal cutters



0-84-054	Diagonal Cutters - 150mm
0-84-622	Diagonal Cutters - 200mm

Features:

- Close fit machined jaws for efficient cutting
- Induction hardened and tempered metal for longer performance
- Bi-material handles for comfort and grip even with oily hands
- Brushed steel finish
- Forged carbon steel jaws and handle for long life

Combination plier



0-84-055	Combination Plier - 150mm
0-84-056	Combination Plier - 180mm
0-84-623	Combination Plier - 200mm
84-154	Combination Plier - 228mm

Features:

- Forged carbon steel jaws and handle for long life
- Close fit machined jaws for efficient cutting
- Induction hardened and tempered metal for longer performance
- Bi-material handles for comfort and grip even with oily hands
- Brushed steel finish
- Two-position, adjustable joint pliers used for grasping & turning

Plier set dyna grip bi-material - 3PC

STHT73655-8	Plier Set Dyna Grip Bi-material - 3PC
-------------	---------------------------------------

Features:

- 6" Diagonal Cutting Pliers
- 6" Long Nose Pliers
- 7" Combination Pliers



Basic mini pliers - Needle nose



STHT84096-8	Basic Mini Plier - Needle Nose - 125mm
-------------	--

Features:

- Double dipped handle allows for a comfortable grip
- Drop-forged steel is strong and durable
- Forged carbon steel jaws fully heat treated for optimum performance and durability

Basic mini pliers - Long nose



STHT84119-8	Basic Mini Plier - Long Nose - 100mm
-------------	--------------------------------------

Features:

- Double dipped handle allows for a comfortable grip
- Drop-forged steel is strong and durable
- Forged carbon steel jaws fully heat treated for optimum performance and durability

Basic mini plier - Diagonal cutter



STHT84124-8	Basic Mini Plier Diagonal Cutter - 100mm
-------------	--

Features:

- Double dipped handle allows for a comfortable grip
- Drop-forged steel is strong and durable
- Forged carbon steel jaws fully heat treated for optimum performance and durability
- Meets ANSI specifications

Basic diagonal cutting pliers



STHT84104-8	Basic Diagonal Cutting Plier - 125mm
STHT84105-8	Basic Diagonal Cutting Plier - 150mm
STHT84108-8	Basic Diagonal Cutting Plier - 180mm

Features:

- Double dipped handle allows for a comfortable grip
- Drop-forged steel is strong and durable
- Forged carbon steel jaws fully heat treated for optimum performance and durability
- Meets ANSI specifications

Basic linesman combination pliers



STHT84112-8	Basic Linesman Combination Plier - 180mm
STHT84113-8	Basic Linesman Combination Plier - 200mm

Features:

- Double dipped handle allows for a comfortable grip
- Drop-forged steel is strong and durable
- Forged carbon steel jaws fully heat treated for optimum performance and durability

Basic long nose pliers



STHT84096-8	Basic Long Nose Plier - 125mm
STHT84101-8	Basic Long Nose Plier - 152mm
STHT84102-8	Basic Long Nose Plier - 200mm

Features:

- Double dipped handle allows for a comfortable grip
- Drop-forged steel is strong and durable
- Forged carbon steel jaws fully heat treated for optimum performance and durability

Basic groove joint pliers

0-84-110	Basic Groove Joint Plier - 250mm
84-111	Basic Groove Joint Plier - 300mm

Features:

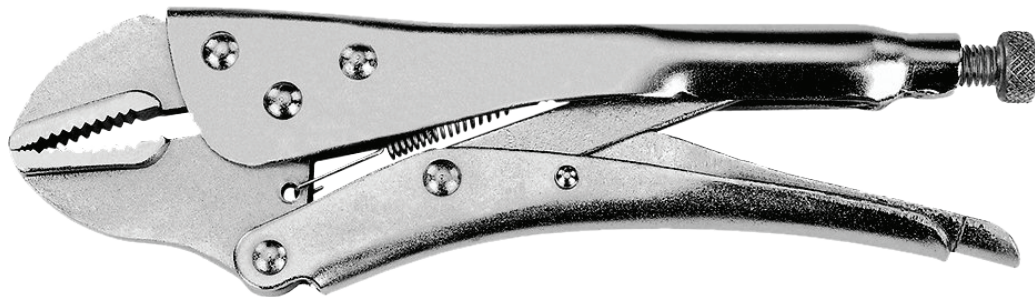
- Heat treated carbon steel forging for long life
- Ground heat treated cutting edges for longer life, durability and accuracy
- Comfort grip handles
- Polished heads
- Multiple jaw positions

Lock jaw pliers - Curved jaw

84-368	Lock Jaw Plier - 178mm Curved Jaw
84-369	Lock Jaw Plier - 254mm Curved Jaw

Features:

- Curved jaws puts tremendous pressure on 4 points at any style or bolt
- Heat-treated adjustable screw
- Ideal for precision work
- Serrated jaws made of chrome molybdenum material

Lock jaw pliers - Straight jaw

84-370	Lock Jaw Plier - 178mm Straight Jaw
84-371	Lock Jaw Plier - 254mm Straight Jaw

Features:

- Heat-treated adjustable screw
- Ideal for precision work
- Serrated jaws made of chrome molybdenum material

0-84-519 - Multitool 12 - in - 1 set**Features:**

- Length when open: 165mm
- Supplied with a STANLEY branded pouch including belt clip
- Easy access to tools
- Ergonomic handle with attractive polished finish
- Stainless steel construction for long life
- Length when bent: 105mm

STHT0-70648 - Multitool - mini set**Features:**

- Hardened and tempered tools for long life
- Modern slick polished look
- Combination pliers - saw - Knife - flathead screwdriver "Phillips" - a flathead screwdriver 3 mm - can opener, file
- An ideal tool for everyday use
- Dimensions folded only 75x32x17mm
- Weight: 78 g
- Saw, Knife, Phillips 1mm & 3mm Slotted Screwdriver, Can Opener, File, Combination Pliers

Maxsteel bench vices

1-83-066	Maxsteel Bench Vice 100mm
1-83-067	Maxsteel Bench Vice 120mm
1-83-068	Maxsteel Bench Vice 150mm

Features:

- Base bolts directly to work bench surface for stability
- Base swivels and locks for versatility
- Chrome-plated to resist corrosion



6-TR250 - Sharpshooter staple / Brad-nail gun



Features:

- Aluminium cast housing for greater durability
- Lock down handle for easier storage
- Pinch point free design for added safety
- Easy push handle – easier to use
- Quick-view window simplifies staple identification
- Accepts heavy duty staples and brads for multiple applications
- Internal wire guide for greater accuracy
- Flush-nose design solves the problem of stapling in tight spots
- Easy access staple & brad insertion for faster loading
- Hi/Lo adjustment to match density of materials

6-TR45 - Staple gun - light duty



Features:

- Lightweight with convenient handle lock for safe storage
- Quick-jam-clear mechanism saves time and hassles
- Chrome-plated steel construction for durability
- Takes light duty staples
- Easy access staple insertion for fast loading
- Lock down handle for easier storage
- Cutcase packaging

Light duty staples

1-TRA206T
Light Duty Staples - 6mm x 1000
1-TRA204T
Light Duty Staples - 8mm x 1000
1-TRA205T
Light Duty Staples - 10mm x 1000

Features:

- Light duty
- 4mm, 6mm, 8mm, 10mm, 12mm, 14mm



Heavy duty staples

1-TRA704T
Heavy Duty Staples - 6mm x 1000
1-TRA705T
Heavy Duty Staples - 8mm x 1000
1-TRA706T
Heavy Duty Staples - 10mm x 1000
1-TRA708T
Heavy Duty Staples - 12mm x 1000
1-TRA709T
Heavy Duty Staples - 14mm x 1000

Features:

- Heavy duty
- 6mm, 8mm, 10mm, 12mm, 14mm



Brad nails

1-SWK-BN050T
Brad Nails - 12mm x 1000
1-SWK-BN625T
Brad Nails - 16mm x 1000

Features:

- Fit most 18 GA Brad Nailers



GR100ZA - Dualmelt pro glue gun kit - 80W**Features:**

- Delivers industrial performance with consumer appeal
- Exclusive auto shutoff light ensures safety, reliability and extended life
- Dual heater provides outstanding glue output
- Temperature switch for both high- and low-temperature glue applications
- On/off light and protected nozzle for added safety
- Cushion grip for comfortable, slip-resistant trigger action
- Interchangeable nozzle capability
- Fold-out stand for safe, handy storage while in use

69-665 - Glue gun - heavy duty - 40W**Features:**

- Delivers industrial performance with consumer appeal
- Exclusive auto shutoff light ensures safety, reliability and extended life
- Dual heater provides outstanding glue output
- Temperature switch for both high- and low-temperature glue applications
- On/off light and protected nozzle for added safety
- Cushion grip for comfortable, slip-resistant trigger action
- Interchangeable nozzle capability
- Fold-out stand for safe, handy storage while in use

69-028 - Mini glue gun - 12W**Features:**

- Trigger feed
- Sleek ergonomic design
- Built-in stand
- Uses mini hot melt or dual temperature glue
- Small, portable size for quick gluing jobs in tight spots
- Trigger-feed mechanism controls glue flow
- Uses standard .28" mini hot melt sticks
- Fold-out stand for handy storage while in use

Glue Sticks

1-GS10DT	Glue Sticks - Mini Dual Temp - 24PC
GS230S	Glue Sticks - All Purpose - 100mm 6PC
GS260	Glue Sticks - Wood working - 100mm 6PC
GS300	Glue Sticks - All Purpose - 11.2 x 300mm 1kg
GS500	Glue Sticks - FOrmula Super Srength - 6 PC



STHT69646-8 - Hand riveters light duty



Features:

- Long handle makes riveter easy to squeeze
- Slim-nose design fits in difficult-to-reach places
- Spring-loaded handle ejects rivet stem automatically

STHT69800-8 - Hand riveters heavy duty



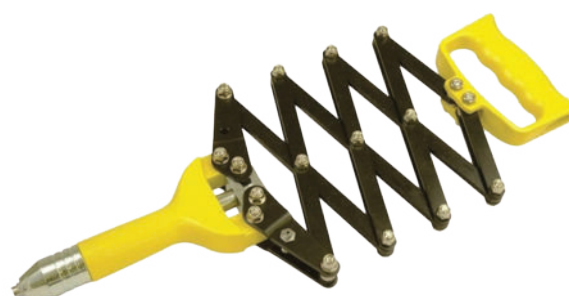
Features:

- 4 nose pieces & wrench store in handle for versatility and convenient storage
- Longer handle for ease of squeeze
- Heavy duty, long lasting
- Accepts aluminium & steel rivets for a wide range of applications

69-800SA - Heavy duty riveters contra-pull

Features:

- Blade storage for convenience
- Instant blade change for speed of use
- Ergonomic, rugged design for heavy duty use



Pipe wrench



87-622	Pipe Wrench - 241mm
87-623	Pipe Wrench - 295mm
87-624	Pipe Wrench - 330mm
87-625	Pipe Wrench - 408mm
87-626	Pipe Wrench - 550mm

Features:

- Cast iron body
- Knurled large carbon steel nut
- Jaw forged in Chrome Molybdenum steel
- Construction in double "T" for greater resistance and durability
- Two way toothing and spring loaded jaw provides positive grip

1-77-174 - Odometer (counter measuring wheel) 5 digit

Features:

- 5 digit counter with manual reset button for superb accuracy
- Die cast Aluminium wheel with wear resistant rubber tread for improved traction & longer life
- Folding Kick stand
- Folding wheel mount
- Gear driven counter with tough plastic housing for long life
- Heavy Duty metal folding handle & rubber hand grip for maximum durability



Soldering iron

69-031B-ZA	Soldering Iron - 30W
69-033B-ZA	Soldering Iron - 40W

Features:

- Shot blasted tips ensure improved torque and corrosion protection
- Smooth domed end for fast spinning action – speed and comfort
- Colour coded ends make it easy to identify the correct screwdriver for each screw type



FATMAX PRO



XTHT0-33671	5m x 32mm
XTHT0-33501	8m x 32mm

Features:

- Bi-material case for comfort
- Hook Storage Securely stores hook when not in use
- 3,3m Blade Standout : Increases reach and efficiency
- Mylar coating : x10 Longer vs standard blade
- BladeArmor® coating : x2 blade life - PATENTED
- New reverse lock mechanism Engage auto-lock for greater control and increased blade life - PATENTED

FMHT43610 - FATMAX extreme aluminium torpedo level**Features:**

- 10 years warranty on the accuracy
- 3 vials (find angles, vertical, horizontal)
- Magnified centre vial for improved all round visibility
- Rounded surface
- V shaped metal groove for use on pipes
- Rare earth magnets which are twice as strong as basic strip magnets
- Die cast aluminium body
- Duplicate angles
- Accuracy ± 0.5 mm/m
- 180 degree rotation vial

0-10-778 - FATMAX Xtream retractable utility knife & 5 blades**Features:**

- Soft touch panels for more comfortable grip
- Blade storage for 5 blades inside handle
- Narrow nose ideal for more accurate cutting applications
- Interlock nose locking system for greater safety during cutting
- Comes supplied with 5 FatMax blades
- Instant change button for fast blade changes
- Cartridge holds up to 5 blades
- Drop testing ensures knife still operates even if dropped
- Ergonomic design ideal for cutting material such as carpet without scrapping knuckles
- Solvent resistance ensures resistance to: Gasoline, Turpentine, Lacquer, Alcohol, Thinners, Mineral Spirits

0-10-780 - FATMAX fixed blade utility knife**Features:**

- Ergonomic design for ease of use
- Soft touch panels/grips allow control, fewer slips
- Blade clamp eliminates blade wobble, gives control
- Pop-up blade dispenser for easy access and fast changeover
- Cartridge holds up to 5 blades
- Supplied with FATMAX® blades
- Dual blade position in nose for versatility

0-10-825 - FATMAX retractable folding knife**Features:**

- Blade storage for convenience
- Instant blade change for speed of use
- Ergonomic, rugged design for heavy duty use
- Retractable blade for safety and convenience
- Folding knife provides safe and convenient pocket storage
- Soft grip handle for comfort

0-65-441 - FATMAX Insulated VDE Flat/Phillips screwdriver set - 6PC

Features:

- Handle moulded direct to bar virtually unbreakable bond.
- Chrome vanadium steel bar allows for high torque and reduces the chance of tip breakage
- Large diameter handle offers great torque needed for driving wood screws
- Colour coded ends make it easy to identify the correct screwdriver for each screw type
- Shot blasted tips ensure improved torque and corrosion protection
- Extremely tough Polyamide blade insulation sleeve makes it resistant to impact at -25 degrees centigrade and ensures increased abrasion resistance and reduced moisture absorption
- Soft grip handle – perfect combination of great grip plus reduces fatigue
- An industrial grade - 1000V a.c. insulation - Tested to EN60900:2004 meaning that this screwdriver is suitable for live working use up to 1000V a.c



0-65-440 - FATMAX Flat/Phillips screwdriver set - 5PC

Features:

- Shot blasted tips ensure improved torque and corrosion protection
- Colour coded ends make it easy to identify the correct screwdriver for each screw type
- Large diameter handle offers great torque needed for driving wood screws
- Chrome vanadium steel bar allows for high torque and reduces the chance of tip breakage
- Handle moulded direct to bar virtually unbreakable bond.
- Soft grip handle – perfect combination of great grip plus reduces fatigue
- Parallel 3.5mm X 75mm, 4mm X 100mm, 5.5mm X 125mm. Philips PH1 X 100mm, PH2 X 125mm



0-20-108 - FATMAX 5-in-1 hacksaw



Features:

- Blade storage inside frame for metal or wood cutting blades
- Blade can be attached to the front of the hacksaw frame for inside cuts
- When working in tight spaces, the front section of the frame can be removed like a jabsaw
- Blade can be quickly positioned to a 45° angle for making flush cuts
- Standard position is a 90 degree hacksaw with large throat depth
- Fully adjustable tension holds blade up to 100kg

0-20-556 - FATMAX plasterboard jab saw



Features:

- Sharpened tip punches through drywall with ease
- Anti-slip ergonomic bi-material handle for optimum user comfort
- Triple bevelled toothing for 50% quicker easier cutting
- Sharp Tooth™ Technology cuts on push and pull strokes and is up to 50% faster than traditional tooth designs
- 7 teeth per inch, ideal for punching through plasterboard
- Excellent for wood, plastic and drywall

FATMAX Extreme antivibe steel claw hammer



FMHT1-51276	FATMAX Extreme antivibe steel claw hammer - 450g
FMHT1-51277	FATMAX Extreme antivibe steel claw hammer - 570g

Features:

- One piece solid forged head for larger sweet spot and better balance
- Patented Torsion Control- Reduces the damaging twisting rotational force felt on arm muscles and tendons by as much as 30% vs. standard one-piece steel hammers
- Patented AntiVibe tuning fork technology reduces arm damaging vibrations
- New 75% Larger striking face for a bigger sweet spot

FATMAX Combination pliers



0-89-879	FATMAX Combination plier - 180mm
0-89-868	FATMAX Combination plier - 200mm

Features:

- Heat treated forged chrome steel alloy for long life and durability
- Easy adjustment of grips while in use
- Ergonomic guards for efficient pulling and pushing actions
- Complies with all DIN, ISO and ANSI standards
- FatMax grips resistant to most common chemicals
- Polished head
- Comfortable and increased control thanks to FatMax soft bimaterial handles

FATMAX Diagonal cutting pliers

0-89-858	FATMAX Diagonal cutting plier - 150mm
0-89-850	FATMAX Diagonal cutting plier - 190mm
0-89-850	FATMAX Diagonal cutting plier - 200mm

Features:

- Easy adjustment of grips while in use
- Comfortable and increased control thanks to NEW FatMax soft bimaterial handles
- Ergonomic guards for efficient pulling and pushing actions
- Complies with all DIN, ISO and ANSI standards
- FatMax grips resistant to most common chemicals
- Heat treated forged chrome steel alloy for long life and durability

FATMAX Long nose pliers

0-89-869	FATMAX Long nose plier - 150mm
0-89-870	FATMAX Long nose plier - 200mm

Features:

- Easy adjustment of grips while in use
- Comfortable and increased control thanks to NEW FatMax soft bimaterial handles
- Ergonomic guards for efficient pulling and pushing actions
- Complies with all DIN, ISO and ANSI standards
- FatMax grips resistant to most common chemicals
- Polished head
- Heat treated forged chrome steel alloy for long life and durability

FATMAX Multigrip groove joint plier

0-84-858	FATMAX Multigrip groove joint plier - 150mm
0-84-647	FATMAX Multigrip groove joint plier - 200mm
0-84-648	FATMAX Multigrip groove joint plier - 250mm
0-84-649	FATMAX Multigrip groove joint plier - 300mm

Features:

- PushLock™ adjustment button - patented mechanism
- Optimised jaw geometry for multiple gripping applications - performance and accessibility
- Ergonomic bi-material handle for comfortable grip and increased control
- 17 adjustable locking positions for versatility
- Induction hardened jaws for increased durability
- Drop forged construction for added strength

0-89-874 - FATMAX Cable Cutter - 220mm**Features:**

- Easy adjustment of grips while in use
- Comfortable and increased control thanks to NEW FatMax soft bimaterial handles
- Ergonomic guards for efficient pulling and pushing actions
- Complies with all DIN, ISO and ANSI standards
- FatMax grips resistant to most common chemicals
- Polished head
- Heat treated forged chrome steel alloy for long life and durability

2-14-563 - FATMAX Straight aviation snips - long cut - 250mm**Features:**

- Suitable for cutting aluminium, sheet UPVC, wire mesh, leather, copper and plastic
- Serated cutting edges prevent slippage when cutting
- Made from forged alloy steel for strength and durability
- Twin spiral spring for increased longevity
- Automatic unblocking of the lock/seal by simple pressure
- Permanent identification plate for the direction of cutting
- Chrome plated nuts and bolts
- Toothed blades favouring the holding of the sheet metal during cutting
- Exceeds ANSI standards for cutting performance and durability
- Cuts up to 18 gauge mild steel 0.7 to 1.2mm

2-14-562 - FATMAX Offset aviation snips - left cut - 250mm**Features:**

- Double pivot action for high cutting power
- One handed automatic latch release
- Bi-material easy grip handles
- Cuts up to 18 gauge mild steel 0.7 to 1.2mm
- Made from forged alloy steel for strength and durability
- Serated cutting edges prevent slippage when cutting
- Suitable for cutting aluminium, sheet UPVC, wire mesh, leather, copper and plastic
- Same characteristics as the aviation snips straight

2-14-564 - FATMAX offset aviation snips - right cut - 250mm



Features:

- Double pivot action for high cutting power
- One handed automatic latch release
- Bi-material easy grip handles
- Cuts up to 18 gauge mild steel 0.7 to 1.2mm
- Made from forged alloy steel for strength and durability
- Serated cutting edges prevent slippage when cutting
- Suitable for cutting aluminium, sheet UPVC, wire mesh, leather, copper and plastic
- Same characteristics as the aviation snips straight

1-93-935 - FATMAX Waterproof toolbox - 71cm



Features:

- Tough Ergonomic soft grip handle allows heavy loads to be carried with ease
- Integrated V-Groove on top lid for sawing work needed, suitable for working with pipes and lumber
- Large metal rust proof latches with padlock for locking possibilities
- Portable Tote tray designed to carry tools and small parts, yet enables large tool storage inside the tool box as it is 3/4 length
- Dimensions : 71.4x25.4x30.9cm - 28"

1-93-293 - FATMAX Professional organiser extra large - 49cm x 43cm



Features:

- Comfortable heavy duty shoulder strap & 14 removable storage cups
- Durable rust proof latches and back hinges
- Aluminium tubular handle for stable portability and convenient carrying of extra heavy loads, suitable for use with gloved hands
- Rust proof metal back hinges and aluminium latches
- Extra large storage capacity for small parts and accessories
- See through polycarbonate lid locks components in position for easy access

1-95-611 - FATMAX Backpack toolbag - 37cm x 27cm x 46cm



Features:

- 50 Pockets / tool holders for a wide variety of tools, including longer tools on the side such as a level
- Waterproof plastic bottom protects against moisture and dirt
- Removable dividers system with tool holders is easily detachable, with handle for easy carriage. Spreads to form a work surface
- Rigid form can stand in open position enabling access to all tools
- Back support system and air mesh shoulder straps for ergonomic, convenient carriage. Spreads weight of tools instead of lifting in one hand
- Separate, strong compartment for power tool or laptop
- Dual zipper closure enables opening from every end
- Weight when empty 2,21kg / 28l

ARTISAN BOX LEVELS



F7700LLB	Artisan Box Level - 300mm
F7701LLB	Artisan Box Level - 450mm
F7702LLB	Artisan Box Level - 600mm
F7703LLB	Artisan Box Level - 800mm
F7704LLB	Artisan Box Level - 900mm
F7705LLB	Artisan Box Level - 1000mm
F7706LLB	Artisan Box Level - 1200mm

Features:

- Light duty aluminium box section with single plumb and horizontal vials.
- Graduated in mm's on bottom edge. Machined base. 1mm / m accuracy

F7744LL5 - Magnetic Spirit level - 600mm



Features:

- BUILDERS MAGNETIC LEVEL heavy duty box section with hand holes and plumb, horizontal and angle vial. Magnetic base for use on steel structures.

FF77-9LS4 - Boat level



Features:

- BOAT LEVEL aluminium and plastic body with magnetic base. Fitted with horizontal vertical and 45 degree vials.

Light duty tape measures



F7710PR5	Light duty tape measure - 3m x 16mm
F7711PR5	Light duty tape measure - 5m x 16mm
F7720PR5	Light duty tape measure - 8m x 16mm

Features:

- Power return steel tape in plastic / rubber moulded case with tape stopper.
- Graduated mm both edges

Heavy duty tape measures



F7196PR11	Heavy duty tape measure - 3m x 16mm
F7197PR11	Heavy duty tape measure - 3m x 16mm
F7199PR11	Heavy duty tape measure - 3m x 16mm

Features:

- Power return, nylon coated steel tape, shockproof Co-Moulded rubber / plastic case for comfortable grip.

Long tape - Fibre glass



F7713TM8	Long tape - Fibreglass - 10m x 12mm
F7714TM8	Long tape - Fibreglass - 20m x 12mm
F7715TM8	Long tape - Fibreglass - 30m x 12mm
F7716TM8F	Long tape - Fibreglass - 50m x 12mm
F7717TM8F	Long tape - Fibreglass - 100m x 12mm

Features:

- Medium duty fibreglass strands coated with PVC, wound into plastic case, graduated both sides and fitted with end ring.
- 1/16, 5/64, 3/32, 7/64, 3/8, 9/64, 5/32, 3/16, 7/32, 1/4, 5/16"
- On plastic, open frame winder – graduated metric both sides and fitted with end ring.

Long tape - Steel



F7230TM12	Long tape - Steel - 10m x 10mm
F7232TM12	Long tape - Steel - 20m x 10mm
F7233TM12	Long tape - Steel - 30m x 10mm
F7234ATM12F	Long tape - Steel - 50m x 12mm
F7240TM12F	Long tape - Steel - 100m x 12mm

Features:

- Lacquer coated steel tape in ABS plastic case with belt clip.
- Graduated mm's and metres – fitted with end ring and hook.
- Lacquer coated steel tape in ABS plastic frame winder.
- Graduated mm's and metres – fitted with end ring and hook.

Mining Tape



F6082MT15	Mining Tape - 15m
F6083MT30	Mining Tape - 30m
F6084MT60	Mining Tape - 60m

Features:

- MINING TAPE complete with ABS plastic case and plated steel handle.

PRO CHROME TAPES



F7230TM12	Long tape - Steel - 10m x 10mm
F7232TM12	Long tape - Steel - 20m x 10mm
F7233TM12	Long tape - Steel - 30m x 10mm
F7234ATM12F	Long tape - Steel - 50m x 12mm
F7240TM12F	Long tape - Steel - 100m x 12mm

Features:

- Lacquer coated steel tape in ABS plastic case with belt clip.
- Graduated mm's and metres – fitted with end ring and hook.
- Lacquer coated steel tape in ABS plastic frame winder.
- Graduated mm's and metres – fitted with end ring and hook.

F7708LS8 - F120 x 75mm Post level



Features:

- POST LEVEL plastic body with magnetic strips. Fitted with vials in all 3 planes & hooks for bricklayers string.

Chalk Line



F7760CHL1	Chalk Line - 30m
F7768CHB200	Chalk Blue - 10PK
F7769CHR200	Chalk Red - 10PK

Features:

- CHALK LINE in plastic case. Individually display packed.

Measuring wheel



F7637MW7	ROSS - Circumference 1m
F7630MW3A	Roto-Sure - Circumference 500mm
F7624MW4A	Roto-Sure - Circumference 1m

Features:

- ROSS MEASURING WHEEL light duty frame with 1m circumference wheel, illuminated counter and carry bag.
- R/SURE-MEASURING WHEEL standard light duty frame with 500mm circumference wheel and trigger brake.
- R/SURE-ECONO MEASURING WHEEL standard light duty frame with 1m circumference wheel and trigger brake.

F7749TK1 - Trimming knife - Fixed blade**Features:**

- Fixed blade

F7270 TK2 - Trimming knife - Retractable blade**Features:**

- Retractable blade

F4006 TK9 - Heavy Duty Knife**Features:**

- Retractable blade
- Heavy duty

F4001 TK5 - Knife - Snap-off aluminium body- 18mm**Features:**

- 18mm Snap off blade
- Aluminium alloy body

Knife - Snap-off plastic body

F4005TK8	Snap-off plastic body - 9mm
F4002TK6	Snap-off plastic body - 18mm

Features:

- Retractable blade for safety and convenience
- Light plastic housing
- Snap off blade

F4000 TK4 - Folding utility knife and pouch**Features:**

- Folding knife with belt clip
- Pouch included

FMTK7 - Folding skeleton knife



Features:

- Folding knife with belt clip

Snap-off blades



F7745TK8B	Snap-off blades - 9mm 10PK
F7748TK6B	Snap-off blades - 18mm 10PK

Features:

- Snap off blades

F4041TKB10 - Standard duty blades - 10PK



Features:

- Standard replacement blades

Heavy duty blades



F4030TK1B/H5	Heavy duty blades - 5PK
F4036TK1B/H20	Heavy duty blades - 20PK
F4031TK1B/H100	Heavy duty blades - 100PK
F4035TK1B/H350	Heavy duty blades - 350PK

Features:

- Sheffield steel blades.

MFP - 1-in-1 Multi tool



FMHS2 - 300mm Professional hacksaw frame



FMHS1 - 300mm Trubor hacksaw**FMHS3** - Junior Hacksaw**3380002K** - 300mm Mini Hacksaw**4600001** - 4 Nozzle Hand Rivet Gun**MM001** - 72PC Mini markers**Features:**

- One hand use
- Nozzles: 2.4, 3.2, 4.0, 4.8

F7514 53R - Engineers folding steel rule



Features:

- Two fold, rustless steel
- Graduated mm on one edge on both sides

F5422 60R - Engineers line of chords rule



Features:

- Two fold, rustless steel rule
- Graduated mm and line of chords on one side and mm and circumference scale on the other.

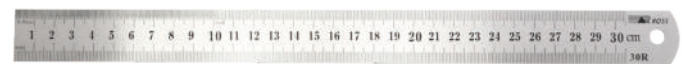
F4503 FR3 - Clinometer Rule



Features:

- 4 fold polycarbonate plastic rule
- Fitted with spirit level and centre protractor
- Graduated in 5mm divisions

General purpose steel rules



F7730 30R	General purpose steel rules - 150mm
F7731 30R	General purpose steel rules - 300mm
F7732 30R	General purpose steel rules - 600mm
F7733 30R	General purpose steel rules - 1000mm
F7735 30R	General purpose steel rules - 2000mm

Features:

- Rustless steel
- Graduated mm both sides on both edges

Dumpy level and accessories



F7640 AL32CC	Dumpy level 32 x magnification
F7644 T1	Aluminium tripod
F7646SS2	Aluminium leveling staff

Features:

- Auto-level laser level
- 32 x magnification
- With carry case



Parallel shank jobber drill bits

1000100C2	1.0mm (2/Card)
1000150C2	1.5mm (2/Card)
1000200C2	2.0mm (2/Card)
1000250C2	2.5mm (2/Card)
1000300C2	3.0mm (2/Card)
1000350C	3.5mm
1000400C	4.0mm
1000450C	4.5mm
1000480C	4.8mm
1000500C	5.0mm
1000550C	5.5mm
1000600C	6.0mm
1000650C	6.5mm
1000700C	7.0mm
1000750C	7.5mm
1000800C	8.0mm
1000850C	8.5mm
1000900C	9.0mm
1000950C	9.5mm
1001000C	10.0mm
1001050C	10.5mm
1001100C	11.0mm
1001150C	11.5mm
1001200C	12.0mm
1001250C	12.5mm
1001300C	13.0mm



Features:

- 118 degrees point angle fully ground drill made of 9341 material to DIN 338 specifications for drilling into all steel.

Steel industrial cobalt drill bits

1030150C2	1.5mm (2/Card)
1030200C2	2.0mm (2/Card)
1030250C2	2.5mm (2/Card)
1030300C2	3.0mm (2/Card)
1030320C	3.20mm
1030400C	4.00mm
1030420C	4.20mm
1030450C	4.50mm
1030480C	4.80mm
1030500C	5.00mm
1030550C	5.50mm
1030600C	6.00mm
1030700C	7.00mm
1030800C	8.00mm
1030900C	9.00mm
1031000C	10.0mm
1031050C	10.5mm
1031100C	11.0mm
1031200C	12.0mm
1031300C	13.0mm



Features:

- 135 degrees split point angle a fully round drill made with M2 and cobalt material in DIN 338 specification for high quality life time.

Masonry SDS + Drill

2220501C	5.0 x 110
2220502C	6.0 x 160
2220604C	6.0 x 260
2220802C	8.0 x 160
2220804C	8.0 x 260
2221002C	10 x 160
2221202C	12 x 160
2221405C	13 x 310
2221605C	16 x 300



Features:

- Made from carbon steel nickel plated with carbide tip for drilling into brick and concrete.

1180190 - Drill steel set



Features:

- Mitco Drill set - 1.0mm - 13.0mm by 0.5mm

DIY Masonry drill bits - Standard lenght

2240321C	3.0 x 75
2240351C	3.5 x 75
2240401C	4.0 x 75
2240452C	4.5 x 85
2240502C	5.0 x 85
2240552C	5.5 x 85
2240603C	6.0 x 100
2240653C	6.5 x 100
2240703C	7.0 x 100
2240804C	8.0 x 120
2240854C	8.5 x 120
2240904C	9.0 x 120
2240954C	9.5 x 120
2241004C	10.0 x 150
2241105C	11.0 x 150
2241205C	12.0 x 150
2241305C	13.0 x 150
2241405C	14.0 x 150
2241505C	15.0 x 150
2241605C	16.0 x 150
2241806C	18.0 x 160
2242006C	20.00 x 160



Features:

- Made from carbon steel nickel plated with carbide tip for drilling into brick and concrete.

DIY Masonry drill bits - Long lenght

2240647C	6.0 X 330
2240807C	8.0 X 330
2240957C	9.5 X 330
2241257C	13.0 X 330
2241607C	16.0 X 330
2242006C	20.00 x 160



Features:

- Made from carbon steel nickel plated with carbide tip for drilling into brick and concrete.

2280040B - Drill set - Masonry



Features:

- Size: 4mm, 6mm, 8mm, 10mm

1030020B - Drill set - steel industrial colbalt

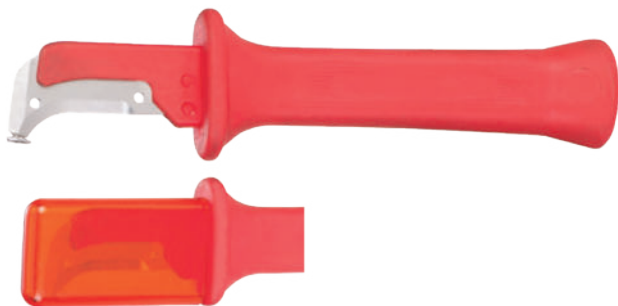


Features:

- Sizes: 3mm, 4mm, 5mm, 5.5mm, 6mm, 6.5mm, 7mm, 8mm, 10mm

CABLE KNIVES

CKHB - Cable stripping knife with fixed hook blade



Total length:	155mm
Blade length:	38mm
Weight:	0.90kg

Features:

- No damage of the conductor cores
- Blade made of stainless steel
- Ergonomically designed safety handle, with transparent protective cap

CKSB - Cable stripping knife with straight blade



Total length:	180mm
Blade length:	50mm
Weight:	0.75kg

Features:

- No damage of the conductor cores
- Blade made of stainless steel
- Ergonomically designed safety handle, with transparent protective cap

CKCB - Cable stripping knife with curved blade



Total length:	180mm
Blade length:	40mm
Weight:	0.75kg

Features:

- No damage of the conductor cores
- Blade made of stainless steel
- Ergonomically designed safety handle, with transparent protective cap

CKSBE - Cable stripping knife with straight blade



Total length:	180mm
Blade length:	50mm
Weight:	0.65kg

Features:

- No damage of the conductor cores
- Blade made of stainless steel
- Ergonomically designed safety handle, with transparent protective cap

CKTW - Cable stripping knife for terminal wire



Total length:	150mm
Blade length:	28mm
Weight:	0.70kg

Features:

- No damage of the conductor cores
- Blade made of stainless steel
- Ergonomically designed safety handle, with transparent protective cap



SDE1 - 7 Piece insulated screwdriver set



Slotted:	3.0 x 100mm; 5.0 x 125mm; 6.5 x 150mm
Phillips:	PH0 x 75mm; PH1 x 100mm; PH2 x 100mm
Voltage Tester:	Multifunction

Features:

- Blade material Cr-V
- Magnetic tips.

SDE3 - 3 Piece insulated screwdriver set



Mains tester:	120-250V
Phillips:	PH1 x 100mm
Slotted:	5.5 x 100mm

Features:

- Blade material Cr-V
- Magnetic tips.

SDP2 - 9 Piece deluxe precision screwdriver set



Slotted:	1.5 x 50mm; 2.0 x 50mm
Phillips:	PH00 x 50mm; PH0 x 50mm
Torx:	T10 x 50mm; T9 x 50mm; T8 x 50mm; T6 x 50mm; T5 x 50mm

SDM1 - 7 Piece engineering screwdriver set



Phillips:	PH1; PH2
Slotted:	3.0 x 150mm; 5.0 x 100mm; 6.5 x 100mm; 8.0 x 150mm

Features:

- Slip resistant "Tyre-Grip" handle
- Premium quality SVCM blade 58-61 HRC
- 23% Strength saving

SDE6 - 6 Piece "Tyre-Grip" handle 1000V screwdriver set

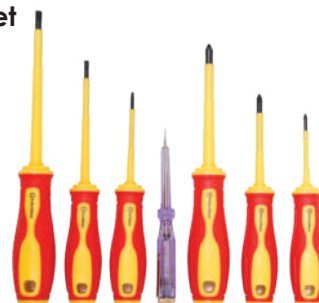


Slotted:	3.0mm x 75mm
Phillips:	PH2 x 100mm

Features:

- Superior slip resistant "Tyre-Grip" handle
- Premium Quality Cr-V Blade
- 54~58 HRC
- Black magnetic tip
- 23% strength saving

SDE7 - 7 Piece "Tyre-Grip" handle 1000V screwdriver set



Slotted:	3.0 x 75mm; 4.0 x 100mm; 5.5 x 125mm
Phillips:	PH0 x 60mm; PH1 x 5mm; PH2 x 100mm
Neon Tester	

Features:

- 1000V certification
- Superior slip resistant "Tyre-Grip" handle
- Cr-V material 54 ~ 58HRC
- Black magnetic tip
- 23% Strength saving

SDM8 - 8 Piece "Tyre-Grip" engineering screwdriver set



Slotted:	3.0 x 150mm; 5.0 x 100mm; 6.5 x 100mm
Phillips:	PH1; PH2
POZI:	PZ1; PZ2

Features:

- Slip resistant "Tyre-Grip" handle
- Premium Quality SVCM blade 58~61 HRC
- Strong magnetic black tip
- 23% Strength saving

SDMPH2300 - "Tyre-Grip" engineering screwdriver



Phillips:	PH2 x 300mm Long
-----------	------------------

Features:

- Long blade length ideal for reaching deeply inset screw
- Cr-V material 54~58 HRC

SDD2 - 2 Piece demolition screwdriver set



Slotted:	8 x 200mm
Phillips:	PH2 x 200mm

Features:

- Steel core transfers strike force from strike cap to tip
- Slip resistant design handle
- 100% oil resistant

SDP6 - 6 Piece precision screwdriver set



Slotted:	14mm; 2.0mm; 2.4mm; 3.0mm
Phillips:	PH0; PH1

Features:

- Comfortable grip with rotary basecap
- Cr-V material 50~55 HRC black tip
- Handle ABS & TPE, ABS Case
- Ideal for use with glasses, cameras, watches, electronics, computers and small appliances

SDP10 - 10 Piece professional precision screwdriver



Slotted:	1.4mm; 2.0mm; 3.0mm
Phillips:	PH0; PH00; PH000
Torx:	T4; T5; T6; T8

Features:

- Comfortable handle with rotary base
- Convenient storage case with rotatable hanger
- Premium quality Cr-V material 54 ~ 58 HRC and rotary cap

SDAVT - DC automotive voltage tester with clip



* ATTENTION: Product with sharp point, please be careful. Keep out of reach of children

Features:

- Neon Indicator testing > 30 000 times
- 6 - 24 V DC
- Anti rust tip
- One piece molded insulated blade sheath and transparent plastic handle for maximum safety
- Good quality mini-clip
- Quality insulation AS body
- Length: 145mm
- 50~58 HRC

SDVT1 - Neon voltage tester



Features:

- CE Approved
- 100-500 V AC
- Neon lamp 30 000 Times
- 3.0 x 145mm Long
- Quality insulation AS body
- AS/Cr-V blade 50~55 HRC

SDSB35 - 35 Piece stubby "Tyre-Grip" screwdriver bit



Torx:	T4; T5; T6; T7; T8; T9; T10; T15; T20; T25; T30
Phillips:	PH0; PH1; PH2; PH3
Slotted:	3.0; 4.0; 5.0; 6.0
Y:	1; 2; 3
	S1; S2
U:	2; 4; 6
Hex:	H2;; H2.5; H3.0; H4.0; H5.0; H6.0

Features:

- Includes Stubby handle, 33 bit set and a Magnetic extension bit holder

SDVT2 - Neon voltage tester



Features:

- CE Approved
- 100-500 V AC
- Cr-V material 54~58 HRC
- Quality insulation AS body
- Neon lamp testing more than 30 000 times
- Length: 4mm x 190mm

TORCD1 - 12LM - 12 Lumens Mini keychain torch (1 x AAA battery included)

Features:

- Aircraft aluminium body, drop resistant with type II anodizing finish to protect surface
- 5mm LED, up to 100000 hours life time
- Head rotation switch
- IPX4 water resistant
- Size: 70mm x 13mm 15mm
- Weight: 19.2g (excl Battery)
- Mode: ON/OFF
- Output: 12LM
- Run Time: 10H



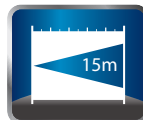
High Mode



Water Resistant



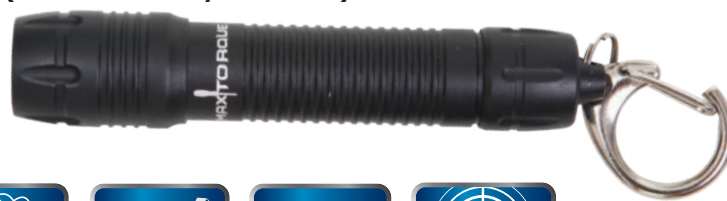
Drop Resistant



Beam Distance



Intensity



TOR301 - 240LM - 240 Lumen magnetic LED tent lamp and flashlight (3 x AAA Batteries included)

Features:

- USA 3W CREE LED, up to 50000 hours lifetime
- Tail on/off switch with 10000 cycle lifetime
- IPX4 water resistant and impact resistant lens
- Aircraft aluminium body, drop resistant with type II anodizing finish to protect surface
- Size: 115mm x 26mm x 28mm
- Weight: 83g (excl batteries)
- Mode: HIGH / LOW / STROBE
- Output: 240 / 50 / 240 LM
- Run Time: 2H / 12H



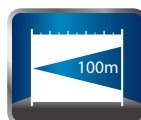
High Mode



Water Resistant



Drop Resistant



Beam Distance



Intensity



TOR101 - 380LM - 380 Lumen high brightness LED torch (3 x AAA Batteries included)

Features:

- CREE XP - G2 S2 LD up to 50000 hours lifetime
- Tail on/off switch with 10000 cycle lifetime
- IPX4 water resistant and impact resistant lens
- Aircraft aluminium body, drop resistant with type II anodizing finish to protect surface
- Size: 138mm x 36mm x 45mm
- Weight: 210g (excl batteries)
- Mode: LOW / MIDDLE / HIGH / MAX / STROBE / SOS
- Output: 35 / 75 / 170 / 380 / 380 / 380 LM
- Run Time: 60H / 30H / 10H / 9.5h



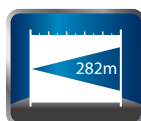
High Mode



Water Resistant



Drop Resistant



Beam Distance



Intensity



TOR304 - 200LM - 200 Lumen super bright torch (3 x AAA batteries included)

Features:

- Up to 50000 hours lifetime
- Tail on/off switch with 10000 cycle lifetime
- IPX4 water resistant and impact resistant lens
- Aircraft aluminium body, drop resistant with type II anodizing finish to protect surface
- Size: 126.5mm x 20mm x 32mm
- Weight: 124.5g (excl batteries)
- Mode: ON/OFF
- Output: 200LM
- Run Time: 3H



High Mode



Water Resistant



Drop Resistant



Beam Distance



Intensity

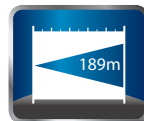


TORB01 - 270LM - 270 Lumen rechargeable torch (Li-Ion battery included)



High Mode

Water Resistant



Drop Resistant

Beam Distance

Intensity



Includes 18650 Li-Ion Battery 2500Ah

Features:

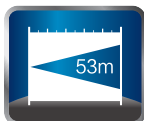
- CREE XP - G2 S2 up to 50000 hours lifetime
- Tail on/off switch with 10000 cycle lifetime
- IPX4 water resistant and impact resistant lens
- Aircraft aluminium body, drop resistant with type II anodizing finish to protect surface
- Size: 165mm x 23mm x 35mm
- Weight: 155g (excl batteries)
- Mode: HIGH / LOW / SOS
- Output: 35 / 75 / 170 / 380 LM
- Run Time: 2.5H / 5h

TORHEAD - 60LM - 60 Lumens 2-in-1 headlamp and torch (batteries not included)



High Mode

Water Resistant



Drop Resistant

Beam Distance

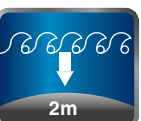
Intensity



Features:

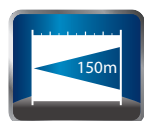
- 1 x AA Battery, multi lighting modes
- Mini size, very light weight and easy to carry
- Head switch
- IPX4 water resistant and impact resistant lens
- Aircraft aluminium body, drop resistant with type II anodizing finish to protect surface
- Length: 89mm
- Weight: 30g (excl Battery)
- Mode: ON/OFF
- Output: 60LM
- Run Time: 6H

TORHEAD3 - 350LM - 350 Lumen super brightness LED headtorch (3 x AAA Batteries included)



High Mode

Water Proof



Drop Resistant

Beam Distance

Intensity



Features:

- CREE XP - G2 S2 up to 50000 hours lifetime
- Tail on/off switch with 10000 cycle lifetime
- IPX4 water resistant and impact resistant lens
- Aircraft aluminium body, drop resistant with type II anodizing finish to protect surface
- Size: 126.5mm x 64mm x 45mm
- Weight: 88g (excl batteries)
- Mode: LOW / MIDDLE / HIGH / HIDDEN MAX / STROBE / SOS
- Output: 30 / 60 / 160 / 350 / 350 / 350 LM
- Run Time: 40H / 15H / 4.5H / 4H

MISCELLANEOUS

RG1000 - Stainless steel strapping tool with built-in cutter



Strapping size:	9mm - 19mm
Thickness:	0.90 maximum
Length:	250mm
Weight:	1.82kg

Features:

- Superior slip resistant "Tyre-Grip" handle
- Premium Quality Cr-V Blade

LY205 - Strain relief bushing, insertion and extraction pliers



Length:	180mm
Weight:	0.14kg

Features:

- 1000V certification
- Superior slip resistant "Tyre-Grip" handle
- Cr-V material 54 ~ 58HRC
- Black magnetic tip
- 23% Strength saving

KPS1631PPE - PPE Tools Rucksack



Features:

- Durable Tool Rucksack
- PPE material
- Tools not included
- Ideal for mining environment
- High visibility straps

KPS1631 - Tools Rucksack



Features:

- Durable Tool Rucksack
- PVC material
- Tools not included