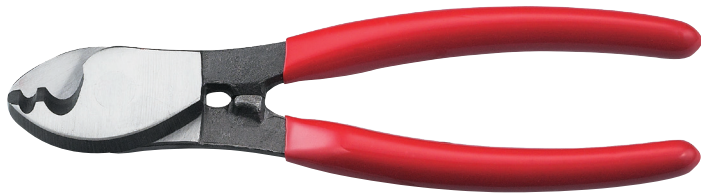


## LK-22A - Cable and wire cutter for CU/AL

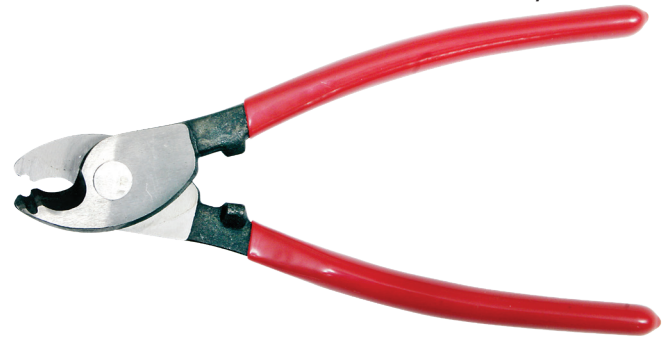


Cutting Range:	Up to 25mm <sup>2</sup>
Length:	160mm
Max Diameter:	15mm
Weight:	0.19kg

**Notes:**

- Not Suitable for cutting steel wire, armoured cable and steel rope

## LK-38A - Cable and wire cutter for CU/AL

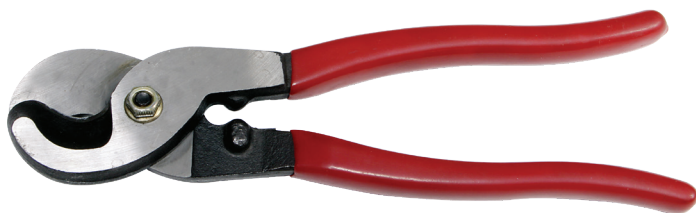


Cutting Range:	Up to 35mm <sup>2</sup>
Length:	190mm
Max Diameter:	7mm
Weight:	0.3kg

**Notes:**

- Not Suitable for cutting steel wire, armoured cable and steel rope

## LK-60A - Cable and wire cutter for CU/AL

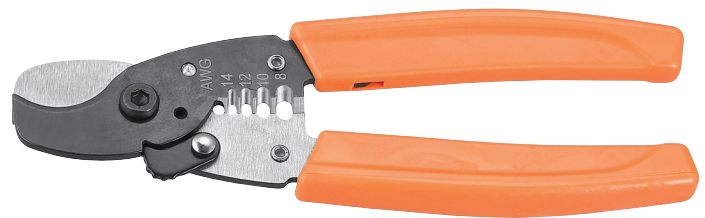


Cutting Range:	Up to 60mm <sup>2</sup>
Length:	210mm
Max Diameter:	20mm
Weight:	0.4kg

**Notes:**

- Not Suitable for cutting steel wire, armoured cable and steel rope

## HS-50A - Cable and wire cutter for CU/AL



Cutting Range:	Up to 35mm <sup>2</sup>
Length:	200mm
Max Diameter:	11mm
Weight:	0.1kg

**Notes:**

- Not Suitable for cutting steel wire, armoured cable and steel rope

## VK-60 - Cable and wire cutter for CU/AL



Cutting Range:	Up to 60mm <sup>2</sup>
Length:	200mm
Max Diameter:	20mm
Weight:	0.3kg

**Notes:**

- Not Suitable for cutting steel wire, armoured cable and steel rope

## HS-95A - Cable and wire cutter for CU/AL



Cutting Range:	Up to 70mm <sup>2</sup>
Length:	220mm
Max Diameter:	15mm
Weight:	0.29kg

**Notes:**

- Not Suitable for cutting steel wire, armoured cable and steel rope

**HS-325A - Ratchet cable core cutter for CU/AL**



Cutting Range:	Up to 240mm <sup>2</sup>
Length:	260mm
Max Diameter:	32mm
Weight:	0.7kg

**Notes:**

- Not Suitable for cutting steel wire, armoured cable and steel rope

**LK-450A - Ratchet cable core cutter for CU/AL**

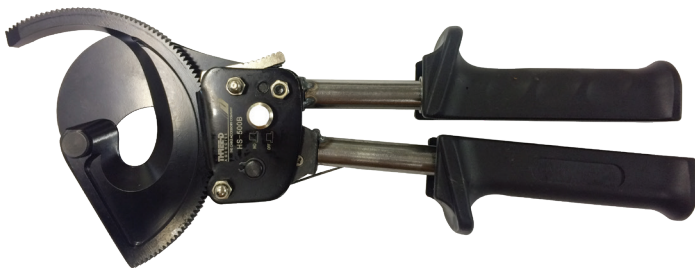


Cutting Range:	Up to 400mm <sup>2</sup>
Length:	240mm
Max Diameter:	45mm
Weight:	1.06kg

**Features:**

- Not Suitable for cutting steel wire, armoured cable and steel rope

**VC-500B - Heavy duty ratchet cable core cutter for CU/AL**

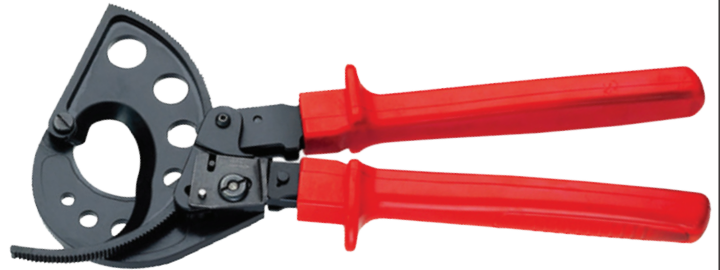


Cutting Range:	Up to 500mm <sup>2</sup>
Length:	235mm
Max Diameter:	50mm
Weight:	1.02kg

**Notes:**

- Extendable handles
- Not Suitable for cutting steel wire, armoured cable and steel rope

**HS-765 - Ratchet cable core cutter for CU/AL**



Cutting Range:	Up to 400mm <sup>2</sup>
Length:	310mm
Max Diameter:	40mm
Weight:	1.02kg

**Notes:**

- Not Suitable for cutting steel wire, armoured cable and steel rope

**HST75 - Ratchet cable core cutter for CU/AL**

Cu/Al Cable	Armoured Cable	Marine Cable
Wire Rope	Rebar/Chain	Steel Strand
ACSR Cable		



Cutting Range:	Armoured CU Up to 120mm <sup>2</sup> Armoured AL up to 75mm <sup>2</sup>
Length:	420mm
Max Diameter:	75mm
Weight:	3.6kg

**Notes:**

- Suitable for cutting steel wire, armoured cable and steel rope
- Extendable hand grips

**HST100 - Ratchet cable core cutter for CU/AL**

Cu/Al Cable	Armoured Cable	Marine Cable
Wire Rope	Rebar/Chain	Steel Strand
ACSR Cable		



Cutting Range:	Armoured CU Up to 300mm <sup>2</sup> Armoured AL up to 100mm <sup>2</sup>
Length:	490mm
Max Diameter:	100mm
Weight:	6.4kg

**Notes:**

- Suitable for cutting steel wire, armoured cable and steel rope
- Extendable hand grips

## LK-250 - Heavy duty cable cutter with long handles

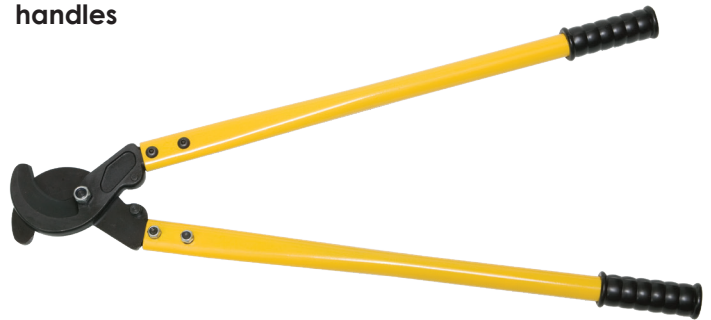


Cutting Range:	Up to 250mm <sup>2</sup>
Length:	600mm
Weight:	1.2kg

### Notes:

- Not Suitable for cutting steel wire, armoured cable and steel rope

## LK-500 - Heavy duty cable cutter with long handles

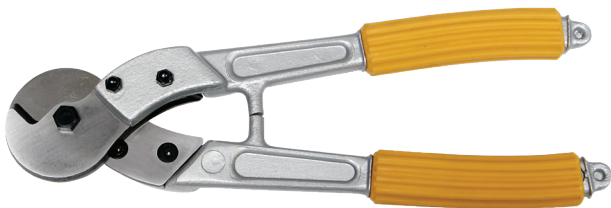


Cutting Range:	Up to 500mm <sup>2</sup>
Length:	800mm
Weight:	2.8kg

### Notes:

- Not Suitable for cutting steel wire, armoured cable and steel rope

## L71060SC - Heavy duty wire rope cutters with long handles



Cutting Range:	7mm Ø steel rope or 5mm steel rod or up to 60mm <sup>2</sup> copper cable
Length:	300mm
Weight:	0.80kg

### Notes:

- Not Suitable for cutting steel wire and armoured cable

## L71200SC - Heavy duty wire rope cutter with long handles



Crimping Range:	14mm Ø steel rope or 9mm steel rod or up to 200mm <sup>2</sup> copper cable
Length:	600mm
Weight:	1.70kg

### Notes:

- Not Suitable for cutting steel wire and armoured cable

## L71400SC - Energy saving heavy duty wire rope and cable cutter with long handles



Cutting Range:	16mm Ø steel rope or up to 200mm <sup>2</sup> copper cable
Length:	780mm
Weight:	3.2kg

### Notes:

- Suitable for cutting steel wire, armoured cable and steel rope

