

**POWERLOCK Short tapes**



STHT33238-8	Tape Powerlock 3m x 13mm
STHT33194-8	Tape Powerlock 5m x 19mm
STHT33168-8	Tape Powerlock 8m x 25mm
33-448	Tape Powerlock 10m x 23mm

**Features:**

- Compact case - easier to hold & Belt clip for ease of storage
- Tru zero end hook moves to compensate for accurate inside and outside measurements
- Mylar® coated 19mm blade is up to 10 times more resistant to abrasion
- Highly resistant chrome plated metal case
- Class II, Ribbon-blocking button

**TYLON short tapes**



STHT30687-8	Tape Tylon 3m x 13mm
STHT30697-8	Tape Tylon 5m x 19mm
STHT30657-8	Tape Tylon 8m 25mm

**Features:**

- Tylon coated blade provides anti-glare reading
- Soft touch case
- Tru-Zero hook for accurate inside and outside measurements

**SHORT TAPES**



STHT3027-8	Tape Basic short 3m x 13mm
STHT30279-8	Tape Basic short 5m x 19mm

**Closed-case fibreglass blade long tape**



STHT34260-8	Tape Fibreglass C/Case 15m
STHT34296-8	Tape Fibreglass C/Case 20m - 6
STHT34297-8	Tape Fibreglass C/Case 30m - 6
STHT34298-8	Tape Fibreglass C/Case 50m - 6

**Features:**

- High-impact case for durability
- Reinforced fibreglass blade for accurate measurements
- High visibility case make it easy to detect on the job site

**Classic box-beam levels**



STHT43102-8	Level Classic - Box 400mm
STHT43103-8	Level Classic - Box 600mm
STHT43104-8	Level Classic - Box 800mm
STHT43105-8	Level Classic - Box 1000mm

**Features:**

- Equipped with 2, 3 or 4 unbreakable vials depending on length
- Easy to clean epoxy finish for long life
- Solid block vials guaranteed against breakage and leakage for 5 years
- Ribbed tubular box section aluminium body for strength and rigidity
- Machined on bottom surface for maximum accuracy (up to 1200mm level)
- Supporting sides milled up to 1200mm and treated with epoxy for easy cleaning

**Foam-cast levels**

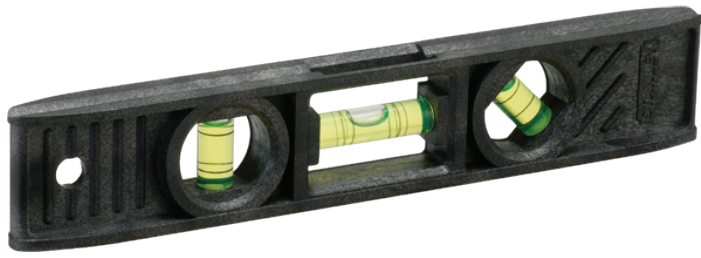


1-42-474	Level Foamcast 300mm
1-42-475	Level Foamcast 450mm
1-42-476	Level Foamcast 600mm
1-42-471	Level Foamcast 1200mm

**Features:**

- I-beam profile
- Injection moulded ABS body, lightweight and shock resistant
- 3 high visibility tubular vials: level, plumb and 45°
- Convenient metric graduation on top face
- Accuracy ± 2 mm/m
- Robust and non-deformable

ABS magnetic AMS torpedo level



STHT42264-8	Torpedo level 228mm 3 vial
-------------	----------------------------

Features:

- 3 tubular vials: 1 level, 1 plumb and a 45° vial
- Lightweight injection moulded ABS body for strength
- 200mm, 3 vials
- Available in non magnetic and magnetic

ABS ABS torpedo level

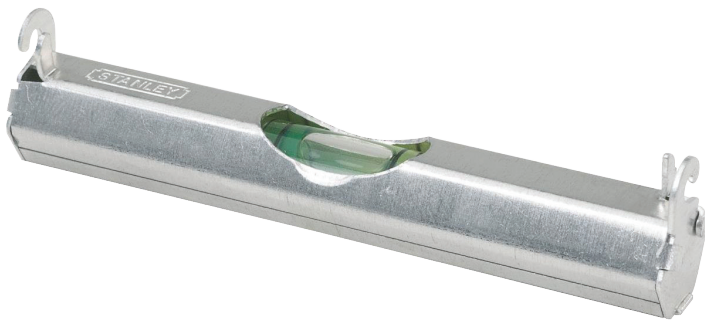


0-42-294	Level Torpedo ABS 203mm 3 Vial
----------	--------------------------------

Features:

- High visibility from above because of top-reading vial
- High-impact ABS body to provide durability
- Tinted 360° vials make measurements easy on the eyes
- Tinted 360° vials to provide distinct readability
- Top-reading feature allows visibility from above

Line levels



42-287	Level Line 83mm Alum
--------	----------------------

Features:

- Aluminum construction is lightweight and durable with flat base for surface leveling.
- Special hang hooks grip line which enables level to slide freely for positioning
- 360 degree vial for easy readability.
- Hexagon shape

Chalk Lines



STHT47443-8	1	Chalk Line Reel Set ABS 30m
STHT47440-8	2	Chalk Line Reel ABS 30m
STHT47403-8	3	Chalk Line Refill 115g Blue
STHT47404-8	4	Chalk Line Refill 115g Red

Features:

- High impact ABS case for durability
- Sliding door for quick and easy refill
- Stainless steel end hook for added durability and rust prevention

Squares 501-A



E-46038	Square 501-A 200mm/8"-10
E-46039	Square 501-A 250mm/10"-10
E-46040	Square 501-A 300mm/12"-10

Features:

- Hard wearing
- High impact ABS for long life

Square prof steel



E-46530	Square prof steel 150mm/6"-6
E-46532	Square prof steel 200mm/8"-6
E-46534	Square prof steel 250mm/10"-6
E-46536	Square prof steel 300mm/12"-6

Features:

- Anti corrosion coating

**Square combination 300mm multiuse**



2-46-017 Square combination 300mm multiuse

**Features:**

- Lightweight and durable metal body with 3 machined faces for accuracy
- Easy to read, long lasting engraved blade with 360° vial for all round visibility
- Scriber fitting for accuracy & convenience
- Can be used as a try and mitre square, depth or height gauge and spirit level
- Synthetic heel for light weight
- Integrated flask
- Graduation in mm

**Square combination 300mm H/D STL-3**

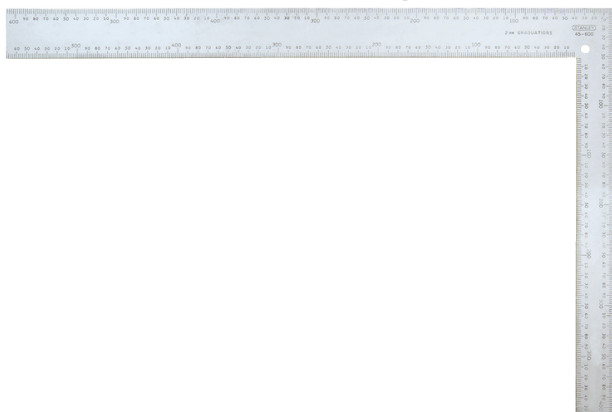


2-46-143 Square combination 300mm H/D STL -3

**Features:**

- Metric / imperial graduations
- High visibility reading etched and coated blade - rust resistant
- High quality brass nut and scriber fittings for long life
- 360° vial for all round visibility
- Can be used as a try and mitre square, depth or height gauge and spirit level
- Precision die cast body with 3 precision machined faces for accuracy

**Square Builders/roofing**



1-45-530 Square builders/roofing 600x400mm

**Features:**

- Face graduated every 2mm, reverse of blade every 1/8" th for detailed work
- Reverse reading scale and crisply embossed graduations for easy reading
- Steel square with buffed finish and protective lacquer coating for rust resistance



**Laser Level**

STHT1-77340	Cubix Cross-Line lasers
Levelling Type	Self
Accuracy	+/- 0.8mm@1m
Compensation Range	+/- 4°
Working Range	8m
Battery Life	20 hrs
Battery Type	2 x AA (1.5V)
Beam Colour	Red
Number of Lines	2
Line Direction	Vertical & Horizontal
Laser Class	Class 1
Laser Diode	635nm
Manual Mode	Yes



**Features:**

- Quicklink™ bracket system supplied
- Integrated slots in housing for quick connection to accessory bracket
- Visual warning / indication for "out of level" when in "self leveling mode"
- Single laser diode split with lens
- Self leveling cross line laser
- Can also be flipped on his back for ceiling application use

**10-189C - Spring-back retractable knife**



**Features:**

- Blade storage inside the handle
- Contoured handle with diagonal ribs for slip-resistant grip
- Zinc alloy body, very strong but lightweight
- The blade remains extended as long as the thumb is kept on the push button.
- Blade retracts automatically when the button is released
- Supplied with special round nose heavy duty blade for ultimate safety
- Safety knife with auto retracting blade
- Interlock nose locking system for greater safety during cutting
- Blade Extension 17 mm

**0-10-088 - Light weight retractable knife**



**Features:**

- No tools required to change the blade for quicker blade change
- Antishock resistant ABS body both lightweight and extremely strong
- Metal blade carrier carriage
- Fine adjustment allows 5 blade positions
- Rapid blade changing
- Knife with retractable blade

**10-810 - Quickslide pocket retractable utility knife**



**Features:**

- One handed operation blade slider – extends the blade easily and quickly
- Metal belt clip for convenient storage
- Push down and slide safety feature – ensures the blade is not accidentally extended
- All metal construction – solid, reliable and long lasting
- Pocket size for convenience

**9-10-813 - Quickslide sport utility knife**



**Features:**

- Zinc blade slider for durability and strength
- No tools needed to change utility blade – quick and easy to replace blades
- Interlock mechanism allows only one blade to be extended at any one time - for safety
- Thumb slider - for easy operation of utility blade
- Positive spine lock fixes blade when opened - for safe operation
- Separate traditional utility blade ideal for professional heavy duty cutting
- 3" / 75mm serrated blade for garden, hobby, and outdoor use
- Comes with holster and blades for better value

**STHT10266-8 - Professional TP snap-off blade knife - 9mm**

**STHT10264-8 - Professional TP snap-off blade knife - 18mm**



**Features:**

- Bi-material TPR handle with soft grip or full ABS version for durability
- Dial lock or auto slide lock for convenience and safety
- Ergonomic design of thumb pad & neck down create comfortable grip & control
- Fits application needs from light to heavy duty and specially designed to improve cutting performance
- Removable blade snapper in the knife cap
- Storage of spare blades

**2-10-199 - Classis 199 fixed blade utility knife**



**Features:**

- Over lapping nose blade locking system for greater safety during cutting
- Strong zinc alloy body with a grooved surface for comfortable, assured grip
- Blade holder inside the handle for safe storage
- Knife supplied with 3 blades

**0-10-480 - Dynagrip cartridge snap-off blade knife - 18mm**

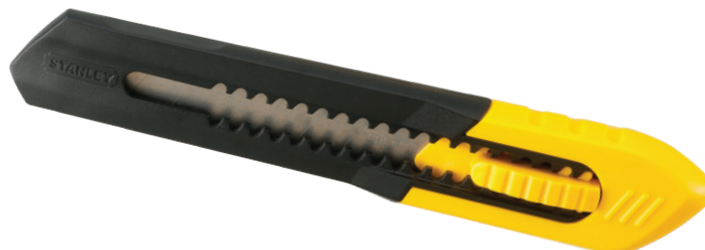


**Features:**

- Click action slider indicates when new blade auto feeds into position
- Storage for up to 6 blades

**STHT10151-8 - Quick-point snap-off blade knife - 9mm**

**STHT10150-8 - Quick-point snap-off blade knife - 18mm**



**Features:**

- Blade snapper included in handle for safety
- Multi-position push button for quick, easy use
- Two part moulded body that allows rapid blade changing.

**Knife blades**



11-931	Extra Heavy Duty Knife Blades - 5 Pack
11-931A	Extra Heavy Duty Knife Blades - 10 Pack
0-11-911	1992 Trimming Knife Blades - 5 Pack
1-11-916	1992 Trimming Knife Blades - 20 Pack
1-11-911	1992 Trimming Knife Blades - 100 Pack
11-921T	1992 Trimming Knife Blades - 10 Pack Heavy Duty

**Features:**

- Ideal for carpet, vinyl & any other material requiring a stiffer & stronger blade
- The original and best heavy duty, general purpose blade - 0.65mm thick
- 2 cutting positions for a variety of applications, 2 point reversible blade
- Hardened & tempered utility blade for high sharpness & long life
- Blades fit all standard Stanley knives

**1992 Trimming knife blades**



0-11-911	1992 Trimming Knife Blades - 5 Pack
1-11-916	1992 Trimming Knife Blades - 20 Pack
1-11-911	1992 Trimming Knife Blades - 100 Pack
11-921T	1992 Trimming Knife Blades - 10 Pack Heavy Duty
0-11-921	1992 Trimming Knife Blades - 5 Pack Heavy Duty
1992-20	1992 Trimming Knife Blades - 20 Pack Heavy Duty
1-11-921	1992 Trimming Knife Blades - 100 Pack Heavy Duty
4-11-921	Heavy duty 400 pack

**Features:**

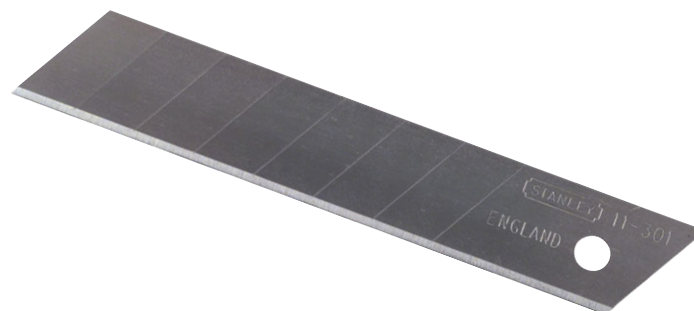
- Ideal for carpet, vinyl and any other material requiring a stiffer and stronger blade
- The original and best heavy duty, general purpose blade - 0.65mm thick
- Can be supplied as 5 units on a card, 10 units in a dispenser or 100 units in bulk
- 2 cutting positions for a variety of applications
- 2 point reversible blade
- Hardened and tempered utility blade for high sharpness and long life
- Blades fit all standard Stanley knives

**Quick-point snap-off blades**

0-11-300	Quick-point Snap-off Blades - 9mm 10 Pack
0-11-301	Quick-point Snap-off Blades - 18mm 10 Pack

**Features:**

- Replacement blade dispenser with blade breaker system and storage of used segments
- 0.55mm reinforced thickness - for everyday general PRO use



**STHT65199-8 - Cushion grip screwdriver set - Magnetic tip - 4PC**



- Features:**
- Phillips® PH1 x 100mm
  - Phillips® PH2 x 150mm
  - Slotted 6.5mm x 150mm
  - Std Parallel 5mm x 100mm

**0-65-242 - Cushion grip screwdriver set - Magnetic tip- 6PC**



- Features:**
- Chrome plated blade ensuring resistance to corrosion
  - Soft grip handle for excellent comfort and control
  - Tip identification for easy choice of correct screwdriver

**0-65-011 - Cushion grip screwdriver set - Magnetic tip - 8PC**



- Features:**
- Soft grip handle for excellent comfort and control
  - High grade steel bar reducing the risk of tip breakage
  - Chrome plated bar ensuring resistance to corrosion
  - Large diameter handle which offers great torque needed for driving wood screws
  - Tip identification for easy choice of the correct screwdriver for each screw type
  - Nickel plated bar protects from rusting
  - Shot blasted magnetic tips ensure a stronger screw pick up

**0-68-010 - Ratcheting screwdriver & Multibit set - 10PC**



- Features:**
- Delivered with 10 x 1/4" hex tips
  - Pawl mechanism with three positions (right, left, fixed)
  - Patented bit storage in handle and cap for ease of visibility, access and security
  - Ball bearing system with spring mechanism to facilitate access to the tips
  - 3 Position ratchet mechanism
  - Rust-proof chrome blade
  - Tri lobular handle, bimaterial handle for torque and easy grip
  - Parallel 5,6mm. Phillips n°1, 2. Pozi 1,2. Torx T10, T15. Square n°1, 2.

**0-66-357 - Stubby screwdriver & Multibit set - 6PC**



- Features:**
- Magnetic tip
  - Twist off cap
  - Durable ABS plastic
  - Internal bit storage

**66-052 - Precision screwdriver set - 6PC**



- Features:**
- Slotted: 14; 2.0; 2.4; 3 Phillips: PH0; PH1
  - Plastic storage case to easily index the products
  - Tough plastic shafts and soft cushion grip allows for greater comfort
  - Attractive bi-material handles designed for easy and comfortable grip
  - Chrome vanadium steel parts in black oxide finished with hardened tips - HRC 53

**4-69-261** - Folding HEX key set - 7PC 1.5mm - 6mm Metric



**Features:**

- Finish : Black Phosphate
- All keys stored in a size marked order for ease of access
- Silicium steel
- All keys stored in a size marked plastic holder
- 1.5 - 2 - 2.5 - 3 - 4 - 5 - 6 mm

**4-69-262** - Folding HEX key set - 7PC 1.5mm - 10mm Metric



**Features:**

- Finish : Black Phosphate
- All keys stored in a size marked order for ease of access
- Silicium steel
- All keys stored in a size marked plastic holder
- 2.5-3-4-5-6-8-10mm

**4-69-263** - Folding TORX key set - 8PC T9 - T40



**Features:**

- Finish : Black Phosphate
- All keys stored in a size marked order for ease of access
- Finish: burnished
- Silicium steel
- 8 piece Torx configured tips made from high tensile steel
- 9-10-15-20-25-27-30-40

**0-69-257** - Clipcase HEX key set - 12PC 1.5mm - 12mm Metric



**Features:**

- Standard hex keys in high tensile steel for long life
- 1/16, 5/64, 3/32, 7/64, 3/8, 9/64, 5/32, 3/16, 7/32, 1/4, 5/16"

**15-166** - Pro steel frame hacksaw 450mm



**Features:**

- Positive locking mechanism
- Two blade position 90°/55°
- Aluminium handle - 12" blades

**E-15200** - Adjustable chrome-frame hacksaw



**Features:**

- Adjustable rigid steel frame
- Plastic handle for comfort
- Chrome plated

**E-20206 - Fixed Hacksaw**



**Features:**

- Full grip protects knuckles
- Sturdy, all steel pointed frame

**STHT20807-8 - Mini-Hack utility saw - heavy duty**



**Features:**

- Durable solid aluminum construction
- Ideal for hard-to-reach places
- 10" blades

**0-20-807 - Mini-Hack utility saw - standard duty**



**Features:**

- Allows the use of truncated sections of blade
- Fine adjustment of the blade length gives greater range of applications
- Ergonomically designed grip with thumb rest for maximum comfort
- Back blade stop for safe handling and use
- 35mm cutting capacity
- Metal mini saw ideal for small areas with limited access

**0-15-218 - Junior hacksaw - plastic handle**



**Features:**

- Moulded handle - lightweight and strong
- Lever incorporated in the handle allowing a rapid change in the blade
- Rapid hardened steel blade for improved cutting efficiency
- Quick release hacksaw features a lever moulded into grip handle for easy blade change
- Deep throat for good work capacity
- Square rigid tube mounting for strength

**0-20-092 - 3-in-1 Utility saw set**



**Features:**

- Multi-Purpose 3-in-1 Saw Set offers end users the functionality of 3 different blades in one space saving design – universal pull saw blade, metal saw blade and compass saw blade
- The diamond pattern and rubber over-molding on the handle allows end users to use the 3 in 1 Saw with reduced grip slip
- The main blade utilizes a Pull Saw tooth configuration which is less likely to jam or bend while in use
- The turn knob allows the user to conveniently store all three blades, switch blades, and tilt each blade into 6 different positions
- 250mm / 10" aggressive tooth 11 teeth per inch universal wood saw blade cuts on the "pull" stroke – perfect for general woodworking and pruning
- 200mm / 8" compass saw blade 9 teeth per inch for more detailed work
- 150mm / 6" metal hacksaw blade 24 teeth per inch for cutting metal pipes and rods



**Saw blade**



0-15-842	Saw Blade 300mm 24 Teeth
15-928A	Saw Blade 300mm 18 Teeth

**Features:**

- Good value for general use
- High carbon steel blades cut mild steel, cast-iron, aluminum, copper
- Points per Inch 19
- Teeth per inch 18
- Blade Length 300mm

**3-15-905 - Junior saw blade - 5PC**



**Features:**

- Spare Blade for 0-15-218 and 0-15-405
- 5 blades

**Graphite claw hammer**



1-51-505	Graphite Claw Hammer - 450g
1-51-507	Graphite Claw Hammer - 540g

**Features:**

- Comfortable slip resistant grip
- Vibration dampener through the combination of a flexible elastomer coating and a graphite core
- Handle cannot be removed thanks to its exclusive unbreakable head-handle link, flat head and sharp angles
- Full length graphite core shaft for maximum strength and balance
- 5 times fewer vibrations than a wooden handle
- Fully heat treated and rim tempered striking face for strength and safety

**Tubular steel handle claw hammer**



STHT51081-8	Tubular Steel Handle - 450g
STHT51082-8	Tubular Steel Handle - 570g

**Features:**

- Flock-filled rubber grip for comfort and durability
- Hardened and tempered tubular steel shaft for strength
- Shaft 15% longer for better balance & control in usage

**Ballpein hammer - Hickory wood handle**



STHT54189-8	Ball Pein Hammer - Hickory Wood - 383g
STHT54190-8	Ball Pein Hammer - Hickory Wood - 480g
STHT54191-8	Ball Pein Hammer - Hickory Wood - 618g
54-193	Ball Pein Hammer - Hickory Wood - 910g

**Features:**

- Ball end used for riveting and poll used for normal striking
- Handle 25% longer in 16-32oz sizes for better balance and control
- Meets ANSI standards
- The hammer head is attached with 2 wedges for better durability

**Hickory wood handle claw hammer**



STHT51271-8	Hickory Wood Handle - 450g
STHT51274-8	Hickory Wood Handle - 570g

**Features:**

- Forged high-carbon steel head provides durability
- Fully heat-treated and polished bell face
- Light weight wooden handle

**Club hammer - Hickory wood handle**



57-554	Club Hammer - Hickory Wood Handle - 1000g
--------	---

**Features:**

- Black epoxy head with polished convex faces
- Securely fitted, moisture sealed hickory shaft

**Rubber mallet - Hickory wood handle**



STHT57528-8	Rubber Mallet - Hickory Wood Handle - 610g
-------------	--

**Features:**

- Rubber head helps minimize marring and surface damage
- Tough rubber head molded to a wood handle

**Pry bars- Wonder Bar pry bar**



55-515:	Wonder bar pry bar
---------	--------------------

**Features:**

- Forged, high carbon steel for increased steel and durability
- Contoured bar makes pulling nails, prying and lifting easier
- Polished and beveled cutting edges
- Polished tips and bevelled nail slots – excellent for pulling nails, lifting or prying
- High visibility, powder coated finish
- Heat treated, forged high carbon steel for increased durability



**4-84-489 - Maxsteel VDE plier set - 4 PC**

**Features:**

- Interlocking joint assembly for smooth cutting
- Hand ground, induction hardened blade for long life and accuracy
- Heat treated high chrome steel forging for long life and durability
- Bi-material handle with secure grip grooving
- 1000V rated handle
- DIN/ASO/ANSI compliant, EN60900, IEC/CEI900, VDE0693
- Safe live line working to 1,000 V
- Individually tested to 10,000v
- Combination pliers - 165 mm, Half round long nose pliers - 160 mm, Diagonal copper wire cutting pliers - 175 mm & Wire stripper - 170 mm



**0-84-002 - VDE combination plier - 200mm**



**Features:**

- Safe live line working to 1,000v
- 1000V rated handle
- Bi-material handle with secure grip grooving
- Heat treated high chrome steel forging for long life and durability
- Hand ground, induction hardened blade for long life and accuracy
- Interlocking joint assembly for smooth cutting
- Individually tested to 10,000v
- Compliant to EN60900, IEC/CEI900, VDE0680

**0-84-004 - VDE Diagonal plier - 195mm**



**Features:**

- Safe live line working to 1,000v
- 1000V rated handle
- Bi-material handle with secure grip grooving
- Heat treated high chrome steel forging for long life and durability
- Hand ground, induction hardened blade for long life and accuracy
- Interlocking joint assembly for smooth cutting
- Individually tested to 10,000v
- Compliant to EN60900, IEC/CEI900, VDE0683

**0-84-007 - VDE long nose pliers - 210mm**



**Features:**

- Bi-material handle with secure grip grooving
- Hand ground, induction hardened blade for long life and accuracy
- Heat treated high chrome steel forging for long life and durability
- Individually tested to 10,000v
- Interlocking joint assembly for smooth cutting

Long nose pliers



0-84-053	Long Nose - 150mm
0-84-625	Long Nose - 200mm

Features:

- Close fit machined jaws for efficient cutting
- Induction hardened and tempered metal for longer performance
- Bi-material handles for comfort and grip even with oily hands
- Brushed steel finish
- Forged carbon steel jaws and handle for long life

Diagonal cutters



0-84-054	Diagonal Cutters - 150mm
0-84-622	Diagonal Cutters - 200mm

Features:

- Close fit machined jaws for efficient cutting
- Induction hardened and tempered metal for longer performance
- Bi-material handles for comfort and grip even with oily hands
- Brushed steel finish
- Forged carbon steel jaws and handle for long life

Combination plier



0-84-055	Combination Plier - 150mm
0-84-056	Combination Plier - 180mm
0-84-623	Combination Plier - 200mm
84-154	Combination Plier - 228mm

Features:

- Forged carbon steel jaws and handle for long life
- Close fit machined jaws for efficient cutting
- Induction hardened and tempered metal for longer performance
- Bi-material handles for comfort and grip even with oily hands
- Brushed steel finish
- Two-position, adjustable joint pliers used for grasping & turning

Plier set dyna grip bi-material - 3PC

STHT73655-8	Plier Set Dyna Grip Bi-material - 3PC
-------------	---------------------------------------

Features:

- 6" Diagonal Cutting Pliers
- 6" Long Nose Pliers
- 7" Combination Pliers



### Basic mini pliers - Needle nose



STHT84096-8	Basic Mini Plier - Needle Nose - 125mm
-------------	--

**Features:**

- Double dipped handle allows for a comfortable grip
- Drop-forged steel is strong and durable
- Forged carbon steel jaws fully heat treated for optimum performance and durability

### Basic mini pliers - Long nose



STHT84119-8	Basic Mini Plier - Long Nose - 100mm
-------------	--------------------------------------

**Features:**

- Double dipped handle allows for a comfortable grip
- Drop-forged steel is strong and durable
- Forged carbon steel jaws fully heat treated for optimum performance and durability

### Basic mini plier - Diagonal cutter



STHT84124-8	Basic Mini Plier Diagonal Cutter - 100mm
-------------	--

**Features:**

- Double dipped handle allows for a comfortable grip
- Drop-forged steel is strong and durable
- Forged carbon steel jaws fully heat treated for optimum performance and durability
- Meets ANSI specifications

### Basic diagonal cutting pliers



STHT84104-8	Basic Diagonal Cutting Plier - 125mm
STHT84105-8	Basic Diagonal Cutting Plier - 150mm
STHT84108-8	Basic Diagonal Cutting Plier - 180mm

**Features:**

- Double dipped handle allows for a comfortable grip
- Drop-forged steel is strong and durable
- Forged carbon steel jaws fully heat treated for optimum performance and durability
- Meets ANSI specifications

### Basic linesman combination pliers



STHT84112-8	Basic Linesman Combination Plier - 180mm
STHT84113-8	Basic Linesman Combination Plier - 200mm

**Features:**

- Double dipped handle allows for a comfortable grip
- Drop-forged steel is strong and durable
- Forged carbon steel jaws fully heat treated for optimum performance and durability

### Basic long nose pliers



STHT84096-8	Basic Long Nose Plier - 125mm
STHT84101-8	Basic Long Nose Plier - 152mm
STHT84102-8	Basic Long Nose Plier - 200mm

**Features:**

- Double dipped handle allows for a comfortable grip
- Drop-forged steel is strong and durable
- Forged carbon steel jaws fully heat treated for optimum performance and durability

**Basic groove joint pliers**



0-84-110	Basic Groove Joint Plier - 250mm
84-111	Basic Groove Joint Plier - 300mm

**Features:**

- Heat treated carbon steel forging for long life
- Ground heat treated cutting edges for longer life, durability and accuracy
- Comfort grip handles
- Polished heads
- Multiple jaw positions

**Lock jaw pliers - Curved jaw**

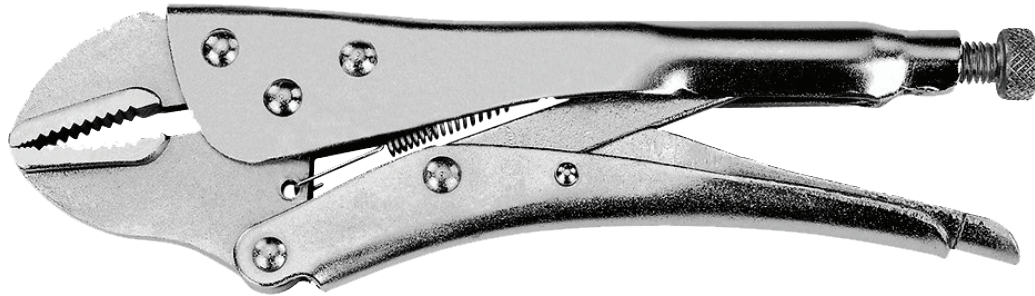


84-368	Lock Jaw Plier - 178mm Curved Jaw
84-369	Lock Jaw Plier - 254mm Curved Jaw

**Features:**

- Curved jaws puts tremendous pressure on 4 points at any style or bolt
- Heat-treated adjustable screw
- Ideal for precision work
- Serrated jaws made of chrome molybdenum material

**Lock jaw pliers - Straight jaw**



84-370	Lock Jaw Plier - 178mm Straight Jaw
84-371	Lock Jaw Plier - 254mm Straight Jaw

**Features:**

- Heat-treated adjustable screw
- Ideal for precision work
- Serrated jaws made of chrome molybdenum material

**0-84-519 - Multitool 12 - in - 1 set**



**Features:**

- Length when open: 165mm
- Supplied with a STANLEY branded pouch including belt clip
- Easy access to tools
- Ergonomic handle with attractive polished finish
- Stainless steel construction for long life
- Length when bent: 105mm

**STHT0-70648 - Multitool - mini set**



**Features:**

- Hardened and tempered tools for long life
- Modern slick polished look
- Combination pliers - saw - Knife - flathead screwdriver "Phillips" - a flathead screwdriver 3 mm - can opener, file
- An ideal tool for everyday use
- Dimensions folded only 75x32x17mm
- Weight: 78 g
- Saw, Knife, Phillips 1mm & 3mm Slotted Screwdriver, Can Opener, File, \*Combination Pliers

### Maxsteel bench vices

1-83-066	Maxsteel Bench Vice 100mm
1-83-067	Maxsteel Bench Vice 120mm
1-83-068	Maxsteel Bench Vice 150mm

**Features:**

- Base bolts directly to work bench surface for stability
- Base swivels and locks for versatility
- Chrome-plated to resist corrosion



### 6-TR250 - Sharpshooter staple / Brad-nail gun



**Features:**

- Aluminium cast housing for greater durability
- Lock down handle for easier storage
- Pinch point free design for added safety
- Easy push handle – easier to use
- Quick-view window simplifies staple identification
- Accepts heavy duty staples and brads for multiple applications
- Internal wire guide for greater accuracy
- Flush-nose design solves the problem of stapling in tight spots
- Easy access staple & brad insertion for faster loading
- Hi/Lo adjustment to match density of materials

### 6-TR45 - Staple gun - light duty



**Features:**

- Lightweight with convenient handle lock for safe storage
- Quick-jam-clear mechanism saves time and hassles
- Chrome-plated steel construction for durability
- Takes light duty staples
- Easy access staple insertion for fast loading
- Lock down handle for easier storage
- Cutcase packaging

### Light duty staples

1-TRA206T	Light Duty Staples - 6mm x 1000
1-TRA204T	Light Duty Staples - 8mm x 1000
1-TRA205T	Light Duty Staples - 10mm x 1000

**Features:**

- Light duty
- 4mm, 6mm, 8mm, 10mm, 12mm, 14mm



### Heavy duty staples

1-TRA704T	Heavy Duty Staples - 6mm x 1000
1-TRA705T	Heavy Duty Staples - 8mm x 1000
1-TRA706T	Heavy Duty Staples - 10mm x 1000
1-TRA708T	Heavy Duty Staples - 12mm x 1000
1-TRA709T	Heavy Duty Staples - 14mm x 1000

**Features:**

- Heavy duty
- 6mm, 8mm, 10mm, 12mm, 14mm



### Brad nails

1-SWK-BN050T	Brad Nails - 12mm x 1000
1-SWK-BN625T	Brad Nails - 16mm x 1000

**Features:**

- Fit most 18 GA Brad Nailers



**GR100ZA - Dualmelt pro glue gun kit - 80W**



**Features:**

- Delivers industrial performance with consumer appeal
- Exclusive auto shutoff light ensures safety, reliability and extended life
- Dual heater provides outstanding glue output
- Temperature switch for both high- and low-temperature glue applications
- On/off light and protected nozzle for added safety
- Cushion grip for comfortable, slip-resistant trigger action
- Interchangeable nozzle capability
- Fold-out stand for safe, handy storage while in use

**69-665 - Glue gun - heavy duty - 40W**



**Features:**

- Delivers industrial performance with consumer appeal
- Exclusive auto shutoff light ensures safety, reliability and extended life
- Dual heater provides outstanding glue output
- Temperature switch for both high- and low-temperature glue applications
- On/off light and protected nozzle for added safety
- Cushion grip for comfortable, slip-resistant trigger action
- Interchangeable nozzle capability
- Fold-out stand for safe, handy storage while in use

**69-028 - Mini glue gun - 12W**



**Features:**

- Trigger feed
- Sleek ergonomic design
- Built-in stand
- Uses mini hot melt or dual temperature glue
- Small, portable size for quick gluing jobs in tight spots
- Trigger-feed mechanism controls glue flow
- Uses standard .28" mini hot melt sticks
- Fold-out stand for handy storage while in use

**Glue Sticks**



1-GS10DT	Glue Sticks - Mini Dual Temp - 24PC
GS230S	Glue Sticks - All Purpose - 100mm 6PC
GS260	Glue Sticks - Wood working - 100mm 6PC
GS300	Glue Sticks - All Purpose - 11.2 x 300mm 1kg
GS500	Glue Sticks - FOrmula Super Srength - 6 PC



**STHT69646-8 - Hand riveters light duty**



**Features:**

- Long handle makes riveter easy to squeeze
- Slim-nose design fits in difficult-to-reach places
- Spring-loaded handle ejects rivet stem automatically

**STHT69800-8 - Hand riveters heavy duty**



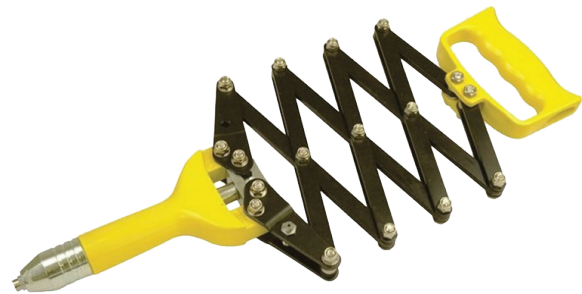
**Features:**

- 4 nose pieces & wrench store in handle for versatility and convenient storage
- Longer handle for ease of squeeze
- Heavy duty, long lasting
- Accepts aluminium & steel rivets for a wide range of applications

**69-800SA - Heavy duty riveters contra-pull**

**Features:**

- Blade storage for convenience
- Instant blade change for speed of use
- Ergonomic, rugged design for heavy duty use



**Pipe wrench**



87-622	Pipe Wrench - 241mm
87-623	Pipe Wrench - 295mm
87-624	Pipe Wrench - 330mm
87-625	Pipe Wrench - 408mm
87-626	Pipe Wrench - 550mm

**Features:**

- Cast iron body
- Knurled large carbon steel nut
- Jaw forged in Chrome Molybdenum steel
- Construction in double "T" for greater resistance and durability
- Two way toothing and spring loaded jaw provides positive grip

**1-77-174 - Odometer (counter measuring wheel) 5 digit**

**Features:**

- 5 digit counter with manual reset button for superb accuracy
- Die cast Aluminium wheel with wear resistant rubber tread for improved traction & longer life
- Folding Kick stand
- Folding wheel mount
- Gear driven counter with tough plastic housing for long life
- Heavy Duty metal folding handle & rubber hand grip for maximum durability



**Soldering iron**

69-031B-ZA	Soldering Iron - 30W
69-033B-ZA	Soldering Iron - 40W

**Features:**

- Shot blasted tips ensure improved torque and corrosion protection
- Smooth domed end for fast spinning action – speed and comfort
- Colour coded ends make it easy to identify the correct screwdriver for each screw type

